

R.P.O. Vol. 57
C.T. Vol. 1275

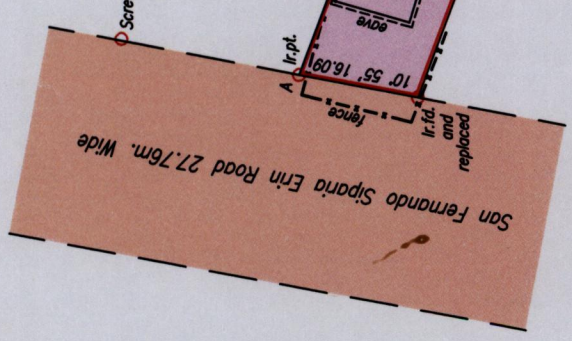
Fol. 497
Fol. 165

Process ID # 42938

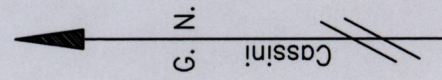
Cadastral Sheet G.13.B. 6.3F
1/a

Ward of Naparima
County of Victoria

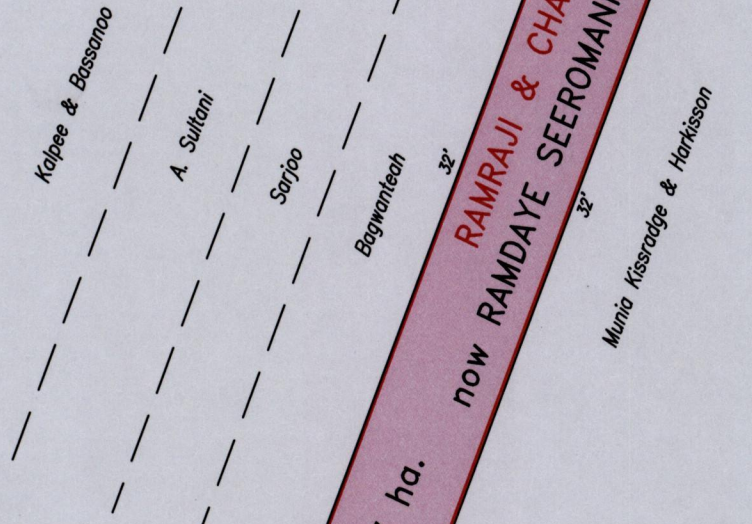
Reference :
Bk.909 Fol.140
Bk.940 Fol.68
Bk.389 Fol.56
Bk.716 Fol.292&293
Bk.1219 Fol.23



San Fernando Siparia Em Road 27.76m. Wide
Irr. pt. and replaced



Legend
A - Screw fd. 11' 10" 93.97 (N.T.S.)



0.4047 ha.

RAMRAJI & CHANDRABALLY MAHARAJ 0.4047 ha.
now RAMDAYE SEEROMANIE RAMNARINE & HARRY RAMNARINE

SCALE 1:1000
Distances are in metres

1126712 669834
Point "A" = N 1126529, E 669665
Coordinates obtained by Hand Held GPS.
U.T.M. 20, NAPARIMA (+/-5.0m.)

1395

1015

Approved *[Signature]*
Director of Surveys 2012.1.11

Bearings are based on solar Observations
PLAN of a Parcel of land coloured pink in the Ward of Naparima
Containing zero point four zero seven hectares
Surveyed by me, with due authority, in June 2011 for Ramdaye Seeromanie Ramnarine
In accordance with Regulation 25 (1) of the Land Surveyors' Regulations 1998,
I certify that this plan is correct.

Checked by *[Signature]* 9/11/2012
Entered on *[Signature]* Trinidad & Tobago Land Surveyor. 29th July 2011.