

1395

101

R.P.O. Vol. 485 Fol. 457

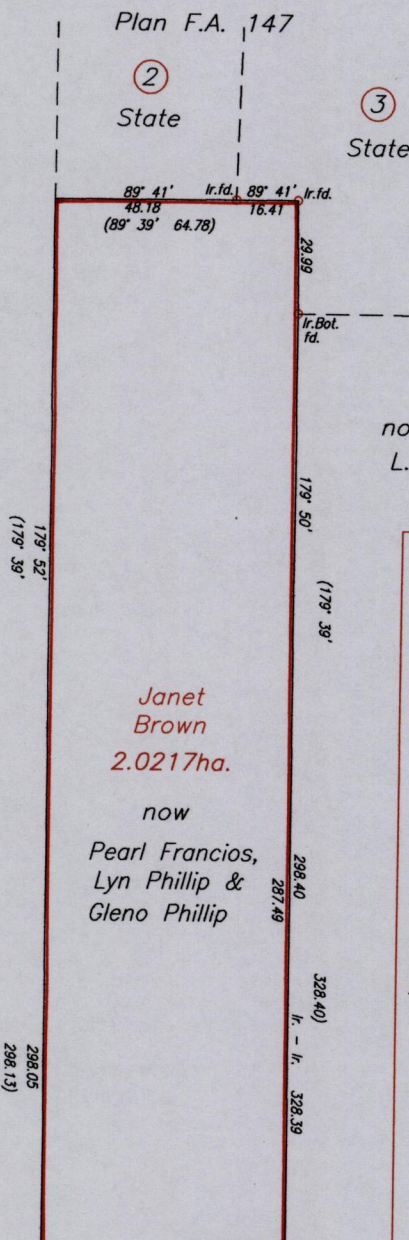
C.T. Vol. 4400 Fol. 383

Cadastral Sheet C.17.H. 16D

Ward of Matura 4/b

County of St Andrew

LP# T201 Toco Main Road,  
Matura

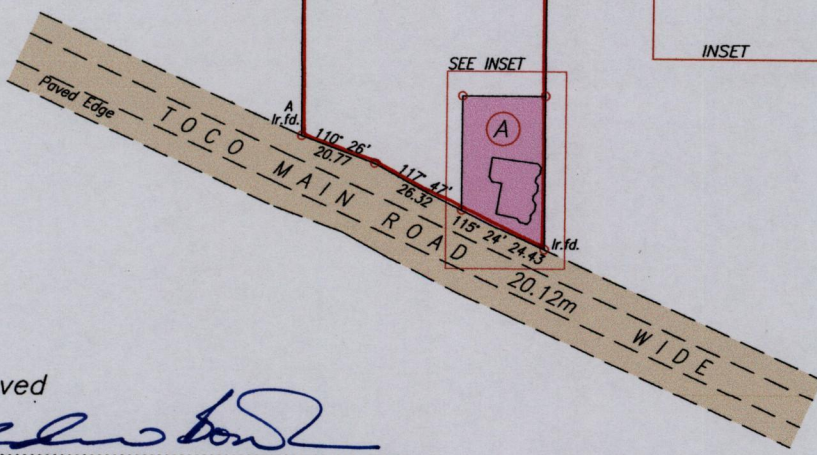
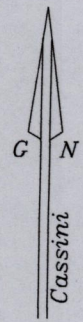
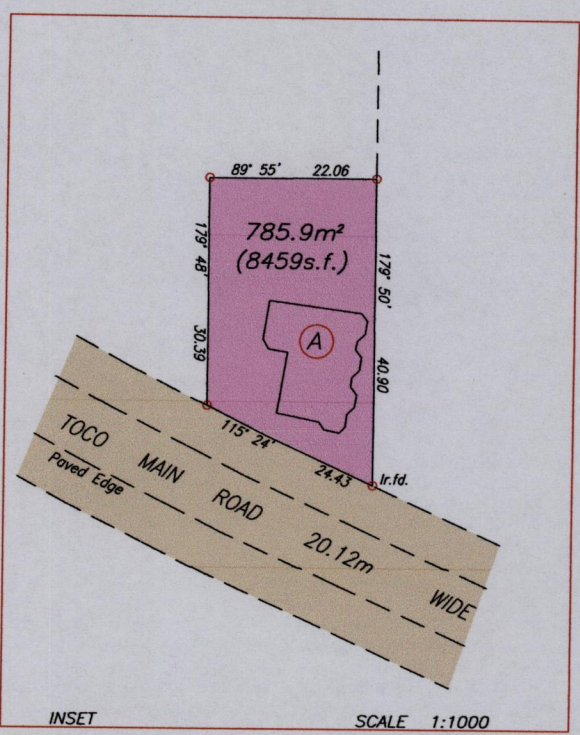


now or formerly  
L. E. Belford

State  
then  
Sookhoo

Janet  
Brown  
2.0217ha.

now  
Pearl Francois,  
Lyn Phillip &  
Gleno Phillip



U.T.M.	
A	N. 1179 194
	E. 0709 391
Nap. Datum ± 5.0 m	
Hand held G.P.S.	

Vide Plan F.A. 147

SCALE 1:2000

Distances are in Metres

Approved

Director of Surveys 2011.11.11

○ Denotes Iron Put unless otherwise stated  
 Bearings are Cassini Grid based on Solar Observations  
 Plan of a Parcel of land coloured pink in the Ward of Matura  
 Containing seven eight five point nine square metres  
 Surveyed by me, with due authority, May 2009 for Pearl Francois  
 In accordance with Regulation 25 (1) of the Land Surveyors' Regulations 1998,  
 I certify that this plan is correct.

Checked by M.M.C. 2/11/2011

Entered on .....

Trinidad & Tobago Land Surveyor 24<sup>th</sup> October 2011