

1395

1

Process JD# 41705

RPO Vol. 161 Fol. 457

CT. Vol. 4997 Fol. 81

Ward of Savana Grande

County of Victoria

Cadastral Sheet (G.15.B), 64E  
2/b

Coordinates

Ir.pt. I : N 1126576

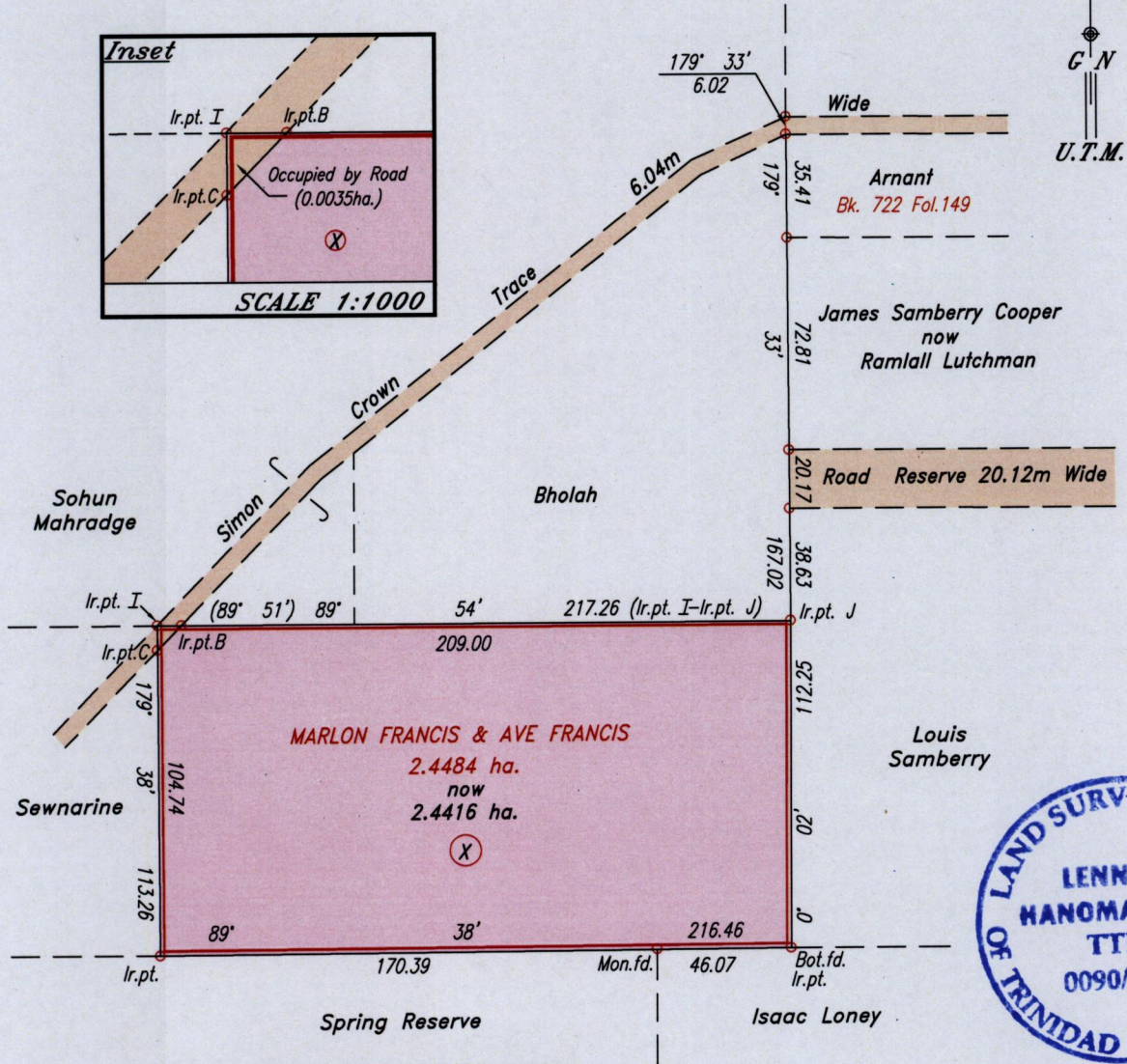
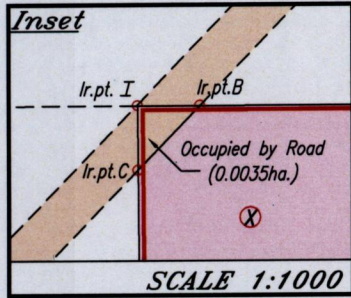
E 684495

Error Statement : ±4m

Datum Definition : U.T.M. Zone 20 Naparima

Source : Magellan Hand Held GPS

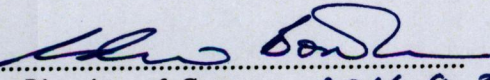
Parcel Address: Simon Crown Trace,  
St. Mary's Village,  
Moruga



Line	Bearing	Dist.
Ir.pt. I-B	89° 54'	8.25
Ir.pt. I-C	179° 38'	8.52
C-B	43° 50'	11.83



Ref: Bk. 353 Fol. 459

Approved:   
 Director of Surveys 2011.9.30

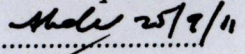
SCALE 1:2500

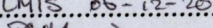
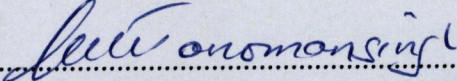
○ Denotes Iron found except otherwise stated.

Note: Bearings are U.T.M. grid based on solar observations. Distances are in metres.

Plan of a Parcel of land (X) coloured pink in the Ward of Savana Grande  
 Containing two point four four one six hectares  
 Surveyed by me, with due authority, in May 2011.

In accordance with Regulation 25(1) of the Land Surveyors' Regulations 1998,  
 I certify that this plan is correct.

Checked by:  25/9/11

Entered: CMIS 06-12-2012   
 Trinidad & Tobago Land Surveyor  19/09/2011