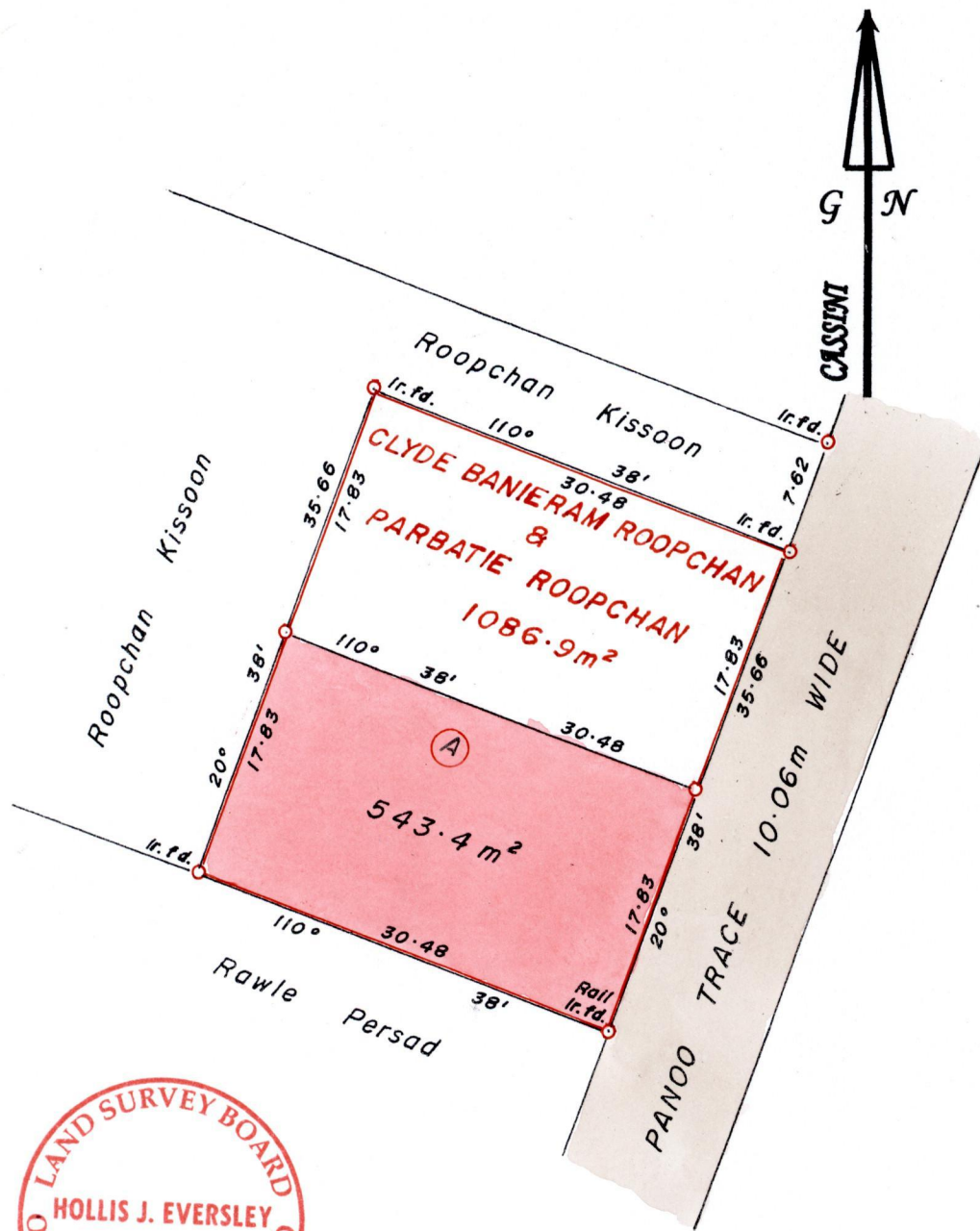


1336

93

R.P.O Vol. 91 Fol. 519
C.T. Vol. 3815 Fol. 111

Ward of Naparima.
County of Victoria.
Cadastral Sheet G.13.J. 63F
2/c



Bk. 1233:35

Approved.....
 Director of Surveys.
 2007-04-30

SCALE 1 : 500.

Distances are in METRES

○ Denotes Iron Pit except otherwise stated

Bearings are Cassini Grid based on Solar Observations.

PLAN of a Parcel of land coloured in PINK in the Ward of Naparima.
Containing five hundred and forty three point four square metres.
Surveyed by me, with due authority, in April 2006.
In accordance with Reg. 25(1) of the Land Surveyors' Regulations 1998,
I certify that this plan is correct.

Checked by
 Entered

Trinidad and Tobago Land Surveyor 2006.