

13836

82

R.P.O. Vol. 181 Fol. 169

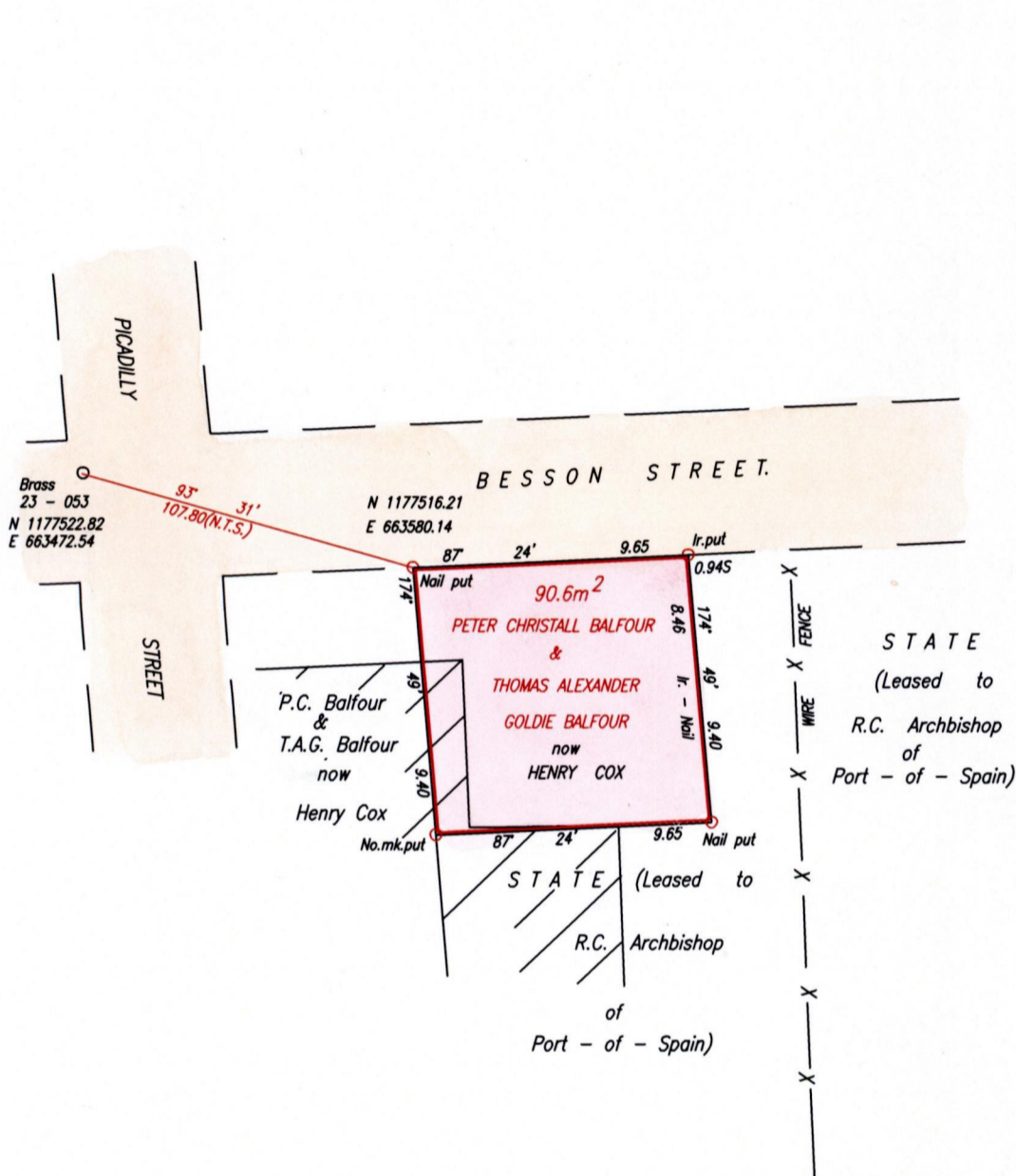
C.T. Vol. Fol.

Vide Bk. 67 fol 126  
Vide Bk. 765 fol 105

Cadastral Sheet A.20.K 23B  
1/a

City of Port - of - Spain

County of St. George



Approved *[Signature]*  
Director of Surveys  
2887-0417

○ Denotes Iron put except otherwise stated.  
Bearings are U.T.M. Grid based on Solar Observations.

SCALE 1:250  
Distances are in Metres

PLAN of a Parcel of land coloured pink in the City of Port - of - Spain  
Containing ninety point six square metres  
Redfined by me, with due authority, in November, 2006  
In accordance with Regulation 25(1) of the Land Surveyors' Regulations 1998,  
I certify that this plan is correct.

Checked by *[Signature]* *[Signature]*

Entered . . . . . Trinidad & Tobago Land Surveyor *[Signature]* 29<sup>th</sup> March . . . . . 2007

PATH = EV700 D:\Drawings06\mpu.dwg.

