

1386

63

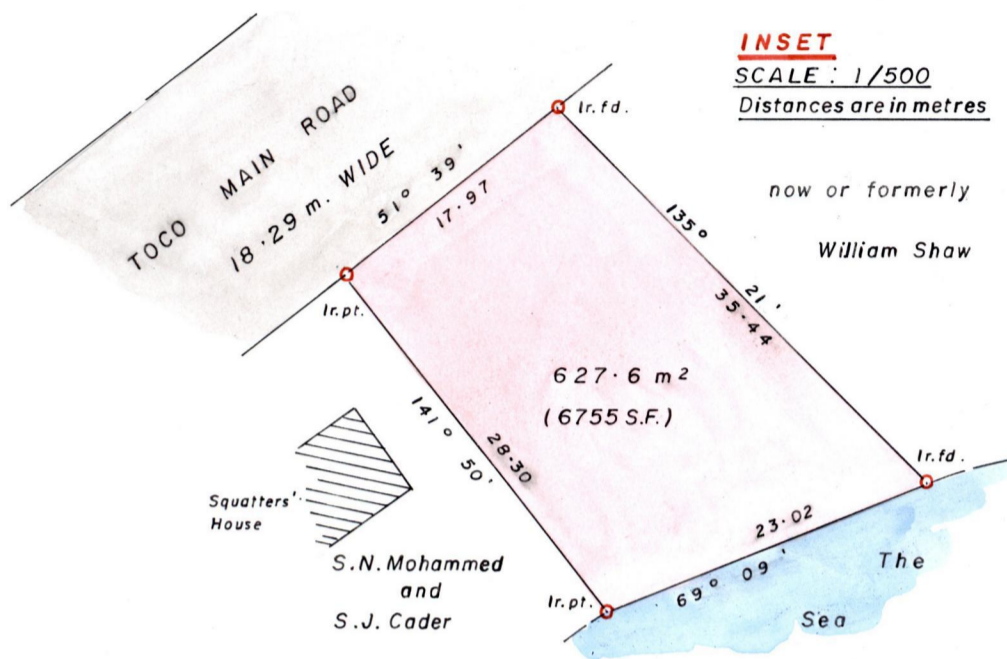
Cadastral Sheet C.9.L. $\frac{6F}{4/c \& 4/d}$

R.P.O Vol. 415 Fol. 617

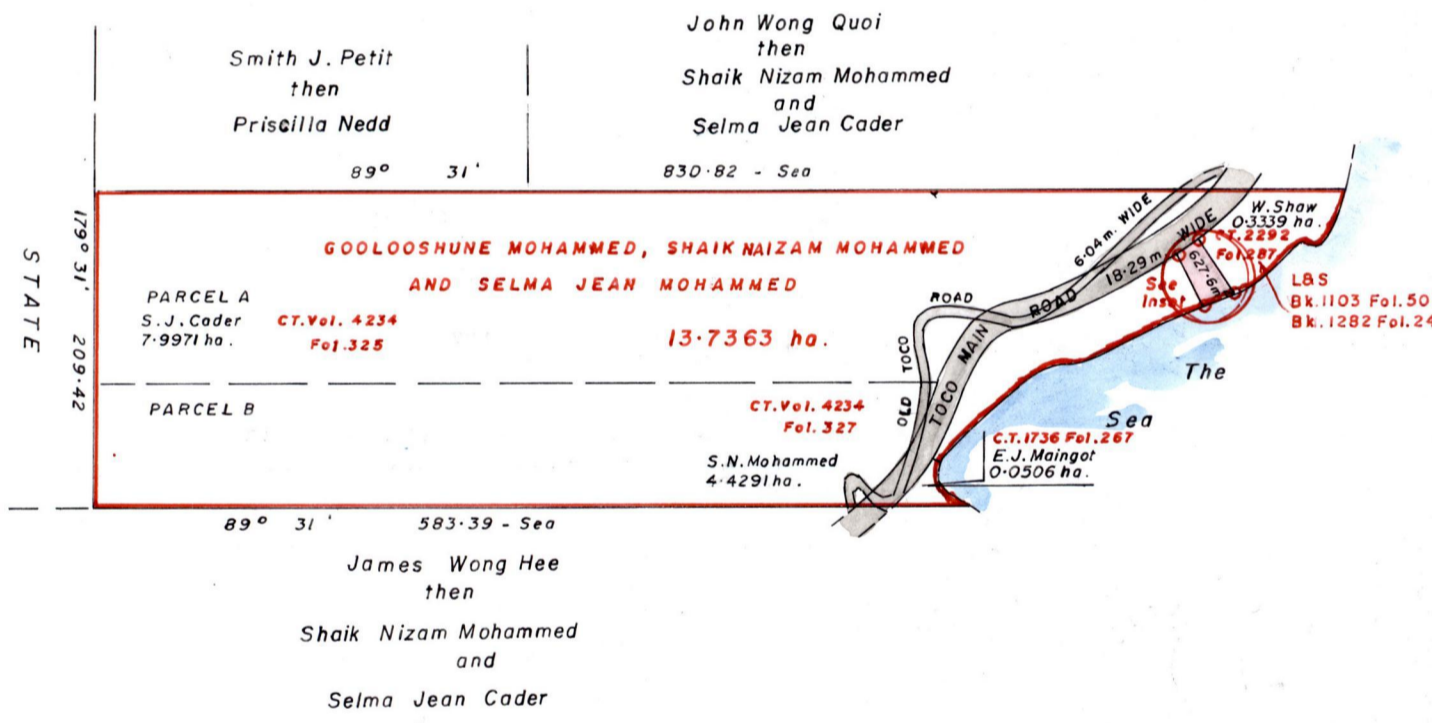
Ward of Toco

C.T. Vol. 1734 Fol. 13

County of St. George



G N
cassini



Approved
[Signature]
Director of Surveys
2007-03-28

SCALE : 1/5000
Distances are in metres

Note: To obtain compass bearings add 29 minutes.

PLAN of a Parcel of land coloured pink in the Ward of Toco
Containing six hundred and twenty seven point six square metres
Surveyed by me with due authority in April 2005

In accordance with Regulation 25(1) of the Land Surveyors' Regulations 1998,
I certify that this plan is correct.

Checked by *[Signature]* 21/3/07

[Signature] T.T.L.

Entered..... Trinidad & Tobago Land Surveyor... 16th May 2005

