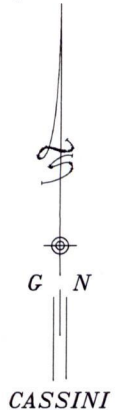
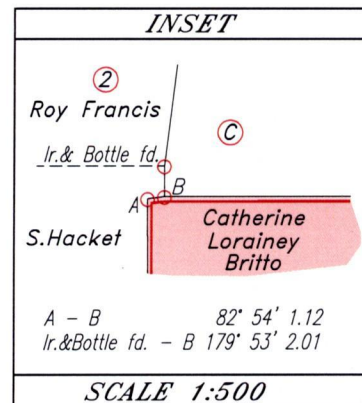
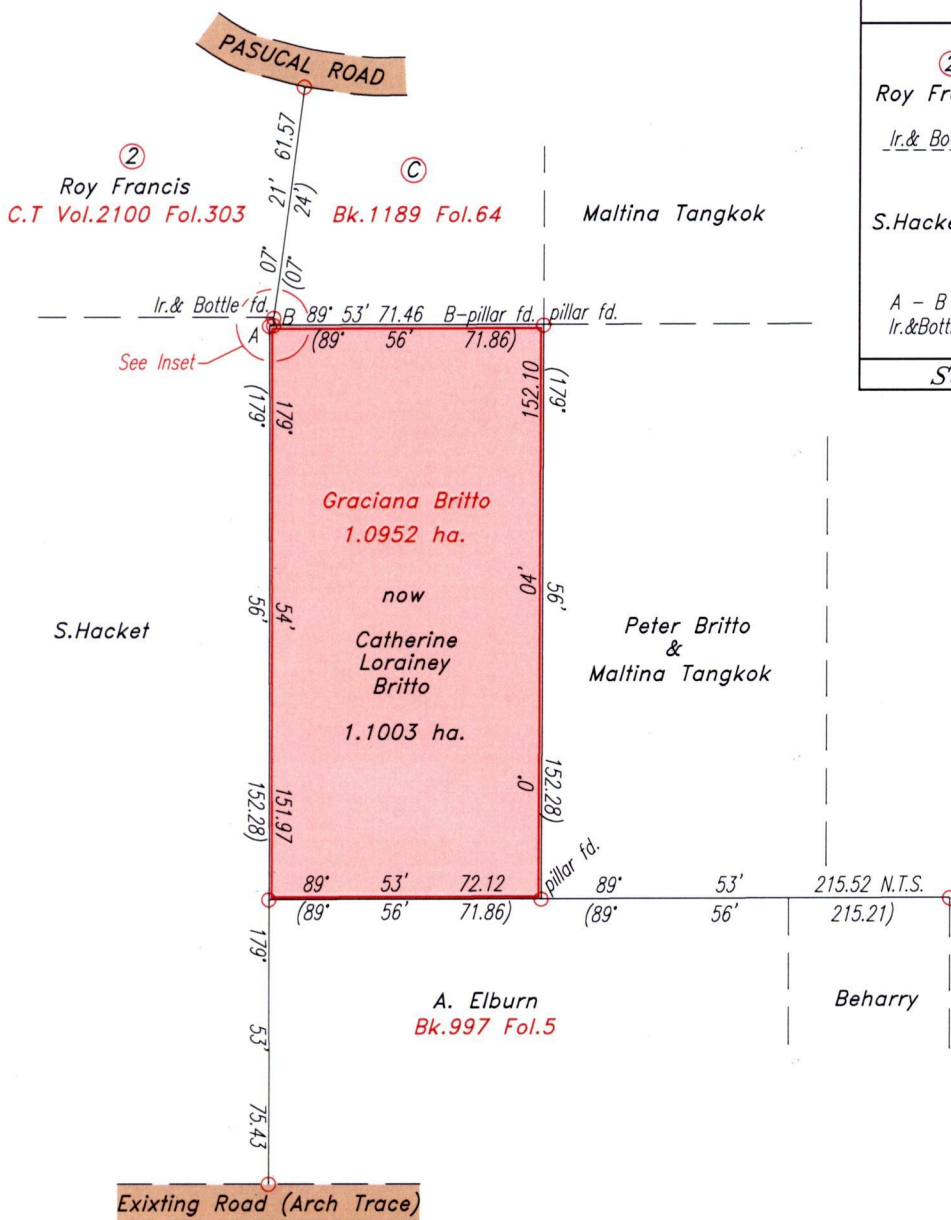


R.P.O Vol. 58 Fol. 487  
C.T. Vol. 1307 Fol. 251

Ward of Savana Grande  
County of Victoria.  
Cadastral Sheet (D.24.J),  $\frac{54B}{2/c}$



Approved..... *[Signature]*  
 Director of Surveys  
 2007-03-12

Ref: R.P.O Vol. 361 Fol. 1  
 Bk. 255 Fol. 122  
 SCALE 1:2000

○ Denotes Iron found except otherwise stated.

Note: Bearings are Cassini grid based on solar observations. Distances are in metres.

To obtain compass bearing add 4 minutes.

Plan of a Parcel of land coloured pink in the Ward of Savana Grande

Containing one point one zero zero three hectares

Surveyed by me, with due authority, in November 2005.

In accordance with Regulation 25(1) of the Land Surveyors' Regulations 1998,

I certify that this plan is correct.

Checked by..... *[Signature]* 1/3/07

Entered .....

*[Signature]*  
 Trinidad & Tobago Land Surveyor 07/02/2007

