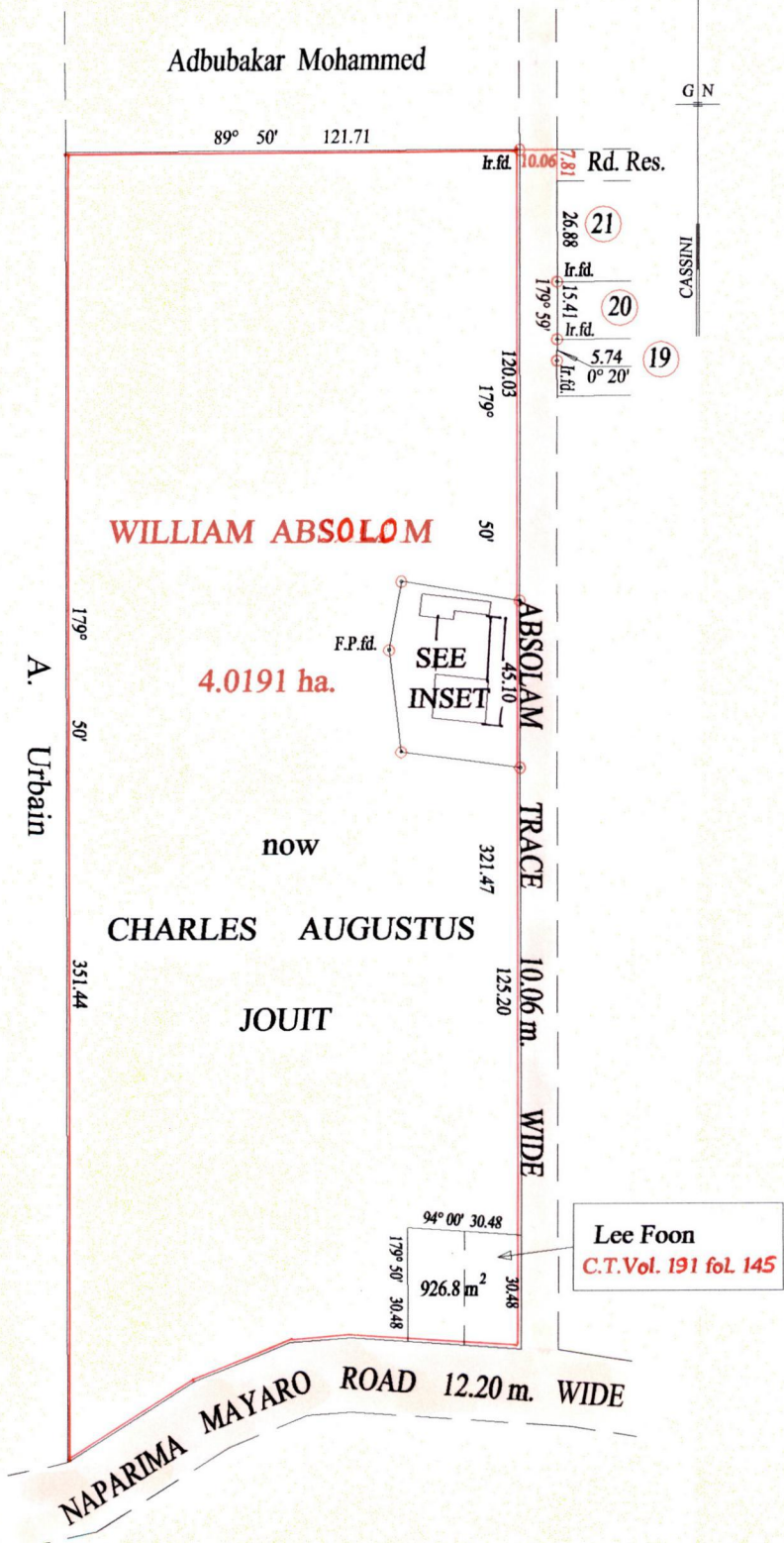
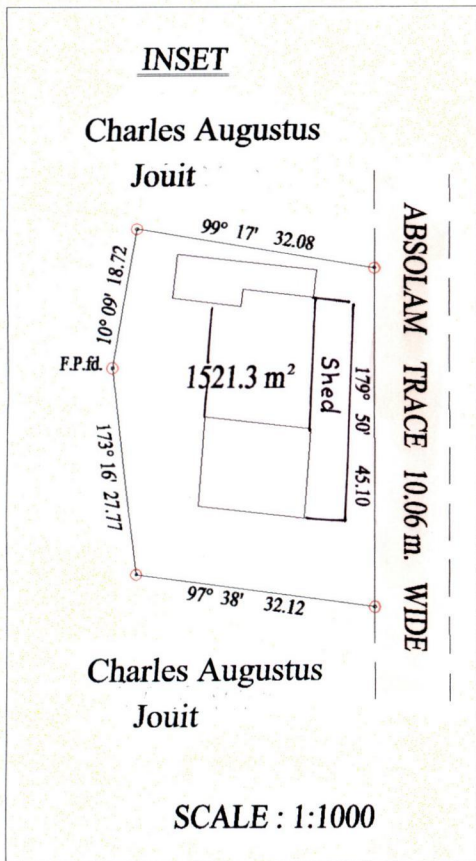


1336

43

R.P.O. Vol. 52 Fol. 213
C.T. Vol. Fol.

Ward of Charuma
County of Nariva
Cadastral Sheet (H.2.A&B) 55.B.
3/c



Vide Bk. 980 fol. 55
Vide Bk. 1117 fol. 172

Approved *[Signature]*
Director of Surveys
2007.02.27

○ Denotes Iron put except stated otherwise.

SCALE : 1:2000

Note: Bearings are cassini grid based on solar observations Distances are in metres
PLAN of a Parcel of land coloured pink in the Ward of Charuma
Containing one thousand five hundred and twenty one point three square metres
Surveyed by me, with due authority, in February 2006
In accordance with Regulation 25 (1) of the Land Surveyors' Regulations 1998,
I certify that this plan is correct.

Checked by *[Signature]*

Entered on Trinidad & Tobago Land Surveyor 2006



Original Book 330 fol. 86

