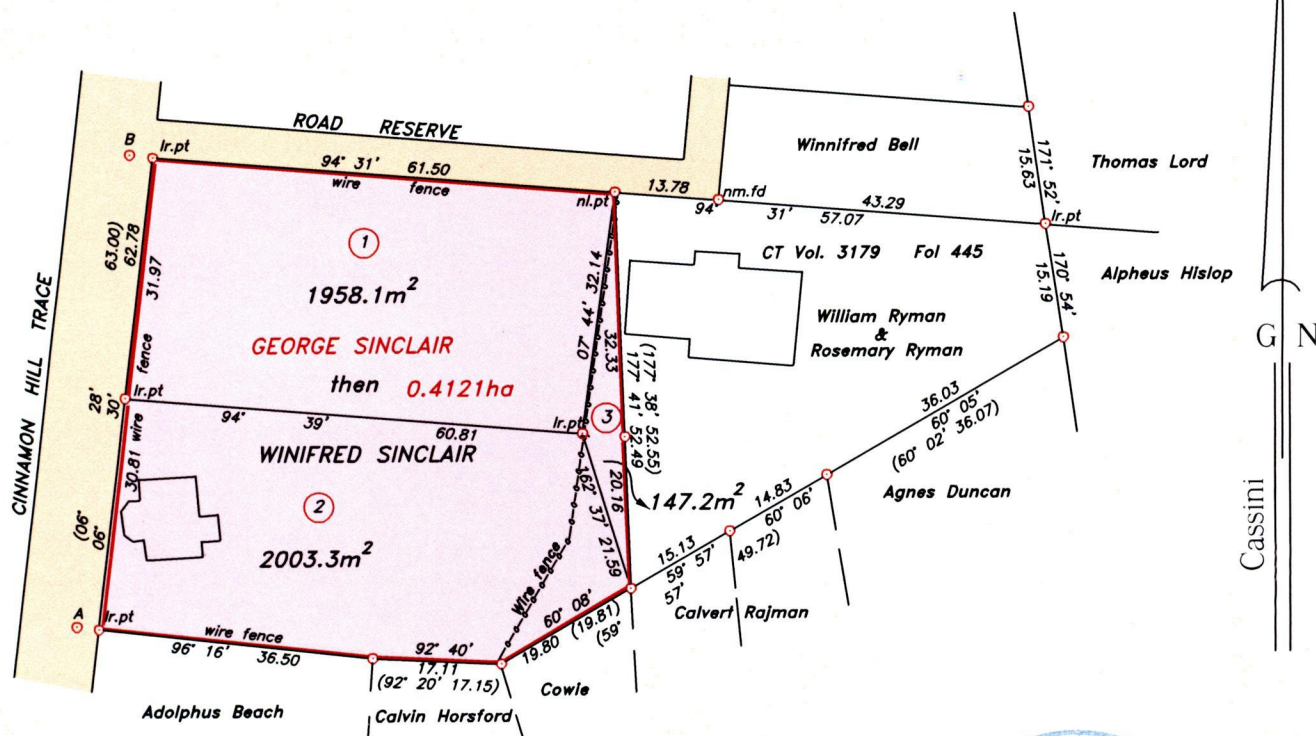


R.P.O Vol. Fol.
C.T Vol. 3174 Fol. 47
U.P.R.N.....
CINNAMON HILL

Cadastral Sheet 1.17.H ^{2G}/_{1/d/4}
Ward of Tobago
Parish of St. Andrew

Previous plan in Bk. 1159 Fol. 79



LEGEND

LINE	AZIMUTH	DISTANCE
B-lr.pt	97°17'	3.09
A-lr.pt	96°55'	2.95

③ To be annexed to lands of William Ryman and Rosemary Ryman



Approved *[Signature]*
 Director of Surveys
 2007.02.27

○ Denotes iron found, except otherwise stated.

Bearings are grid based on solar observations

SCALE 1:1000

Distances are in metres

PLAN of 3 parcels of land coloured pink in the Ward of Tobago
 Containing together four thousand one hundred and eight point six square metres.
 Surveyed by me, with due authority on 10th December 2001.

In accordance with regulation 25 (1) of the Land Surveyors' Regulation 1998, I certify that this plan is correct.

Checked by *[Signature]* 13/2/07
 Entered *[Signature]*

[Signature]
 Lyndon Antoine
 19th January 2007.

Trinidad & Tobago Land Surveyor.....2007.

path01SURVEY\B102\RBENN.DWG

Original Book 1159 fol. 79



[Faint handwritten text]



1386/45