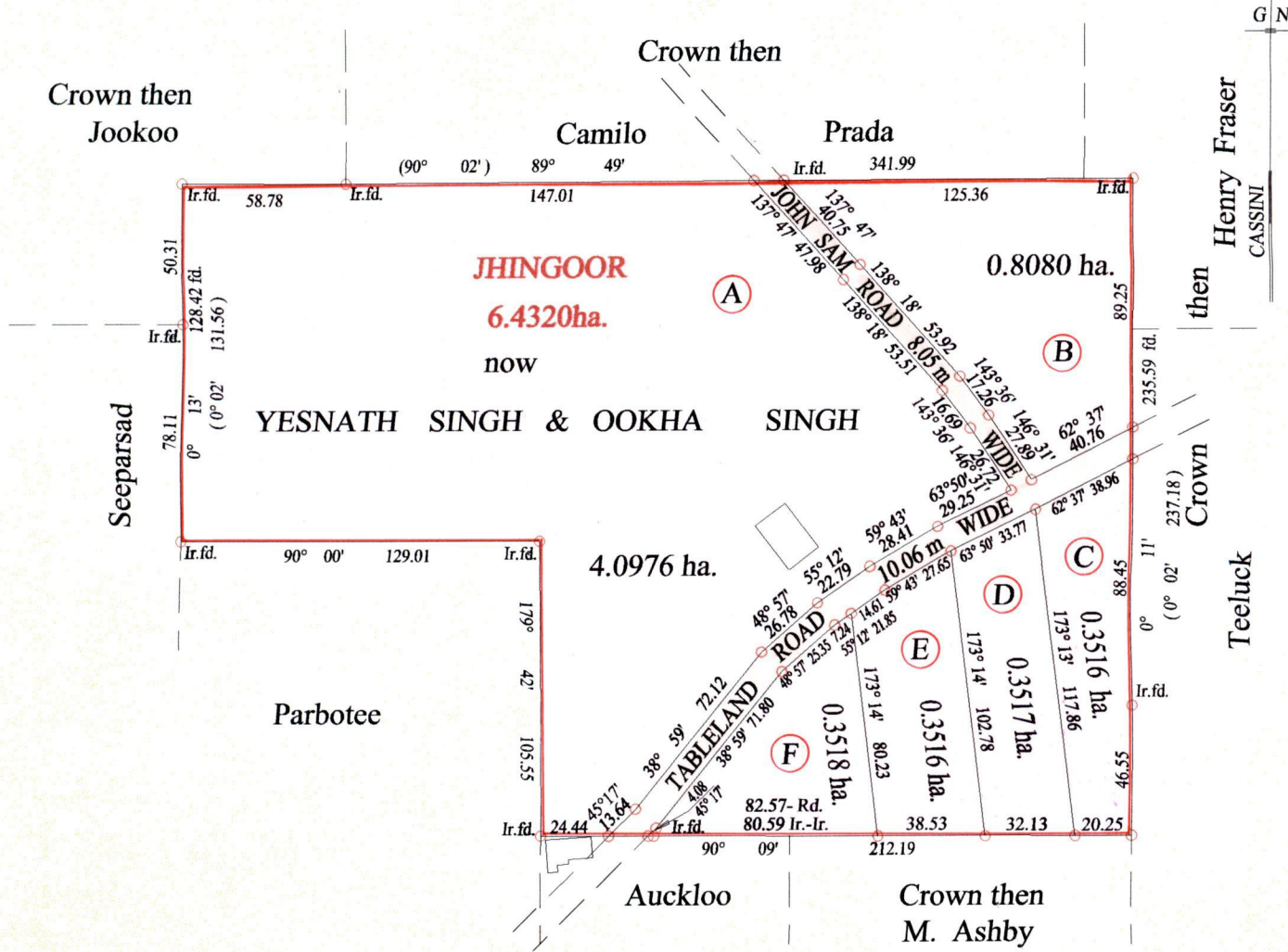


1336

24

R.P.O. Vol. 15 Fol. 69
C.T. Vol. 683 Fol. 116^a
C.T. Vol. 5542 Fol. 303

Ward of Ortoire
County of Victoria
Cadastral Sheet (H I E) 54.F
2/a



Approved *[Signature]*
Director of Surveys
24.10.2006

Vide Bk. 324 fol. Triboohan Mahradge

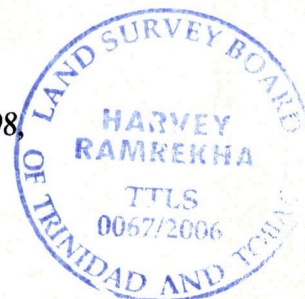
○ Denotes Iron put except stated otherwise.

SCALE : 1:2500

Note: Bearings are cassini grid based on solar observations Distances are in metres
 PLAN of 6 Parcels of land coloured pink in the Ward of Ortoire
 Containing together six point three one two three hectares
 Surveyed by me, with due authority, in June 2005
 In accordance with Regulation 25 (1) of the Land Surveyors' Regulations 1998,
 I certify that this plan is correct.

Checked by *[Signature]*

Entered on Trinidad & Tobago Land Surveyor 9. 11. 2006



Lot #	C.T. Vol & Folio	Names.
A		
B		
C		
D	5542 Fol. 313	Savitri Mohari Ramkelawan Verindar Ramkelawan, Kamera, Sudiwe Ramkelawan & Karishma Varuna Ramkelawan.
E	5542 Fol. 321	Danpath, Dookie & Nirmal Persad
F	5542 Fol. 329	Rohan Ramjoooon

