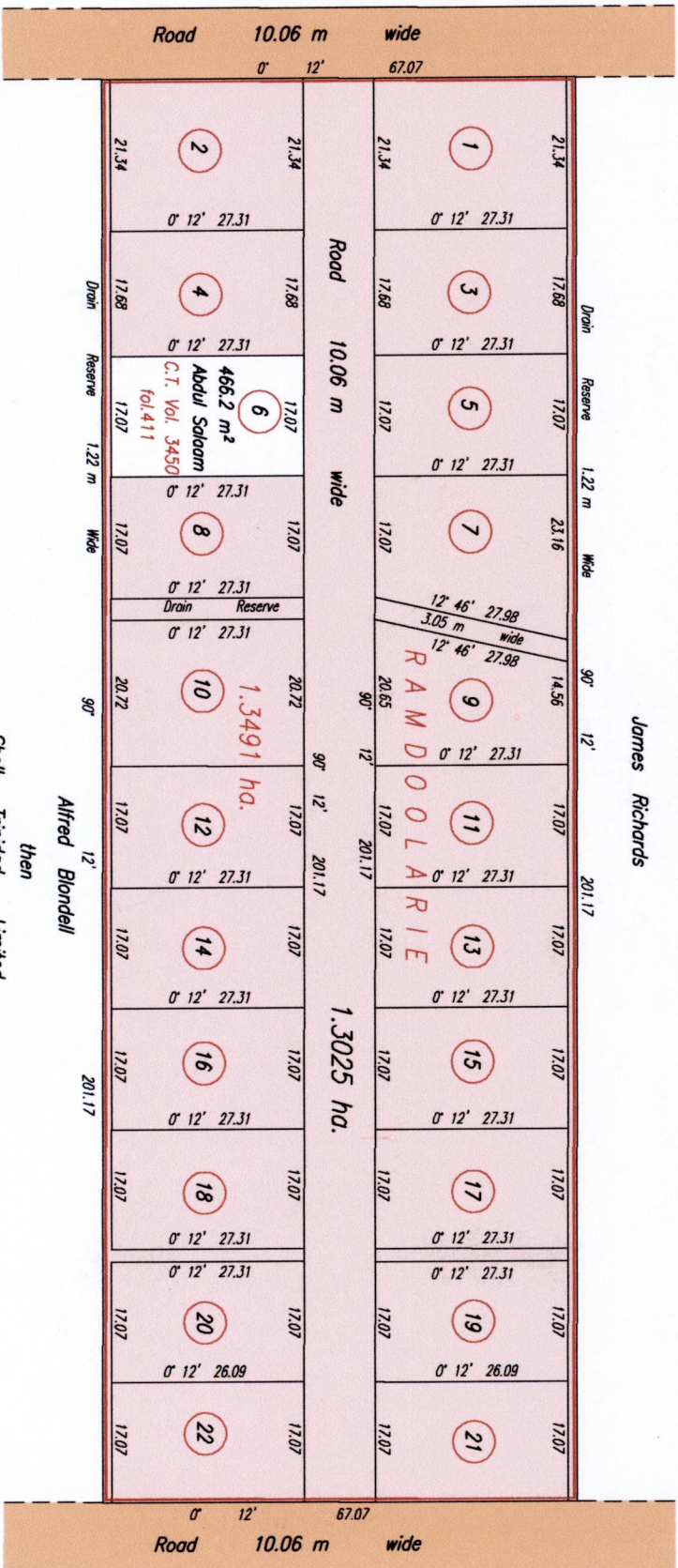


REMAINING PORTION



Approved  
*Alfred Blondell*  
 Director of Surveys  
 2007.9.11

1386

Bearings are Cassini Grid. To obtain compass bearings subtract 12 minutes.

This is a true copy of a diagram of one point three four nine one hectares originally transferred to RAMDOLLAIRE, showing a portion coloured pink and containing one point three zero two five hectares being the remainder after one previous transfer of another portion of land. In accordance with Regulation 25(1) of the Land Surveyors' Regulations 1998, I certify that this plan is correct.

Checked by *Jamal Sookoob* 6/11/07

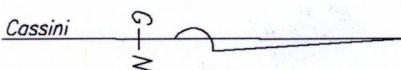
Entered . . . . .

Trinidad & Tobago Land Surveyor . 28th May . 2007



Distances are in Metres

SCALE 1:1000



Bk. 1053 Vol2 fol. 624  
 Bk. 459 fol. 139

James Heywood