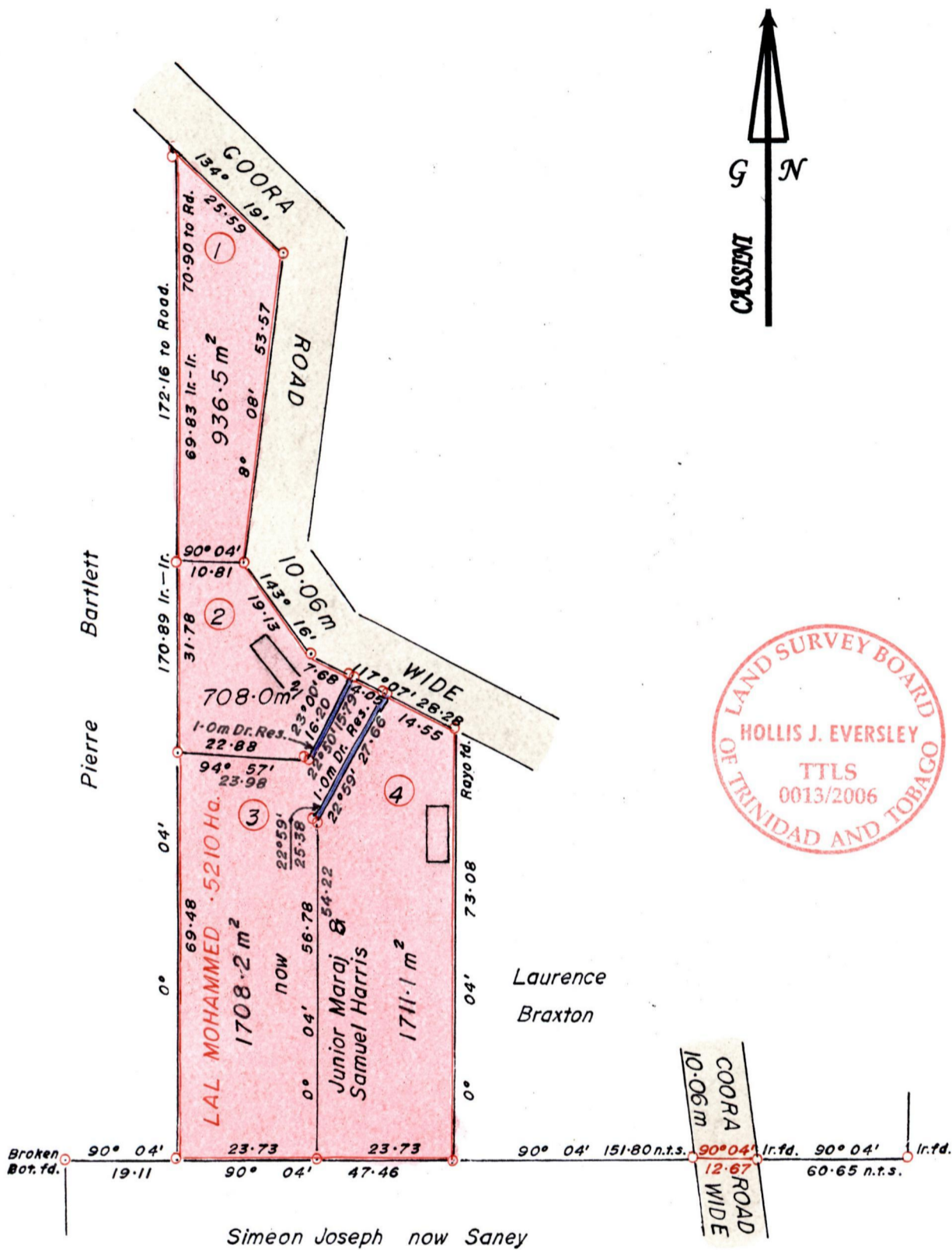


R.P.O Vol. 612 Fol. 433
C.T. Vol. Fol.

Ward of Siparia.
County of St. Patrick.
Cadastral Sheet G.17.C. 73B
1/a



Approved.....
Director of Surveys.
2007-9-3

Bk. 600 : 205.
SCALE 1 : 1000.
Distances are in METRES
○ Denotes Iron Put except otherwise stated
Bearings are Cassini Grid based on Solar Observations.

PLAN of 4 Parcels of land coloured in PINK in the Ward of Siparia.
Containing together zero point five zero six three hectare.
Surveyed by me, with due authority, in January 2000.
In accordance with Reg. 25(1) of the Land Surveyors' Regulations 1998,
I certify that this plan is correct.

Checked by 2207108123
Entered

Trinidad and Tobago Land Surveyor..... 2006.