

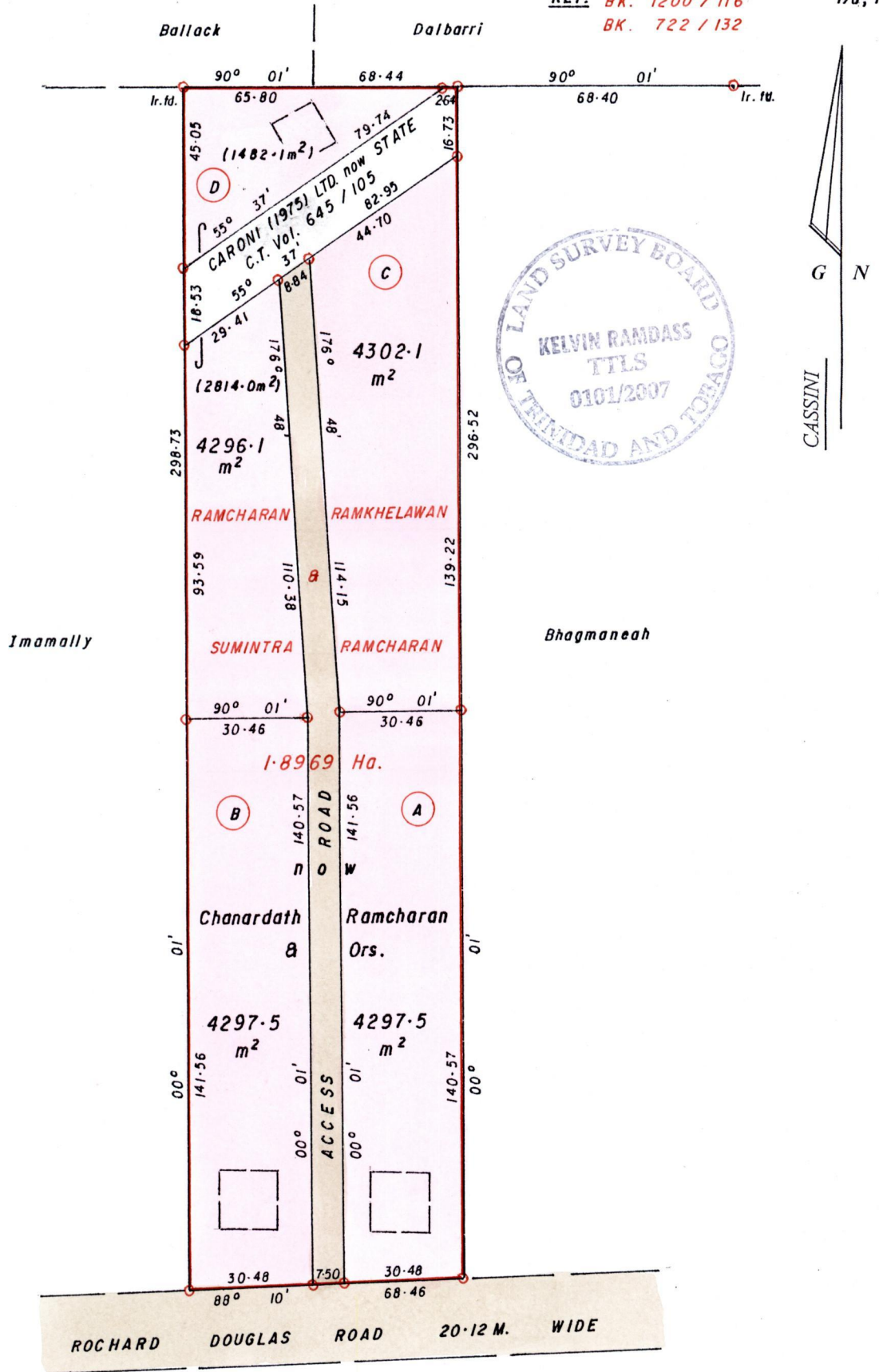
1336

214

R.P.O. Vol. 426
C.T. Vol. 3220

Fol. 407
Fol. 163

Ward of Savana Grande
County of Victoria
Cadastral Sheet G. 14. H., 64 E
REF. BK. 1200 / 116
BK. 722 / 132



Approved *[Signature]*
Director of Surveys
2007-8-27

○ Denotes Iron put unless otherwise stated
Bearings are Cassini Grid based on Solar Obs.
SCALE 1/1500
Distances are in METRES

Note: To Obtain compass bearings add/subtract minutes

PLAN of 4 Parcels of land coloured PINK in the Ward of Savana Grande
Containing together one point seven one nine three hectares
Surveyed by me, with due authority, in August 2005
In accordance with Regulation 25 (1) of the Land Surveyors' Regulations 1998,
I certify that this plan is correct.

Checked by *[Signature]* 23/5/07 *[Signature]*

Entered Trinidad and Tobago Land Surveyor 01/03/2007