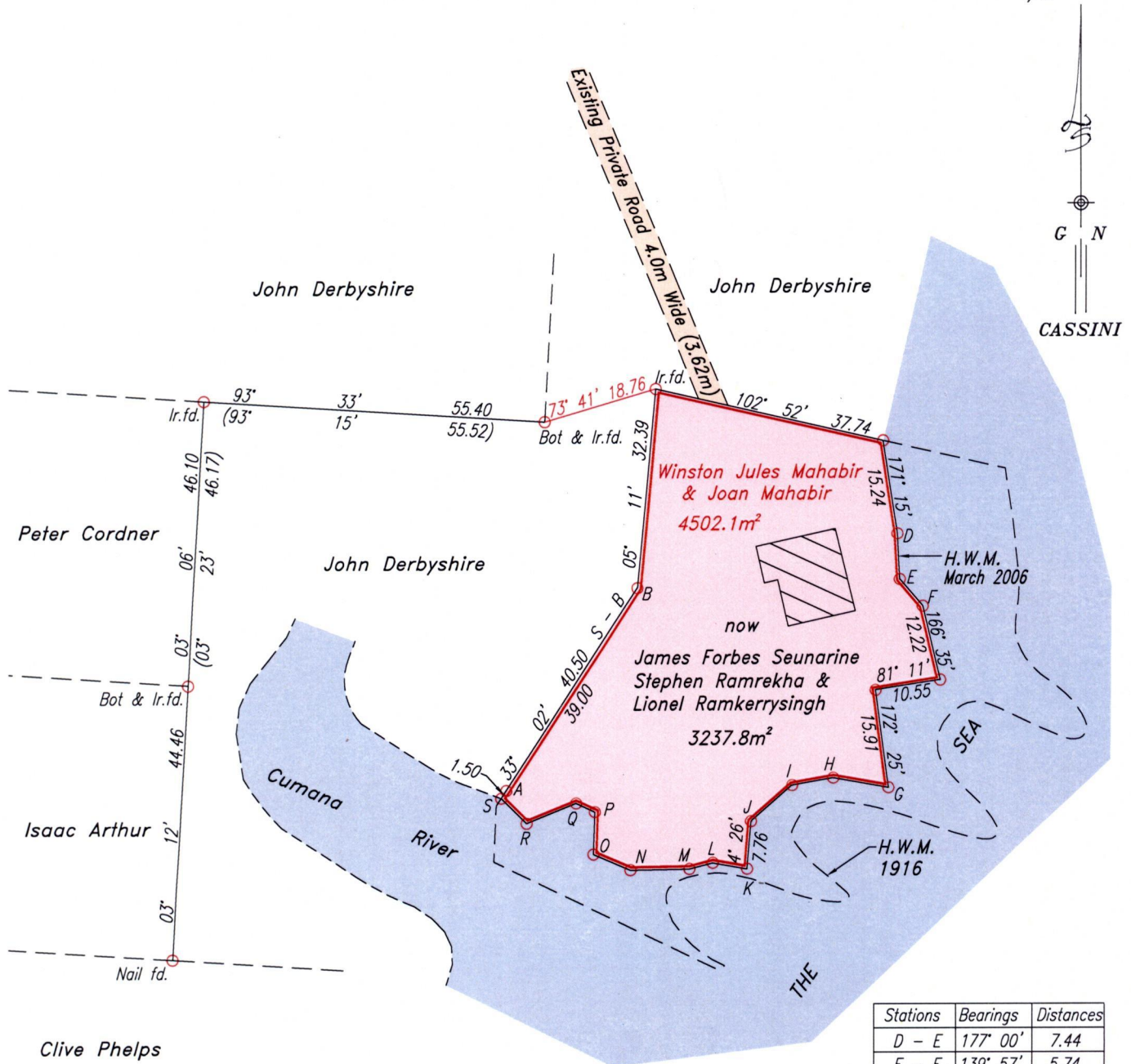


R.P.O Vol. 1041 Fol. 501  
 C.T. Vol. 1345 Fol. 575

Ward of Toco  
 County of St. David  
 Cadastral Sheet (C.9.D),  $\frac{7D}{1/a}$



| Stations | Bearings | Distances |
|----------|----------|-----------|
| D - E    | 177° 00' | 7.44      |
| E - F    | 139° 57' | 5.74      |
| H - G    | 100° 13' | 9.06      |
| I - H    | 79° 47'  | 6.75      |
| J - I    | 48° 37'  | 8.89      |
| L - K    | 100° 01' | 5.66      |
| M - L    | 75° 25'  | 3.91      |
| N - M    | 89° 02'  | 9.56      |
| O - N    | 113° 05' | 6.51      |
| O - P    | 01° 44'  | 6.92      |
| Q - P    | 115° 08' | 3.37      |
| R - Q    | 67° 39'  | 8.67      |
| S - R    | 134° 59' | 5.82      |



Approved.....  
 Director of Surveys  
 2007.8.27

Ref: Bk. 988 Fol. 27  
 Bk. 903 Fol. 113  
 Bk. 960 Fol. 110

○ Denotes Iron put except otherwise stated.

SCALE 1:1000

Note: Bearings are Cassini grid based on solar observations.

Distances are in metres.

To obtain compass bearing add 30 minutes.

Plan of a Parcel of land coloured pink in the Ward of Toco.

Containing three thousand two hundred and thirty seven point eight square metres

Surveyed by me, with due authority, in March 2006.

In accordance with Regulation 25(1) of the Land Surveyors' Regulations 1998, I certify that this plan is correct.

Checked by.....  
 2007.08.20

.....  
 SASHA ADDO  
 Trinidad & Tobago Land Surveyor 16 Aug. 2007

Entered .....