

R.P.O. Vol. 2116

Fol. 491

Cadastral Sheet 63A & 63D (G.11.D)

C.T. Vol. 13

Fol. 453

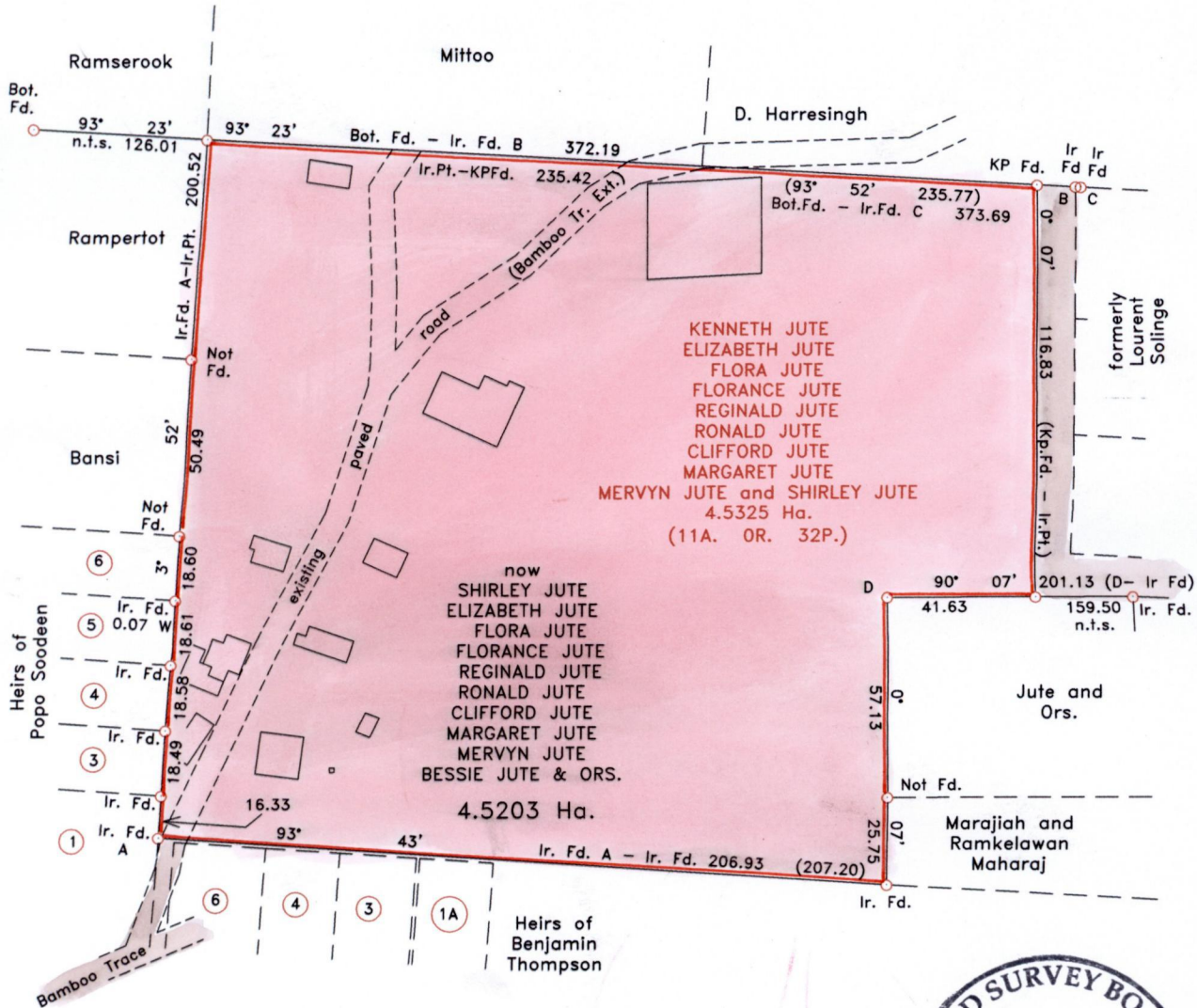
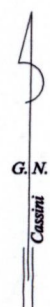
3/d 1/b

Ward of Siparia

County of St. Patrick

U.P.R.N. No. ....

- References:
- Bk. 1124 Fol. 192
  - Bk. 504 Fol. 97
  - Plan K.E. 16
  - Bk. 455 Fol. 124
  - Bk. 995 Fol. 74
  - Bk. 710 Fol. 103



Approved *Tyrra Kemp*  
 Director of Surveys  
 2007-8-20



Scale 1: 2,000  
 Distances are in metres

○ Denotes iron put unless otherwise stated.  
 Bearings are Cassini Grid based on solar observations.  
 PLAN of one parcel of land coloured pink in the Ward of Siparia.  
 Comprising Four point Five Two Zero Three hectares.  
 Surveyed by me with due authority in June, 2004.  
 In accordance with Regulation 25 (1) of the Land Surveyors' Regulations 1998,  
 I certify that this plan is correct.

Checked by *Mavis/S/S*  
*Kamal J. Sant*

Entered on .....  
 Trinidad & Tobago Land Surveyor...*8th August*..., 2007.