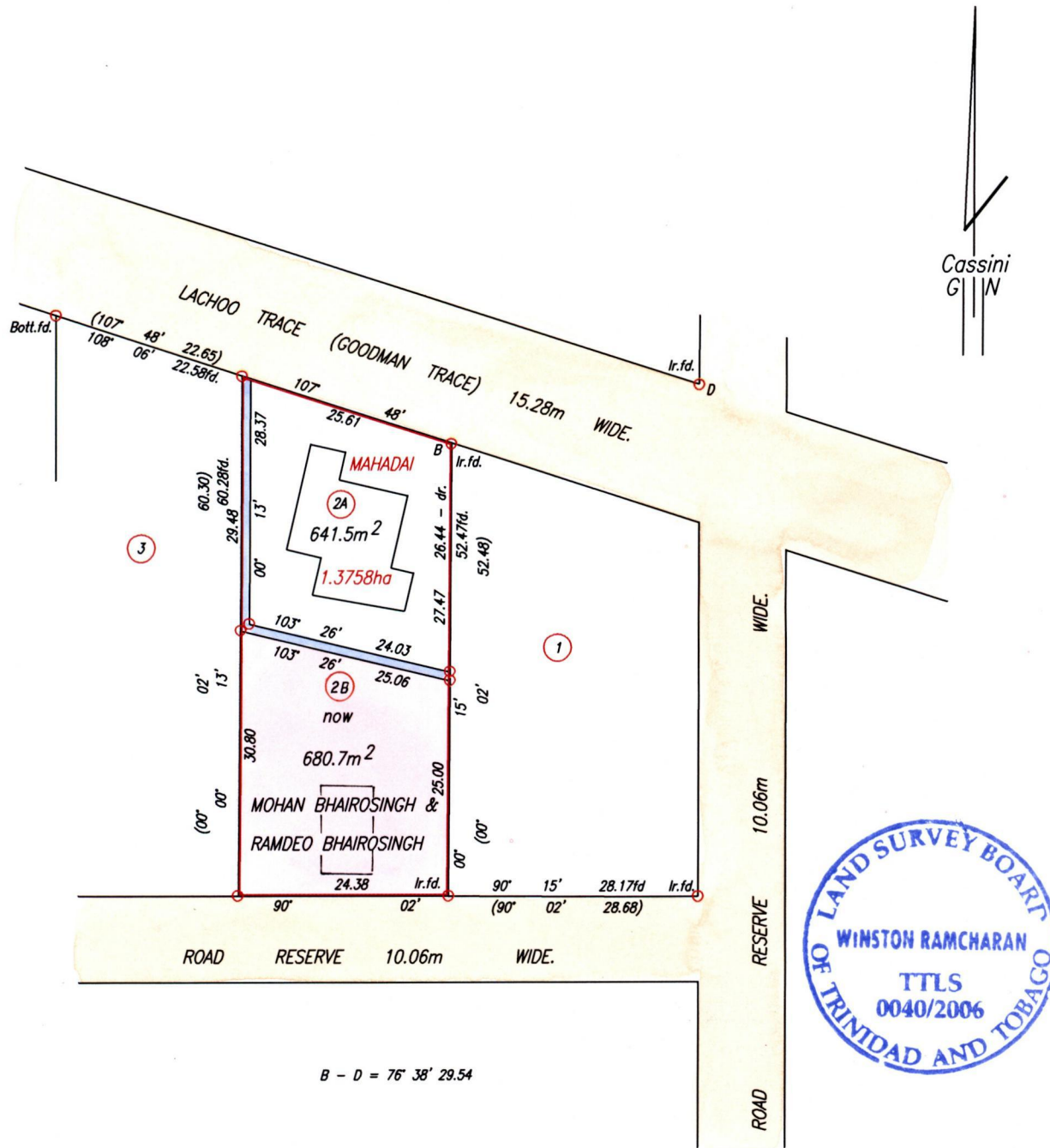


R.P.O. Vol. 105 Fol. 41

C.T. Vol. 1526 Fol. 55

Original Bk. 393 fol 269

Cadastral Sheet G.13.J. 63F  
Ward of Siparia 3/b  
County of St.Patrick.



Denotes Drain Res. 1.00m Wide.

Approved *[Signature]*  
Director of Surveys

SCALE 1:750  
Distances are in Metres

○ Denotes Iron put except otherwise stated.  
Bearings are Cassini Grid based on Solar Observations.  
PLAN of a Parcel of land coloured pink in the Ward of Siparia  
Containing six hundred and eighty point seven square metres.  
Surveyed by me, with due authority, in May, 2004  
In accordance with Regulation 25(1) of the Land Surveyors' Regulations 1998,  
I certify that this plan is correct.

Checked by *[Signature]*

Entered . . . . . Trinidad & Tobago Land Surveyor 8<sup>th</sup> December . . . . . 2006