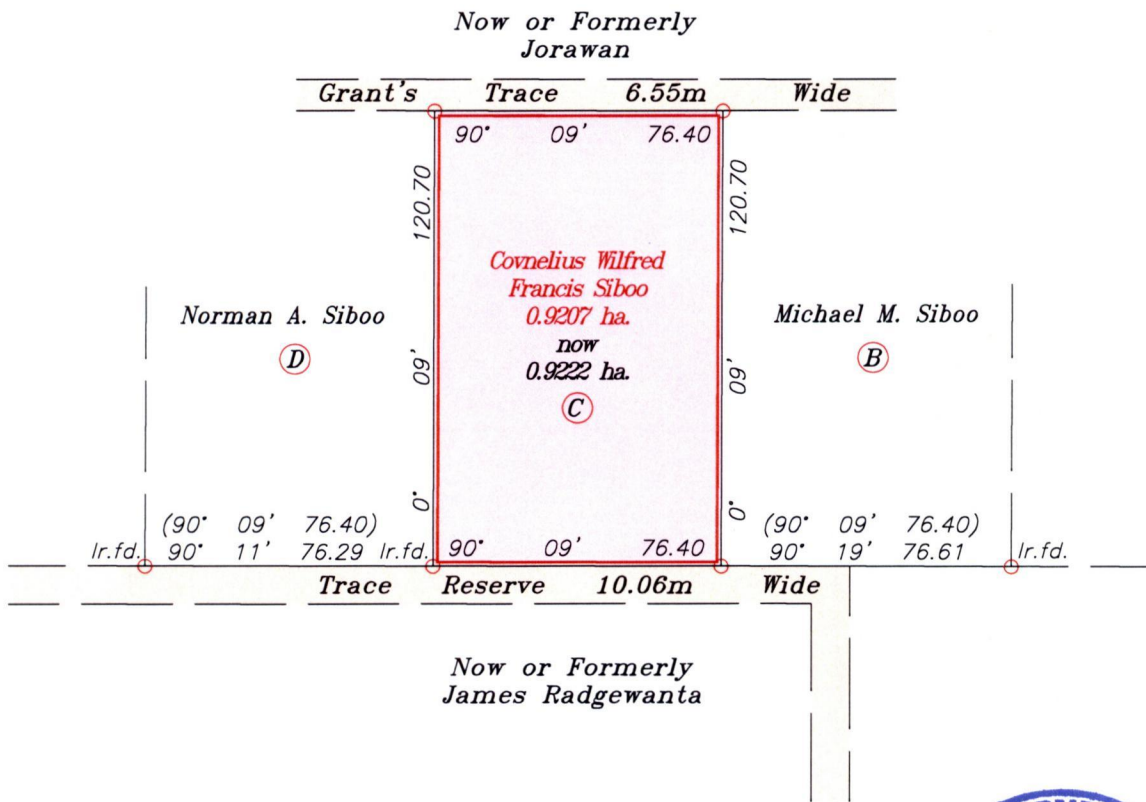


1386

190

R.P.O Vol. 59 Fol. 579  
C.T. Vol. 2729 Fol. 39

Ward of La Brea  
County of St. Patrick  
Cadastral Sheet (G.11.B) 62F  
2/a



Approved.....  
Director of Surveys  
2007.7.27

Ref.: PLAN R.H.8  
Bk. 457 Fol. 96

SCALE 1:2000

○ Denotes Iron put except stated otherwise.

Distances are in metres.

Note: Bearings are Cassini Grid based on solar observations.

To obtain compass bearing subtract 09 minutes.

Plan of a Parcel of land coloured pink in the Ward of La Brea

Containing zero point nine two two two hectares

Surveyed by me with due authority, in May 2007.

In accordance with Regulation 25(1) of the Land Surveyors' Regulations 1998,

I certify that this plan is correct.

Checked by.....  
July 22/07

SASHA ADDO

Entered .....

Trinidad & Tobago Land Surveyor ..... 19 July 2007