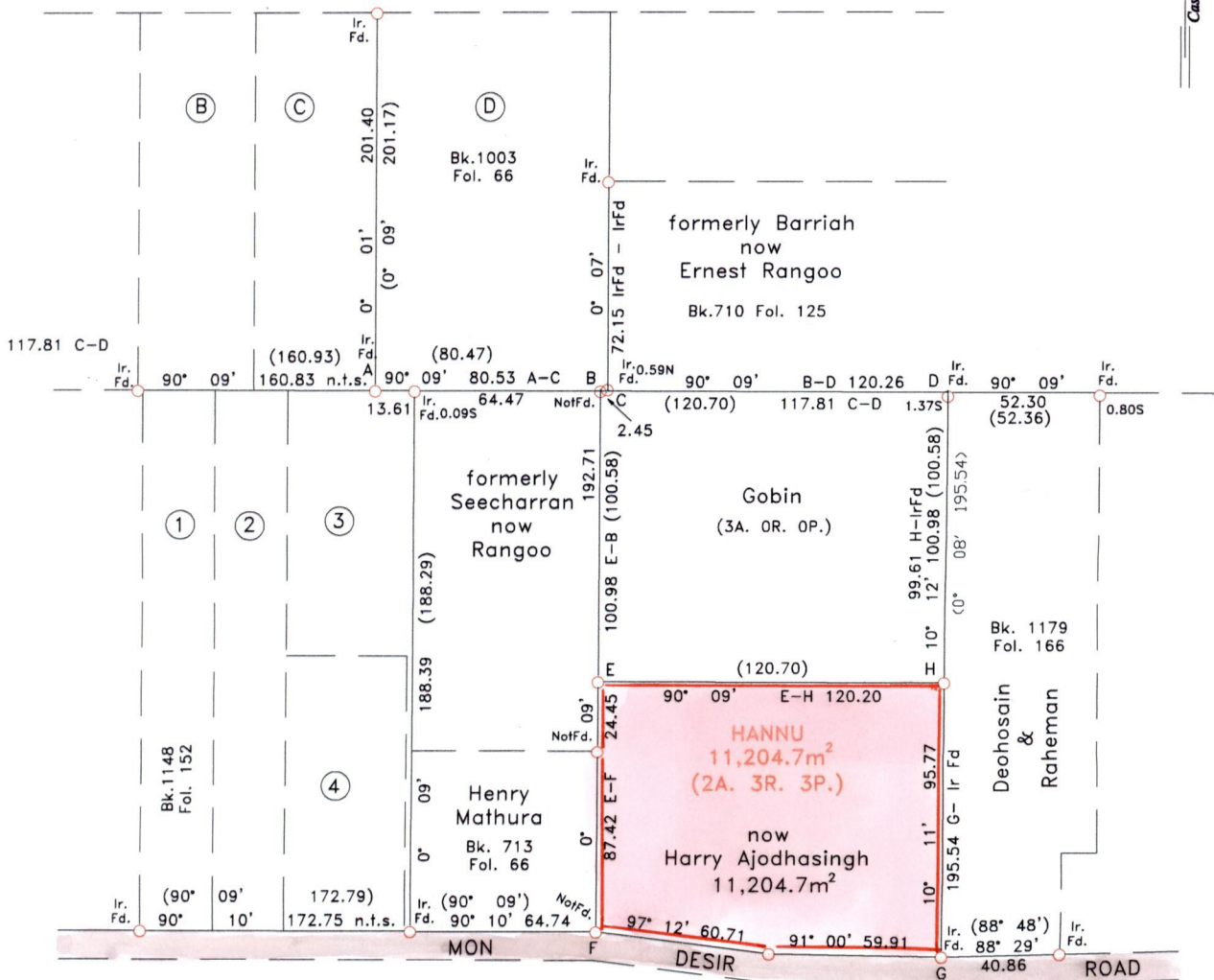
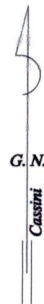


R.P.O. Vol. 16 Fol. 135
C.T. Vol. 133 Fol. 423

Ward of La Brea
County of St. Patrick
Cadastral Sheet 62C (G.6.N)
4/c

U.P.R.N. No.:.....

Previous Survey in
Bk. 710 Fol. 121



Approved by *[Signature]*
Director of Surveys
2007.7.24

Scale 1 : 2,500

Distances are in metres

○ Denotes iron put unless otherwise stated

Bearings are Cassini grid based on solar observations.

PLAN of a parcel of land coloured pink in the Ward of La Brea.
Containing Eleven thousand Two hundred and four point Seven sq. metres.
Surveyed by me with due authority, on 14th May, 2007 at the request
of V. Ajodhasingh.
In accordance with Regulation 25(1) of the Land Surveyors' Regulations 1998,
I certify that this plan is correct.

Checked by *[Signature]*
Trinidad & Tobago Land Surveyor *[Signature]*

Entered by
04th June, 2007.