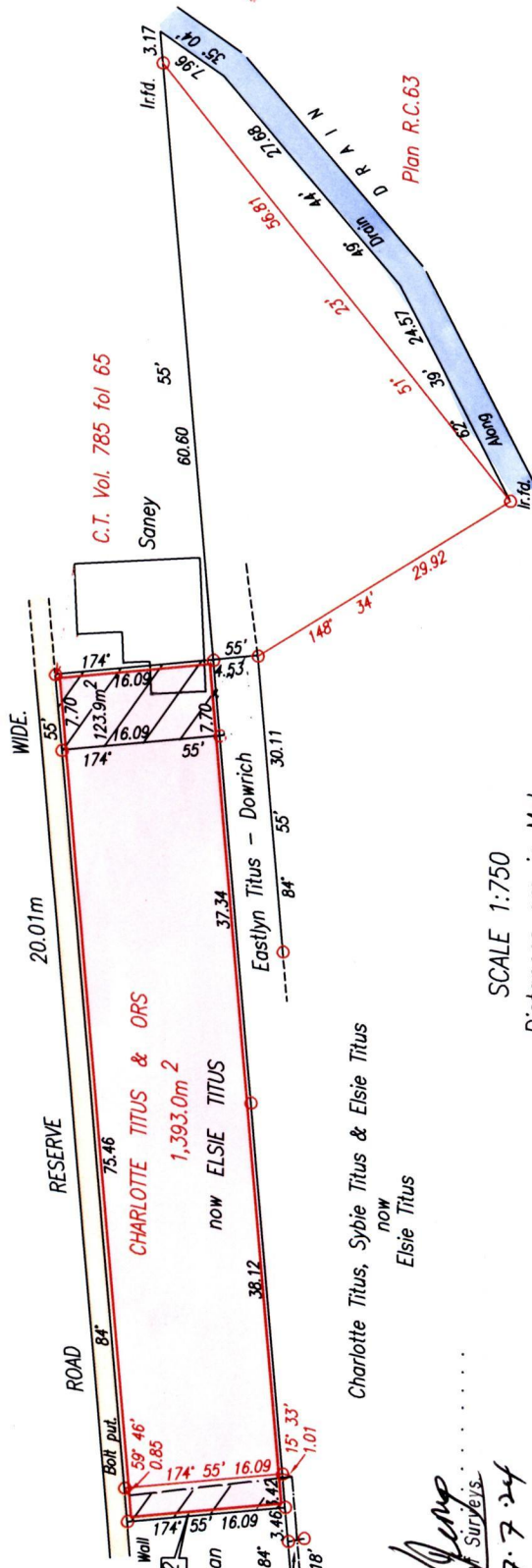


C.T. Vol. 1294 Fol. 333
 C.T. Vol. 4442 Fol. 59

Vide Plan FA 17
 " " RC 63

Cadastral Sheet G.12.N & O. 73A
 2/b
 Ward of Siparia
 County of St.Patrick



Approved
 Director of Surveys
 2007.7.24

SCALE 1:750
 Distances are in Metres

○ Denotes Iron put except otherwise stated.

Bearings are Cassini Grid based on Solar Observations.

Plan of a Parcel of land coloured pink in the Ward of Siparia

Containing one thousand, three hundred and ninety three point zero square metres.

Surveyed by me, with due authority, in May, 2006

In accordance with Regulation 25(1) of the Land Surveyors' Regulations 1998,

I certify that this plan is correct.

Checked by *[Signature]* 2007.7.19

Entered Trinidad & Tobago Land Surveyor 2006



Encroachment by Marchan 45.6m²



Encroachment by Saney 123.9m²

Unencumbered Area = 1,223.5m²

1386

175