

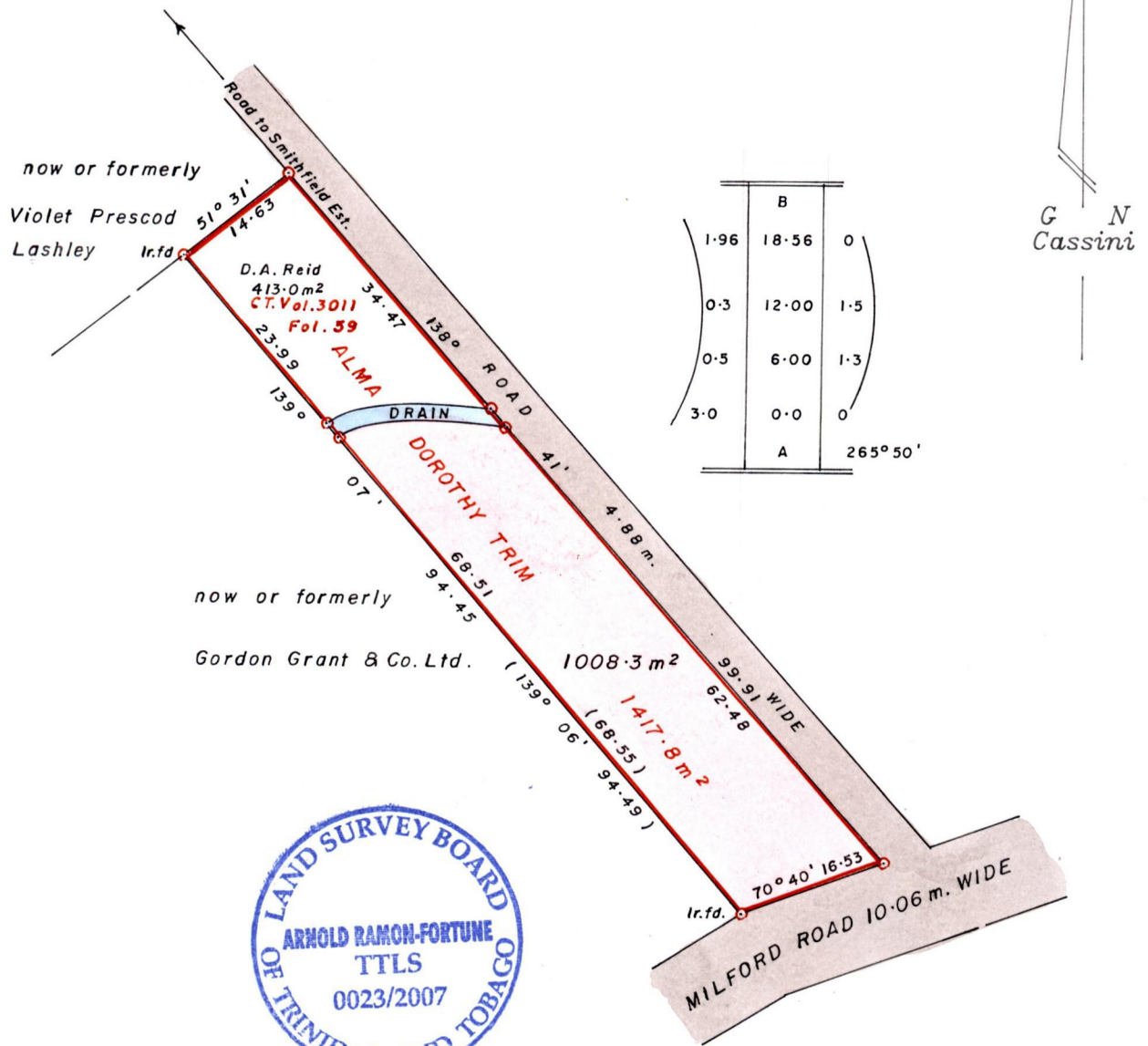
Ward of Tobago

Parish of St. Andrew

R.P.O.Vol. Fol.

C.T.Vol. 1583 Fol. 183

Cadastral Sheet 1.17. $\frac{26}{3/d/1}$



Approved
[Signature]
 Director of Surveys
 2007.7.10

Iron put at each corner except otherwise indicated

Bearings are based on Solar Observations.

Note: To obtain compass bearings subtract minutes.

SCALE : 1/750

Distances are in metres

PLAN of a Parcel of land coloured pink in the Ward of Tobago

Containing one thousand and eight point three square metres

Prepared
~~Surveyed~~ by me with due authority in May 2007 from a survey done by
 Mr. Shelby Coker in 2000
 In accordance with Reg 25(1) of the Land Surveyors' Regulations 1998,

I certify that this plan is correct.

Checked by *[Signature]* *[Signature]*

Entered..... Trinidad & Tobago Land Surveyor..... *[Signature]* 2007