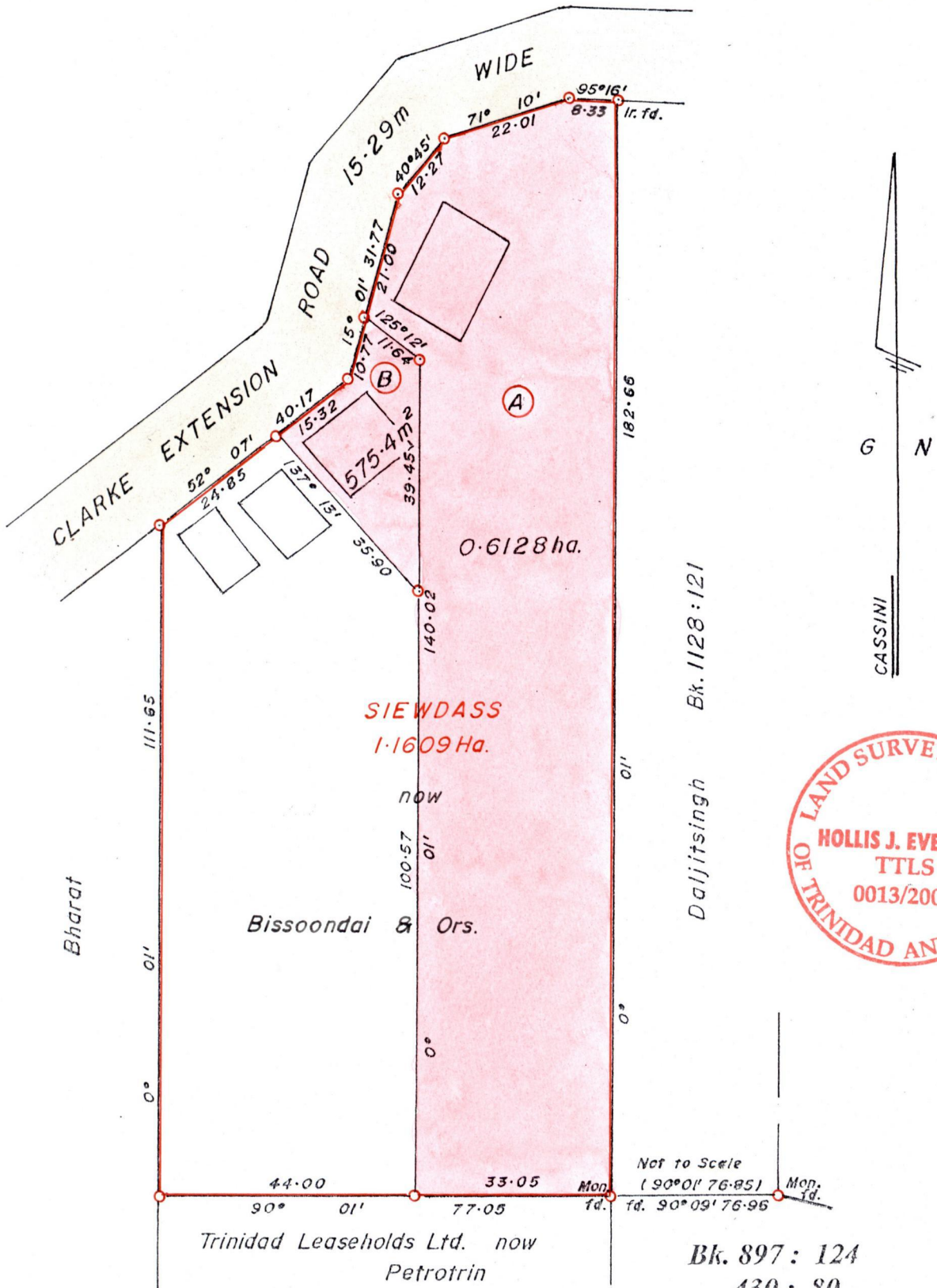


R.P.O. Vol. 433 Fol. 107  
C.T. Vol. 1777 Fol. 253

Ward of Siparia.  
County of St. Patrick.  
Cadastral Sheet G.13.L 63F  
4/b



Approved .....  
Director of Surveys.  
2007.6.28

Distances are in METRES.  
○ Denotes Iron Put except otherwise stated  
Scale 1 : 1000.

Plan of 2 Parcels of land colored Pink in the Ward of Siparia.  
Containing zero point six seven zero three hectare.  
Surveyed by me, with due authority, in March 2005.

In accordance with Reg.25(1) of the Land Surveyors' Regulations 1998,  
I certify that this Plan is correct.

Checked by .....  
2007.6.27

Entered ..... Trinidad and Tobago Land Surveyor ..... 2005.