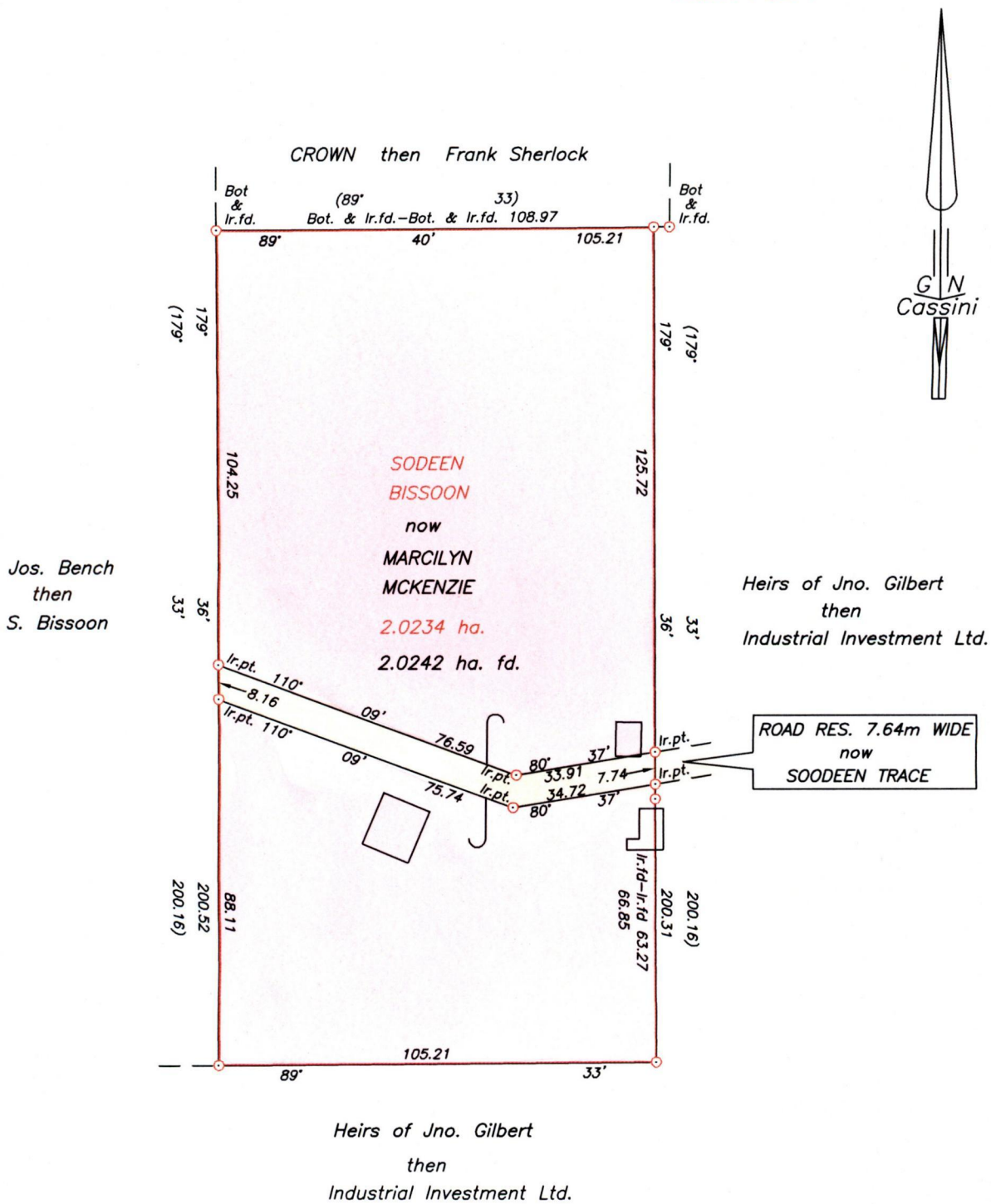


R.P.O. Vol. 247  
C.T. Vol. 4191

Fol. 297  
Fol. 285

Cadastral Sheet C.14.F. <sup>16C</sup>/<sub>37a</sub>  
Ward of Matura  
County of St. Andrew  
BK.134 FOL.225  
BK.204 FOL.74



Approved *[Signature]*  
 Director of Surveys  
 2007-08-19

SCALE 1:1500  
 Distances are in metres



○ Denotes Iron found except otherwise stated  
 Bearings are Cassini Grid based on Solar Observations  
 Plan of a Parcel of land coloured pink in the Ward of Matura  
 Containing two point zero two four two hectares  
 Surveyed by me, with due authority, on 29th August 2006  
 In accordance with Regulation 25 (1) of the Land Surveyors' Regulations 1998,  
 I certify that this plan is correct.

*[Signature]*

Entered on .....  
 Checked by *[Signature]* 15/9. 2006  
 Trinidad & Tobago Land Surveyor