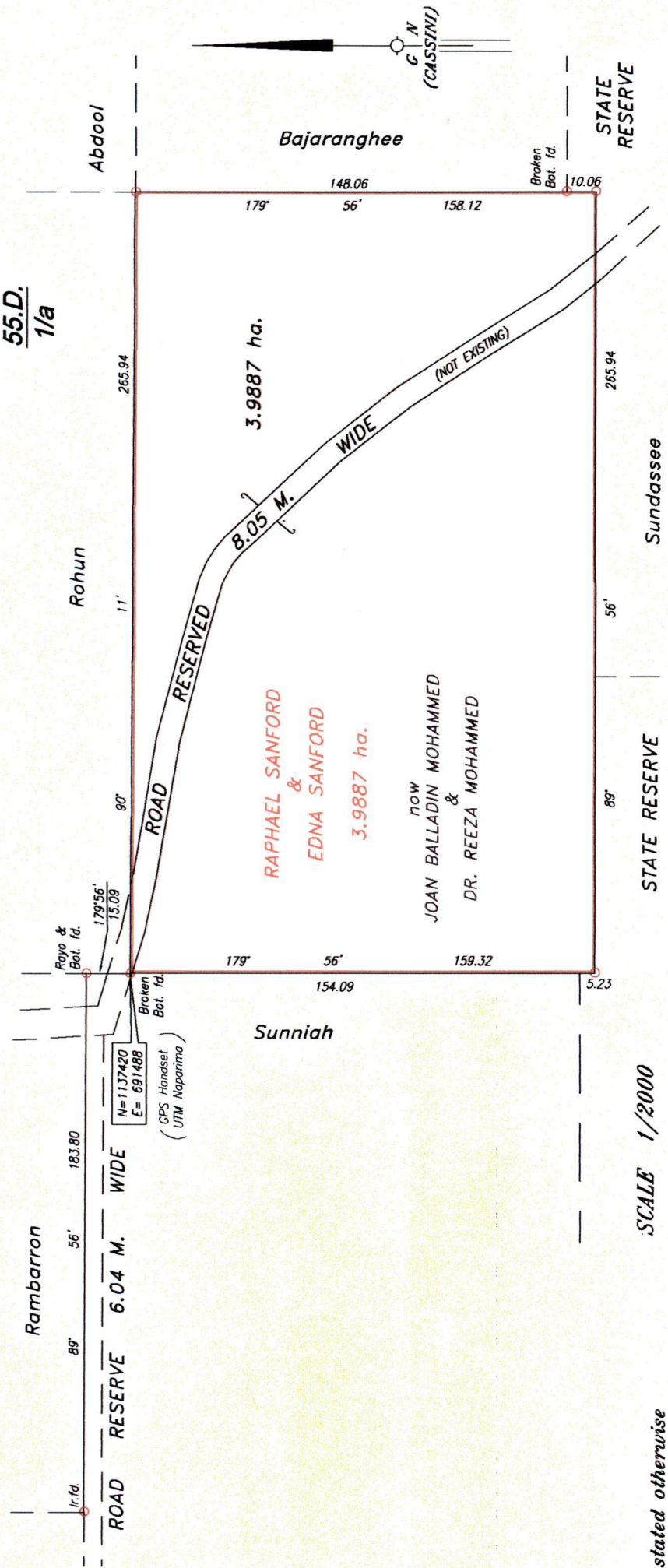


Ward of Ortoire
County of Victoria
Cadastral Sheet H.1.F.
55.D.
1/a

R.P.O. Vol. 55
C.T. Vol. 1828
U.P.I.N No.

Fol. 89
Fol. 145



Approved *[Signature]*
Director of Surveys
2008.12.04

○ Denotes Iron put except stated otherwise

Bearings are Cassini Grid based on Solar Observations Distances are in metres

Plan of a Parcel of land coloured pink in the Ward of Ortoire

Containing three point nine eight seven hectares

Surveyed by me, with due authority, in April 2006

In accordance with Regulation 25 (1) of the Land Surveyors' Regulations 1998,

I certify that this plan is correct.

Checked by *[Signature]*
Mald 6/11/06

Entered by

Trinidad & Tobago Land Surveyor 19.05.2006



Bk. 326 Fol. 191

Original Book 326 fol. 191

