

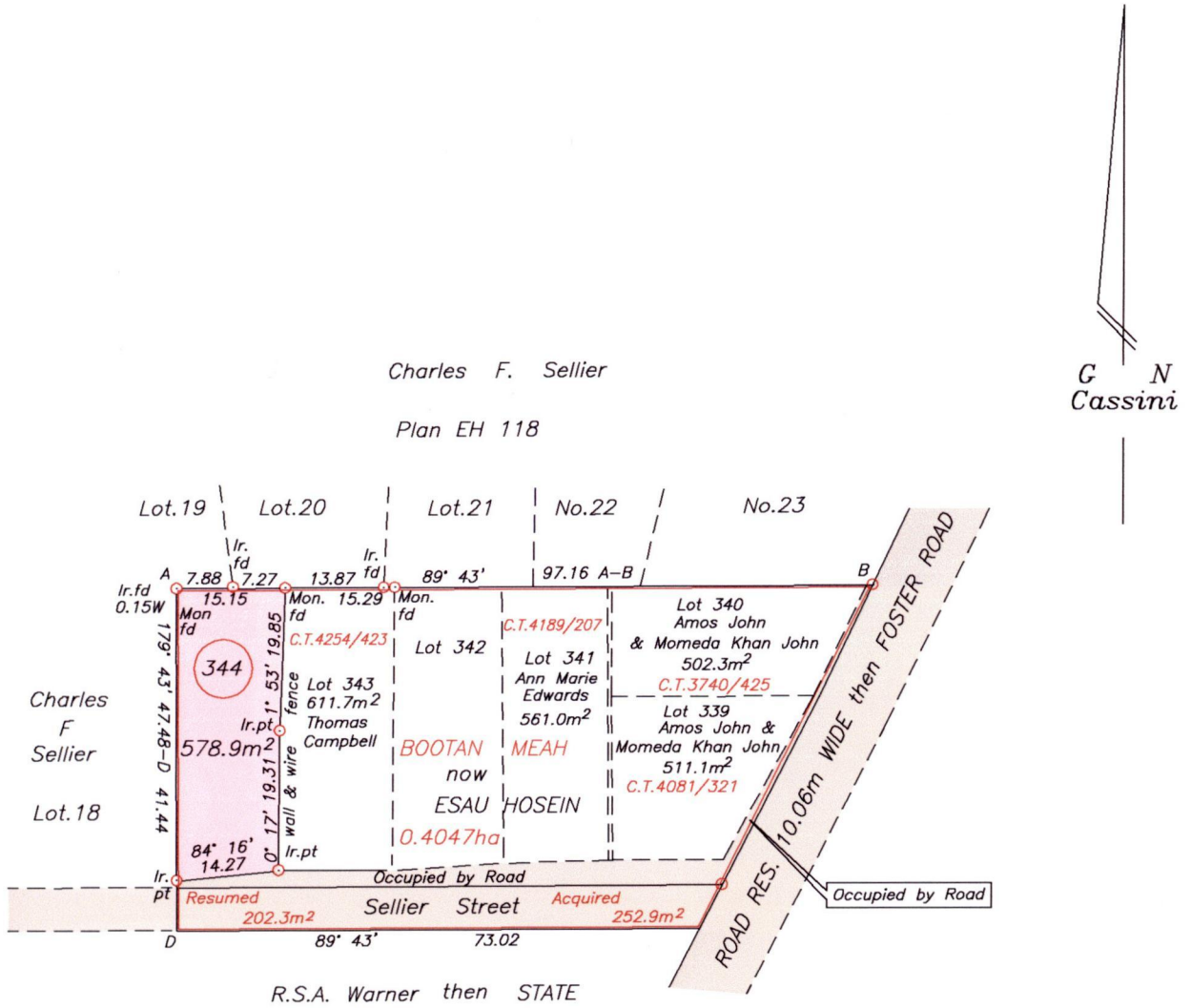
Ward of Manzanilla

R.P.O. Vol. 79 Fol. 625

County of St. Andrew

C.T. Vol. 358A Fol. 363

Cadastral Sheet C.22.N $\frac{25F}{1/b}$



Approved

 Director of Surveys
 2007-05-19

See Bk.1053 /703

SCALE 1/1000

Distances are in metres



Note: To obtain compass bearings add 17 minutes.

PLAN of a Parcel of land coloured Pink in the Ward of Manzanilla
 Containing five hundred and seventy eight point nine square metres
 Surveyed by me with due authority in August 1986

In accordance with regulation 25 (1) of the Land Surveyors' Regulations 1998,
 I certify that this plan is correct.

Checked by

Entered..... Trinidad & Tobago # March 20.07
 Land Surveyor