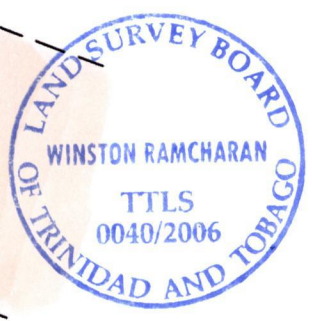
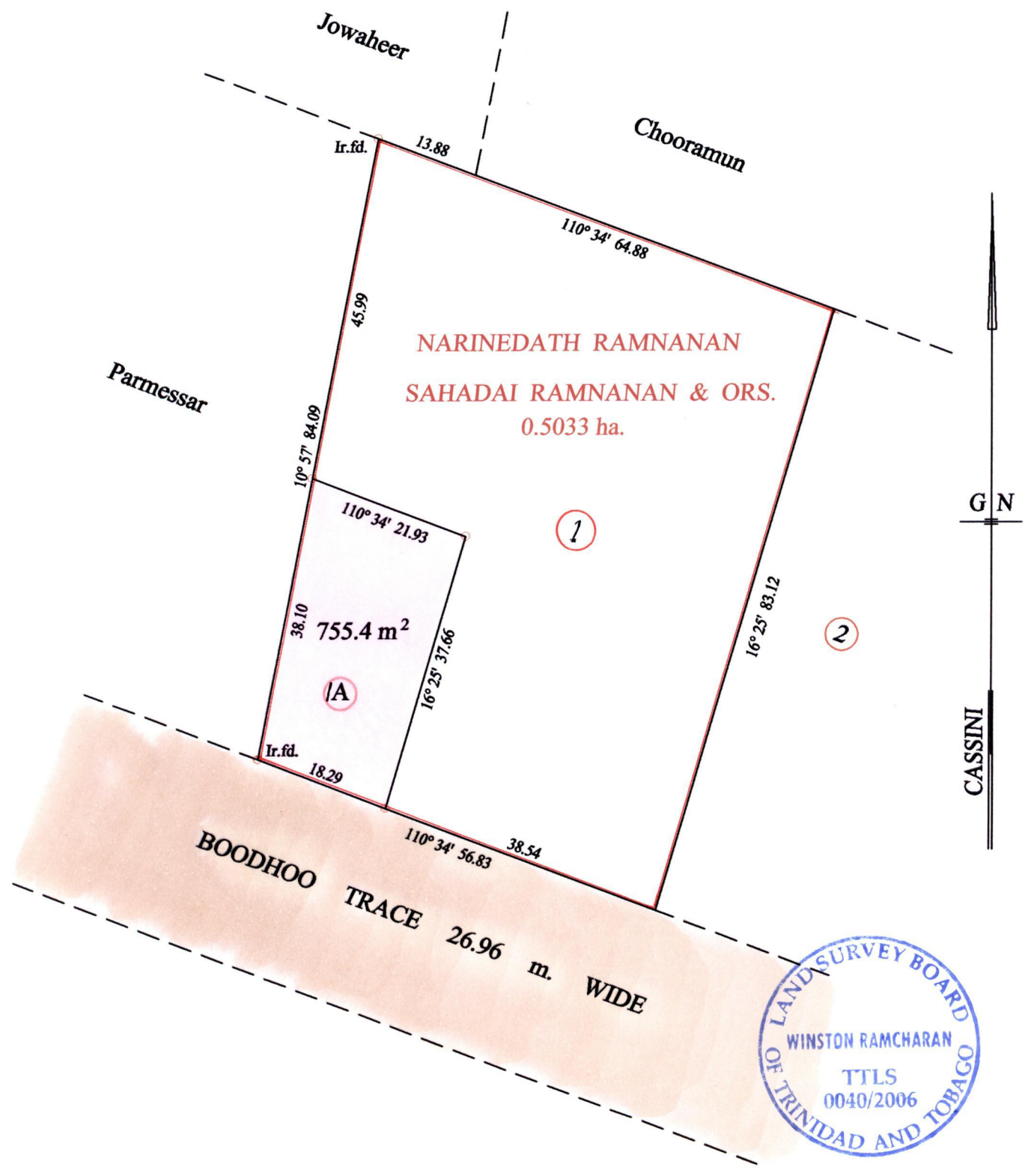


1386

113

R.P.O. Vol. 59 Fol. 303
C.T. Vol. 2696 Fol. 467

Ward of Naparima
County of Victoria
Cadastral Sheet (G.13.B.) 63.F.
1/b



Approved *[Signature]*
Director of Surveys
2007.05.24

Vide Bk. 1124 fol. 221

o Denotes Iron put except stated otherwise. SCALE : 1:750
 Note: Bearings are cassini grid based on solar observations Distances are in metres
 PLAN of a Parcel of land coloured pink in the Ward of Naparima
 Containing seven hundred and fifty five point four square metres
 Surveyed by me, with due authority, in April 2006
 In accordance with Regulation 25 (1) of the Land Surveyors' Regulations 1998,
 I certify that this plan is correct.

Checked by *[Signature]*
Winston Ramcharan

Entered on Trinidad & Tobago Land Surveyor 13.4. April...2006