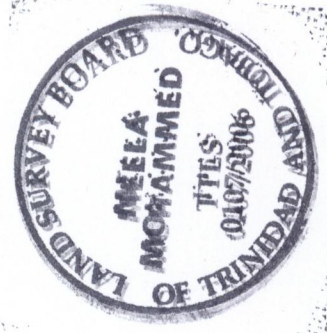
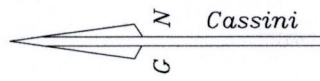
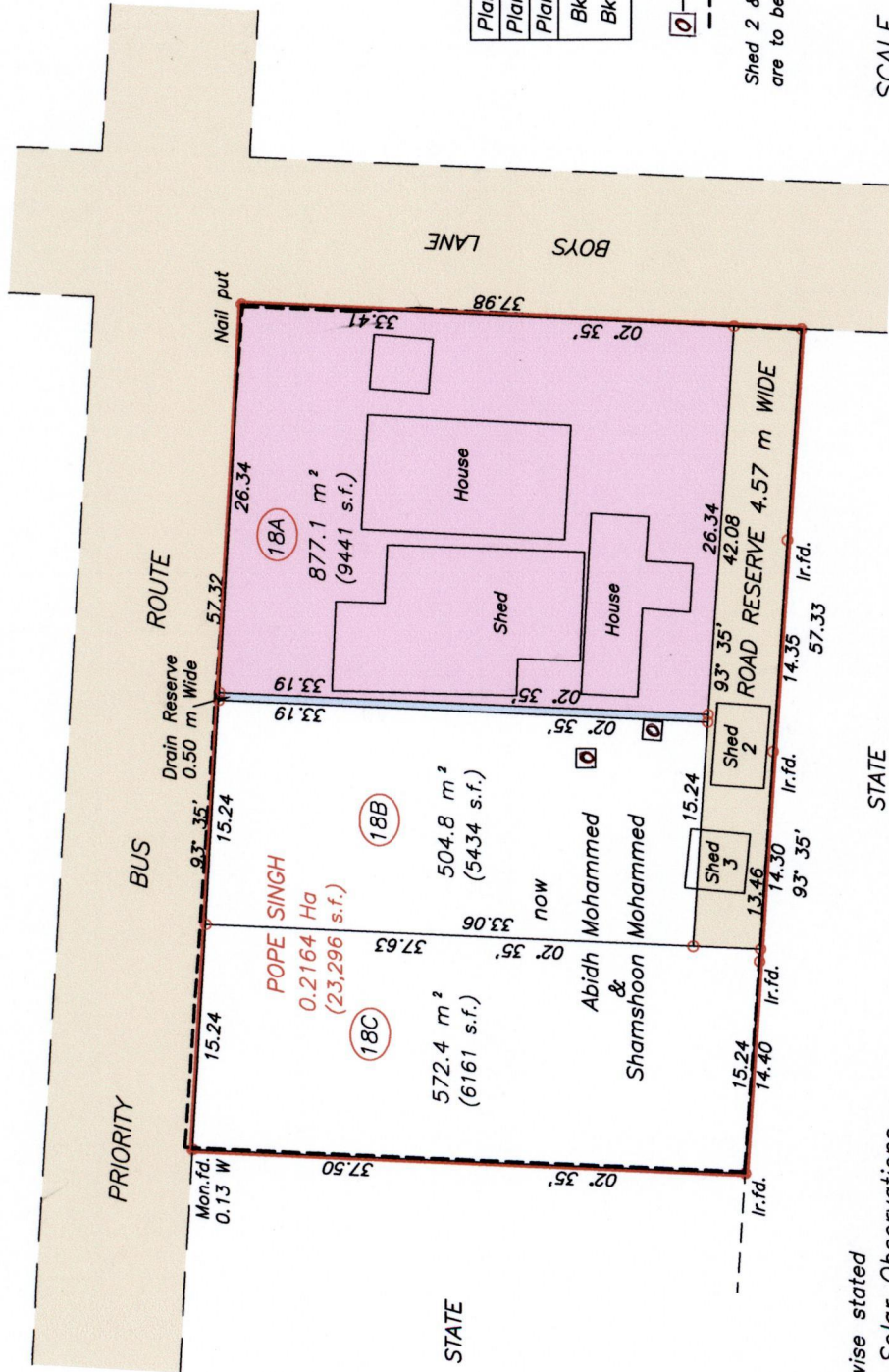


Cadastral Sheet B.24.C. 24B  
 4/b  
 Ward of Arima  
 County of St. George  
D'abadie

1386



10



|               |
|---------------|
| Plan E.C. 189 |
| Plan E.K. 183 |
| Plan X.A. 51  |
| Bk. 1094:95   |
| Bk. 948:304   |

□ - Out House  
 --- Brick Wall  
 Shed 2 & 3 and Out house  
 are to be demolished

SCALE 1/500  
 Distances are in metres

R.P.O Vol. Fol.  
 C.T. Vol. 1568 Fol. 111

Approved.....  
*Y. J. D. Jones*  
 Director of Surveys  
 2007-01-09

○ Denotes Iron put except where otherwise stated  
 Bearings are Cassini Grid based on Solar Observations  
 Plan of a Parcel of land coloured pink in the Ward of Arima  
 Containing eight seven seven point one square metres.

Surveyed by me, with due authority, in September 2005 for Abidh & Shamshoon Mohammed  
 In accordance with Regulation 25 (1) of the Land Surveyors' Regulations 1998,  
 I certify that this plan is correct.

Checked By *S. D. ...* 2006.12.27  
 Entered On.....

*M. Meela Mohammed*

Trinidad & Tobago Land Surveyor... 5th Sept. 2006

STATE  
 Plan E.C. 189