

Process ID# 79988

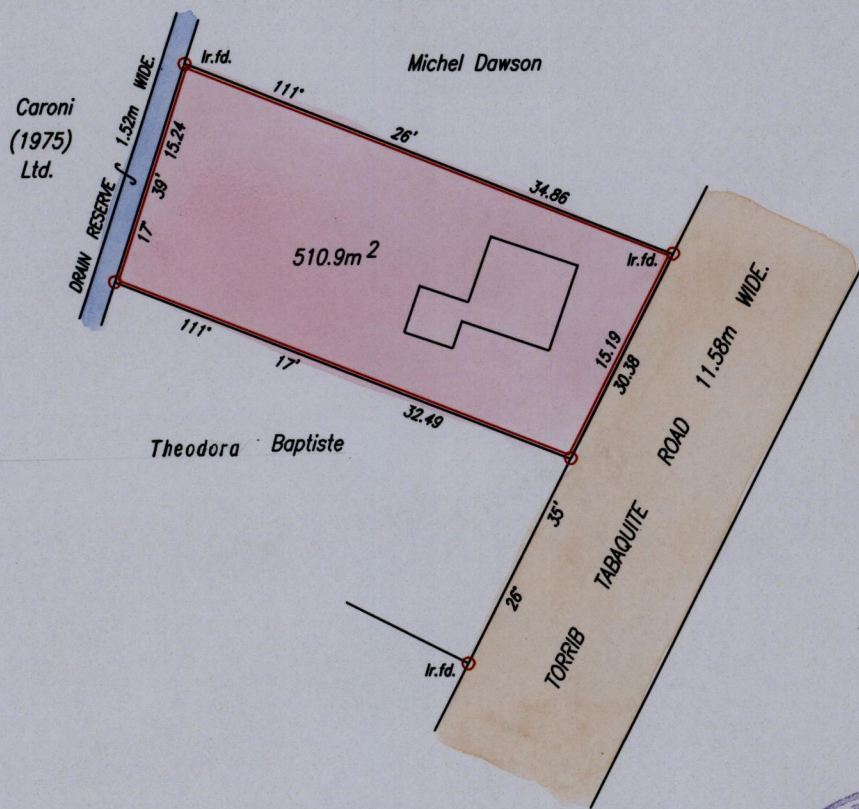
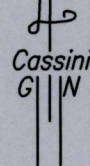
Cadastral Sheet G.5.F.  $\frac{54E}{2/a}$

Ward of Savana Grande

County of Victoria.

To be brought under the Provisions of the  
Real Property Ordinance

Vide Bk.1054 fol 149



Approved

*[Signature]*  
Director of Surveys  
2007.8.6

SCALE 1:500

Distances are in Metres

○ Denotes Iron put except otherwise stated.

Bearings are Cassini Grid based on Solar Observations.

PLAN of a Parcel of land coloured pink in the Ward of Savana Grande  
Containing five hundred and ten point nine square metres.

Surveyed by me, with due authority, on July, 6th. 2006 for Nazir Mohammed & Lileah Mohammed.  
In accordance with Regulation 25(1) of the Land Surveyors' Regulations 1998,  
I certify that this plan is correct.

Checked by

*[Signature]*

Entered

Trinidad & Tobago Land Surveyor 28<sup>th</sup> July 2006

PATH = EV700 D:\Drawings06\N.Mohammed & L.Mohammed.dwg.