

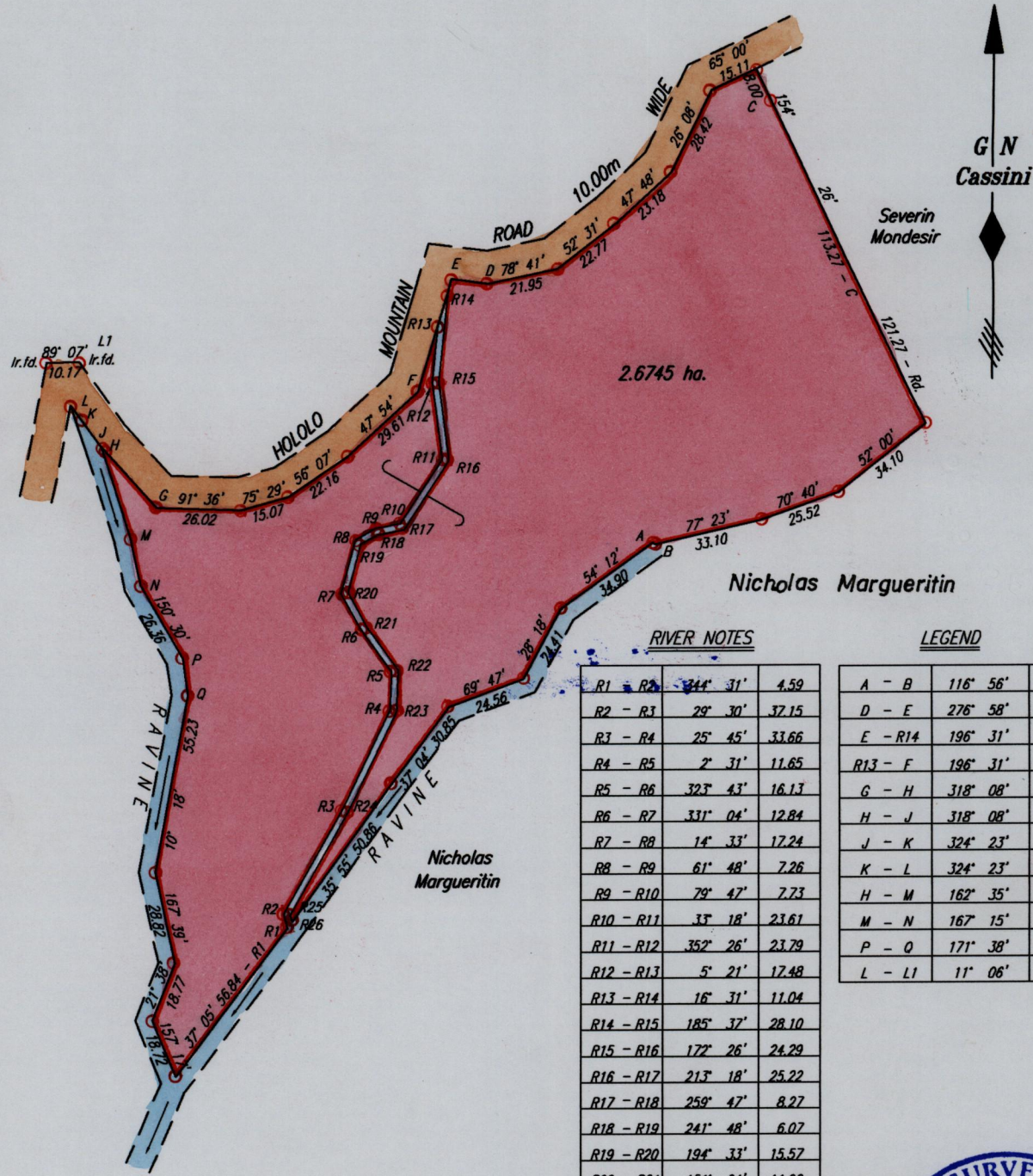
1385

33

Process FD# 7785

Cadastral Sheet A.15.P. 13E
Ward of St. Anns
County of St. George

To be brought under the provisions of the Real Property Ordinance



RIVER NOTES

R1 - R2	344' 31"	4.59
R2 - R3	29' 30"	37.15
R3 - R4	25' 45"	33.66
R4 - R5	2' 31"	11.65
R5 - R6	323' 43"	16.13
R6 - R7	331' 04"	12.84
R7 - R8	14' 33"	17.24
R8 - R9	61' 48"	7.26
R9 - R10	79' 47"	7.73
R10 - R11	33' 18"	23.61
R11 - R12	352' 26"	23.79
R12 - R13	5' 21"	17.48
R13 - R14	16' 31"	11.04
R14 - R15	185' 37"	28.10
R15 - R16	172' 26"	24.29
R16 - R17	213' 18"	25.22
R17 - R18	259' 47"	8.27
R18 - R19	241' 48"	6.07
R19 - R20	194' 33"	15.57
R20 - R21	151' 04"	11.92
R21 - R22	143' 43"	16.71
R22 - R23	182' 31"	12.76
R23 - R24	205' 45"	34.07
R24 - R25	209' 30"	36.45
R25 - R26	164' 31"	2.18
R26 - R1	216' 09"	2.55

LEGEND

A - B	116' 56"	1.13
D - E	276' 58"	11.38
E - R14	196' 31"	3.98
R13 - F	196' 31"	21.14
G - H	318' 08"	25.29
H - J	318' 08"	1.11
J - K	324' 23"	8.13
K - L	324' 23"	6.65
H - M	162' 35"	29.66
M - N	167' 15"	14.49
P - Q	171' 38"	11.38
L - L1	11' 06"	13.74

Approved *Tyrone Perry*
Director of Surveys
2007-7-27



○ Denotes Iron put except where otherwise stated

Bearings are Cassini Grid based on Solar Observations

PLAN of a Parcel of land coloured pink in the Ward of St. Anns

Containing two point six seven four five hectares

Surveyed by me, with due authority, on the 24th, 25th & 26th April 2000 for Dennis De Souza

In accordance with Regulation 25 (1) of The Land Surveyors' Regulations 1998,

I certify that this plan is correct.

Checked by *Dennis De Souza* 2007-7-27 TTLS

Entered on Trinidad & Tobago Land Surveyor 15th September 2004
C:\LESS 2004\DE SOUZA, DENNIS\037

SCALE 1:2000

Distances are in METRES