

1385

63

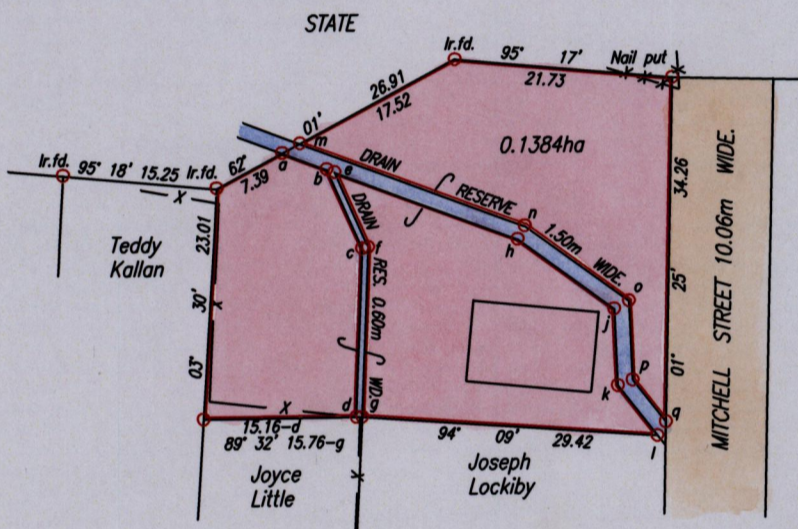
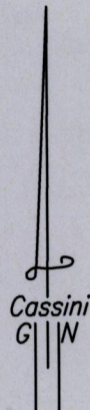
Process ID # 19818

1385/618

To be brought under the Provisions of the Real Property Ordinance

Vide Bk. 1056 fol 182  
Vide Plan EB 174

Cadastral Sheet G.7.I. 63A  
Ward of Siparia  
County of St. Patrick.  
St. Mary's Village



LEGEND		
LINE	BEARING	DISTANCE
ab	110° 36'	4.71
bc	156° 17'	8.66
cd	182° 16'	16.74
be	110° 36'	0.84
ef	156° 17'	8.21
fq	182° 16'	16.85
eh	110° 36'	19.45
hj	126° 15'	11.87
jk	177° 41'	7.64
kl	142° 02'	6.33
am	62° 01'	2.00
mn	110° 36'	23.88
no	126° 15'	12.80
op	177° 41'	7.88
pq	142° 02'	5.31
lq	32° 24'	1.59

Approved

*[Signature]*  
Director of Surveys  
2107.05.08

-X-X-X- Denotes FENCE

o Denotes Iron put except where otherwise stated

Bearings are Cassini Grid based on Solar Observations

PLAN of a Parcel of land coloured pink in the Ward of Siparia  
Containing zero point one three eight four hectare.

Surveyed by me, with due authority, on 13th. November, 2006 for Leslie Lockiby  
In accordance with Regulation 25 (1) of the Land Surveyors' Regulations 1998,  
I certify that this plan is correct.

Checked by

*[Signature]* 22/5/07

*[Signature]*

Entered on

Trinidad & Tobago Land Surveyor. . . 24<sup>th</sup> March . . . 2007.

PATH = EV700 D:\Drawings07\Lockiby.dwg

SCALE 1:750

Distances are in metres

