

1385

68

Process FP # 79801

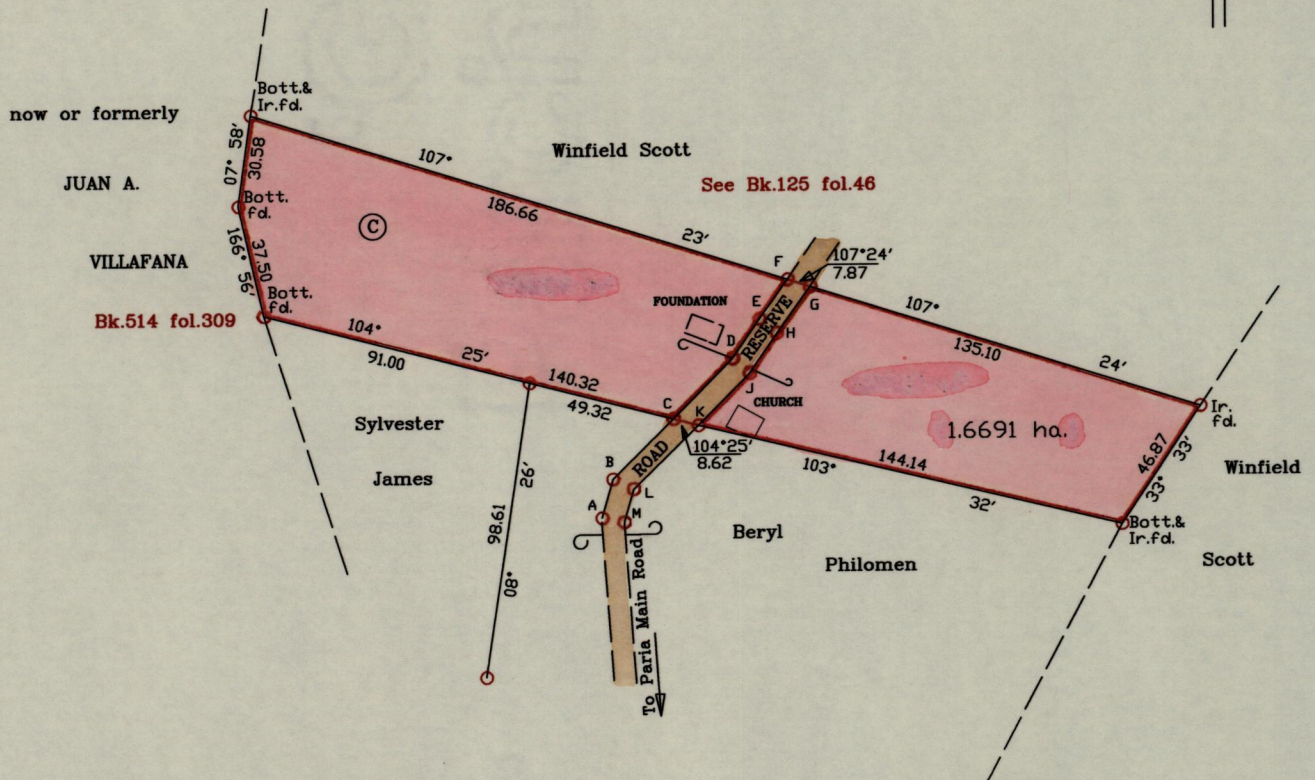
Cadastral Sheet B.3.P.  $\frac{4A}{4/d}$  &  $\frac{4B}{3/c}$

Ward of Blanchisseuse .

County of St. George .

To be brought under the provisions of the Real Property Ordinance.

G N Cassini



A-B	15° 49'	13.42
B-C	45° 31'	28.26
C-D	44° 38'	29.02
D-E	34° 40'	15.77
E-F	35° 33'	16.03
F-G	107° 24'	7.87
G-H	215° 35'	18.89
H-J	214° 38'	15.97
J-K	224° 43'	24.20
K-L	225° 56'	30.14
L-M	195° 49'	11.42

Approved *Terra Cassini*  
 Director of Surveys  
 2007-05-18

SCALE: 1/2500

○ Denotes iron put unless otherwise stated  
 Bearings based on solar observations  
 Note : To obtain compass bearing subtract 00 minutes Distances are in metres.

PLAN of a parcel of land coloured pink in the Ward of Blanchisseuse  
 Containing one point six six nine one hectares .

Surveyed by me, with due authority, on 19th July, 2001 and 16th October, 2003 for *John Isaac & Babsy Isaac*  
 In accordance with regulation 25 (1) of the Land Surveyors' Regulations 1998,

I certify that this plan is correct.

Checked by *Winston J. Sylvester*

Entered on .....

Trinidad & Tobago Land Surveyor..... 16-02-06

23/7/01