

1385

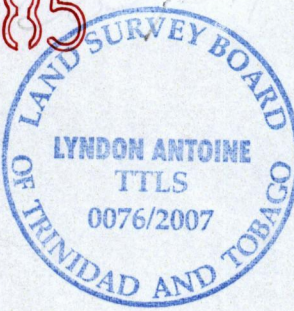
54

Process ID # 79766

To be brought under the provisions of the REAL PROPERTY ORDINANCE

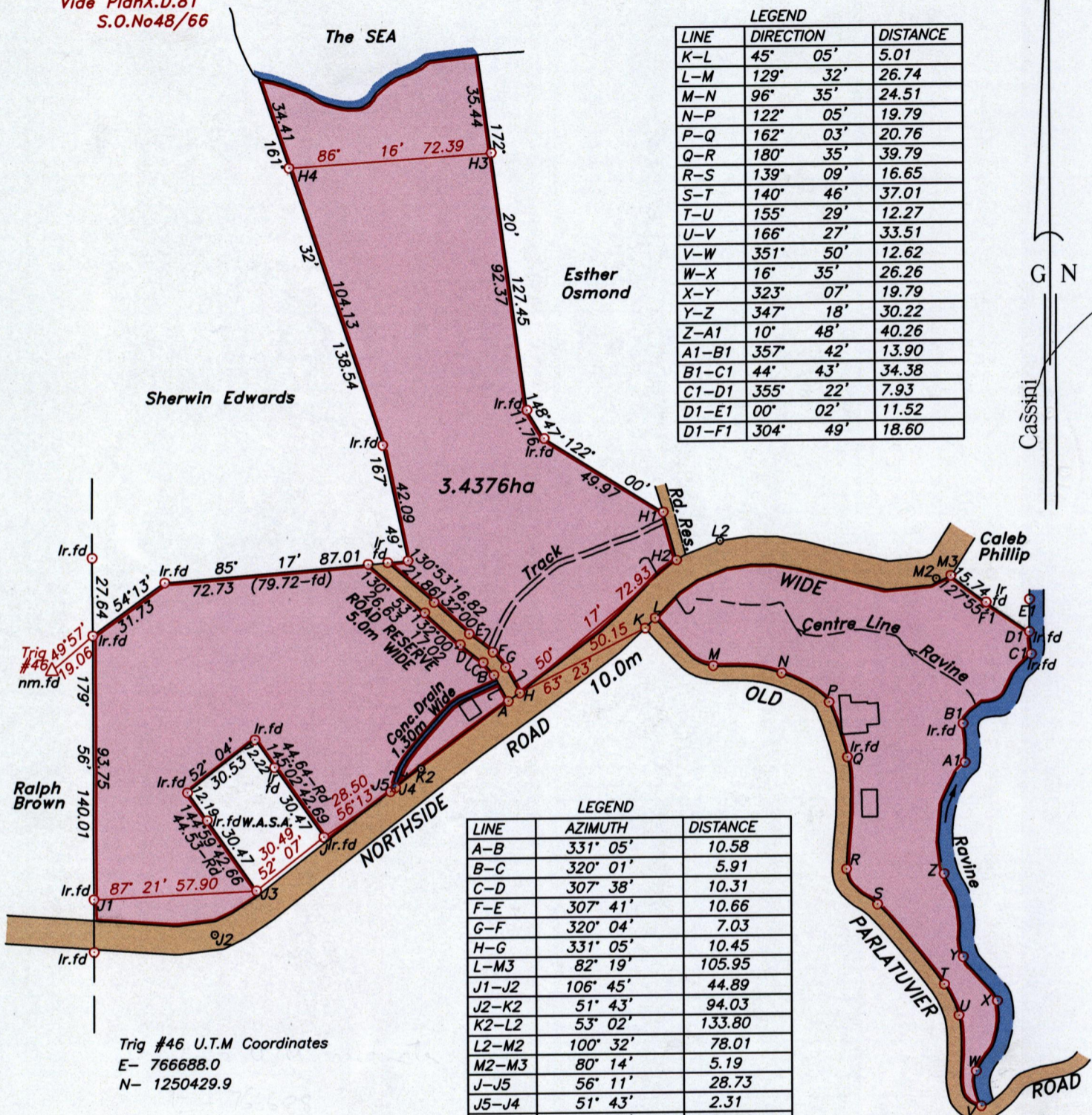
U.P.R.N No:.....

PALATUVIER



Cadastral Sheet 1.8.L. Ward of Tobago Parish of St. John.

Vide Plan X.D.81 S.O.No48/66



LEGEND

| LINE  | DIRECTION | DISTANCE |
|-------|-----------|----------|
| K-L   | 45° 05'   | 5.01     |
| L-M   | 129° 32'  | 26.74    |
| M-N   | 96° 35'   | 24.51    |
| N-P   | 122° 05'  | 19.79    |
| P-Q   | 162° 03'  | 20.76    |
| Q-R   | 180° 35'  | 39.79    |
| R-S   | 139° 09'  | 16.65    |
| S-T   | 140° 46'  | 37.01    |
| T-U   | 155° 29'  | 12.27    |
| U-V   | 166° 27'  | 33.51    |
| V-W   | 351° 50'  | 12.62    |
| W-X   | 16° 35'   | 26.26    |
| X-Y   | 323° 07'  | 19.79    |
| Y-Z   | 347° 18'  | 30.22    |
| Z-A1  | 10° 48'   | 40.26    |
| A1-B1 | 357° 42'  | 13.90    |
| B1-C1 | 44° 43'   | 34.38    |
| C1-D1 | 355° 22'  | 7.93     |
| D1-E1 | 00° 02'   | 11.52    |
| D1-F1 | 304° 49'  | 18.60    |

LEGEND

| LINE  | AZIMUTH  | DISTANCE |
|-------|----------|----------|
| A-B   | 331° 05' | 10.58    |
| B-C   | 320° 01' | 5.91     |
| C-D   | 307° 38' | 10.31    |
| F-E   | 307° 41' | 10.66    |
| G-F   | 320° 04' | 7.03     |
| H-G   | 331° 05' | 10.45    |
| L-M3  | 82° 19'  | 105.95   |
| J1-J2 | 106° 45' | 44.89    |
| J2-K2 | 51° 43'  | 94.03    |
| K2-L2 | 53° 02'  | 133.80   |
| L2-M2 | 100° 32' | 78.01    |
| M2-M3 | 80° 14'  | 5.19     |
| J-J5  | 56° 11'  | 28.73    |
| J5-J4 | 51° 43'  | 2.31     |
| J4-A  | 52° 54'  | 50.66    |
| A-H   | 55° 23'  | 5.02     |
| J5-B  | 42° 01'  | 55.71    |
| H1-H2 | 164° 41' | 17.78    |

Trig #46 U.T.M Coordinates  
E- 766688.0  
N- 1250429.9

Approved [Signature] Director of Surveys 2007-04-05

Denotes iron put, except otherwise stated.

Bearings are grid based on solar observations

Distances are in metres

SCALE 1:2000

PLAN of a parcel of land coloured pink in the Ward of Tobago Containing three point four three seven six hectares.

Surveyed by me, with due authority on 21st February 2005 for Stephen Alexander.

In accordance with Regulation 25 (1) of the Land Surveyors' Regulations 1998, I certify that this plan is correct.

Checked by M.M. 12/2/07 Entered .....

[Signature] Lyndon Antoine 22nd January 2007. Path: \\aasl-server\j05survey\0133\saalexander.dwg

Trinidad & Tobago Land Surveyor..... 2007.

