

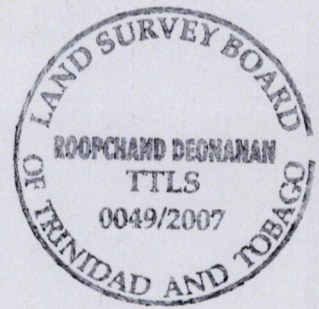
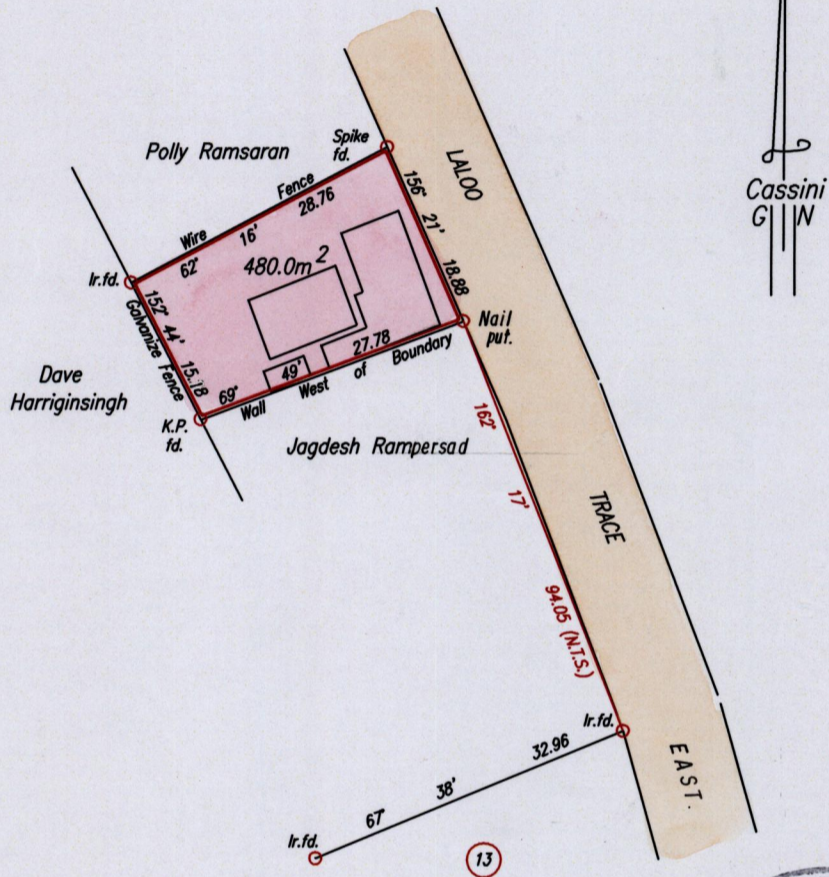
To be brought under the Provisions of the Real Property Ordinance

Vide Bk.1102 fols 170, 171 & 172

Cadastral Sheet D.22.C.  $\frac{43F}{3/d}$   
Ward of Pointe - a - Pierre.

County of Victoria

UNION VILLAGE



Approved *[Signature]*  
 Director of Surveys  
 2007-03-12

SCALE 1:750  
 Distances are in metres

Bearings are Cassini Grid based on Solar Observations  
 PLAN of a Parcel of land coloured pink in the Ward of Pointe - a - Pierre.  
 Containing four hundred and eighty point zero square metres.  
 Surveyed by me, with due authority, on 29th. November, 2006 for Mohan Rampersad & Phoula Rampersad.

In accordance with Regulation 25 (1) of the Land Surveyors' Regulations 1998,  
 I certify that this plan is correct.

Checked by *[Signature]* 2007-3-5 ..... *[Signature]*

Entered on ..... Trinidad & Tobago Land Surveyor. *7<sup>th</sup>* December 2006.  
 PATH = EV700 D:\Drawings06\Rampersad.dwg.