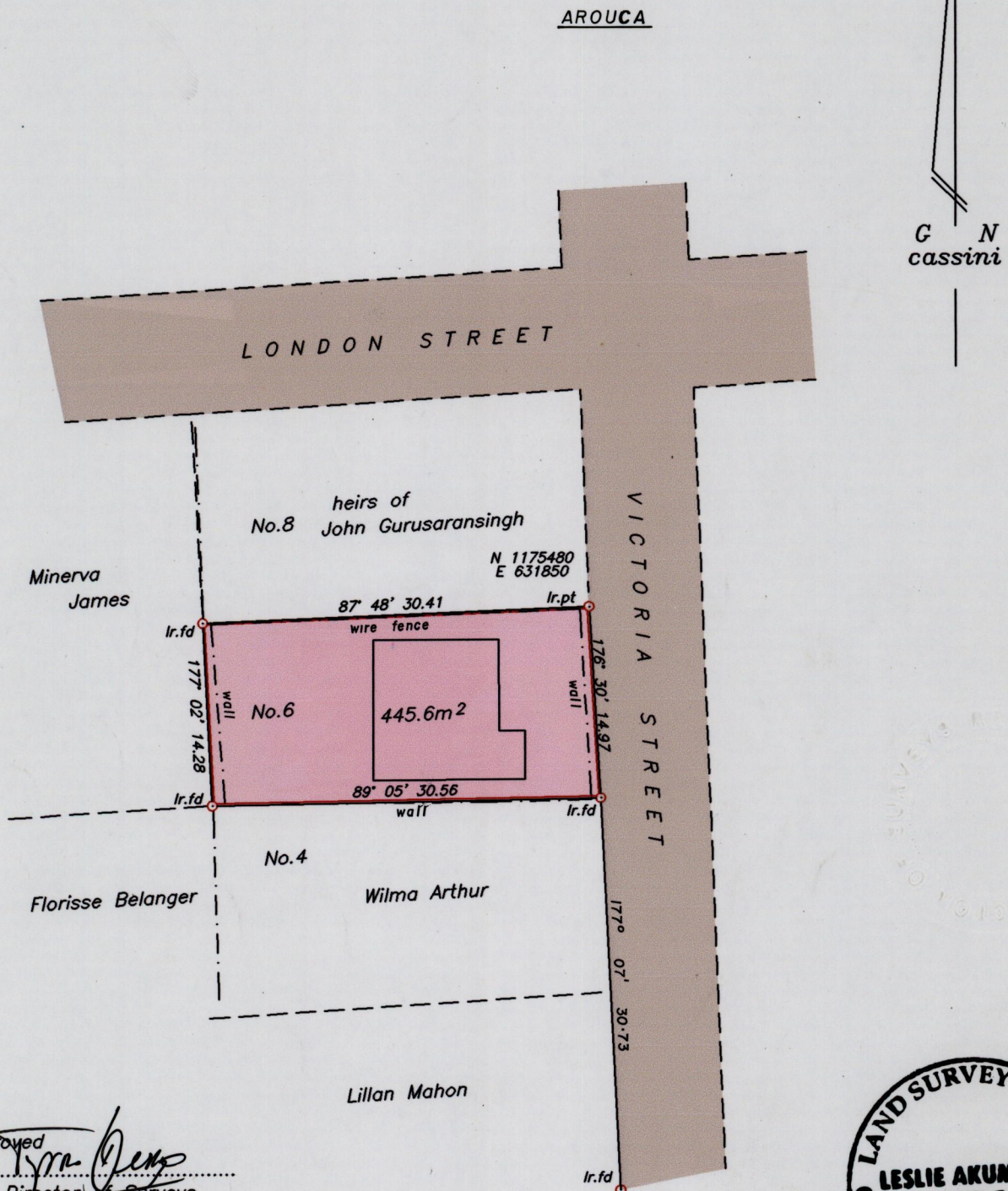


To be brought under the provisions of the Real Property Ordinance.

Cadastral Sheet B.24.A. $\frac{24B}{1/d}$
Ward of Tacarigua
County of St. George



Approved
[Signature]
 Director of Surveys
 2007-02-13



Co-ordinates are U.T.M. (approx.) scaled from 1/10,000 sheet
 Bearings are Cassini grid based on Magnetic Needle
 Note: To obtain compass bearings add 6 minutes.

--- Denotes fence
 See: Bks. 1038/162, 784/165
 SCALE 1/500
 Distances are in metres

PLAN of a Parcel of land coloured pink in the Ward of Tacarigua
 Containing four four five point six square metres

Surveyed by me, with due authority, on 21st January 2004 & 30th December 2005
 for Wilfred Payne, Wendell Payne and Nestor Payne
 In accordance with Regulation 25 (1) of the Land Surveyors' Regulations 1998,
 I certify that this plan is correct.

Checked by *[Signature]*
 Entered..... Trinidad & Tobago Land Surveyor *[Signature]* 30th December 2005