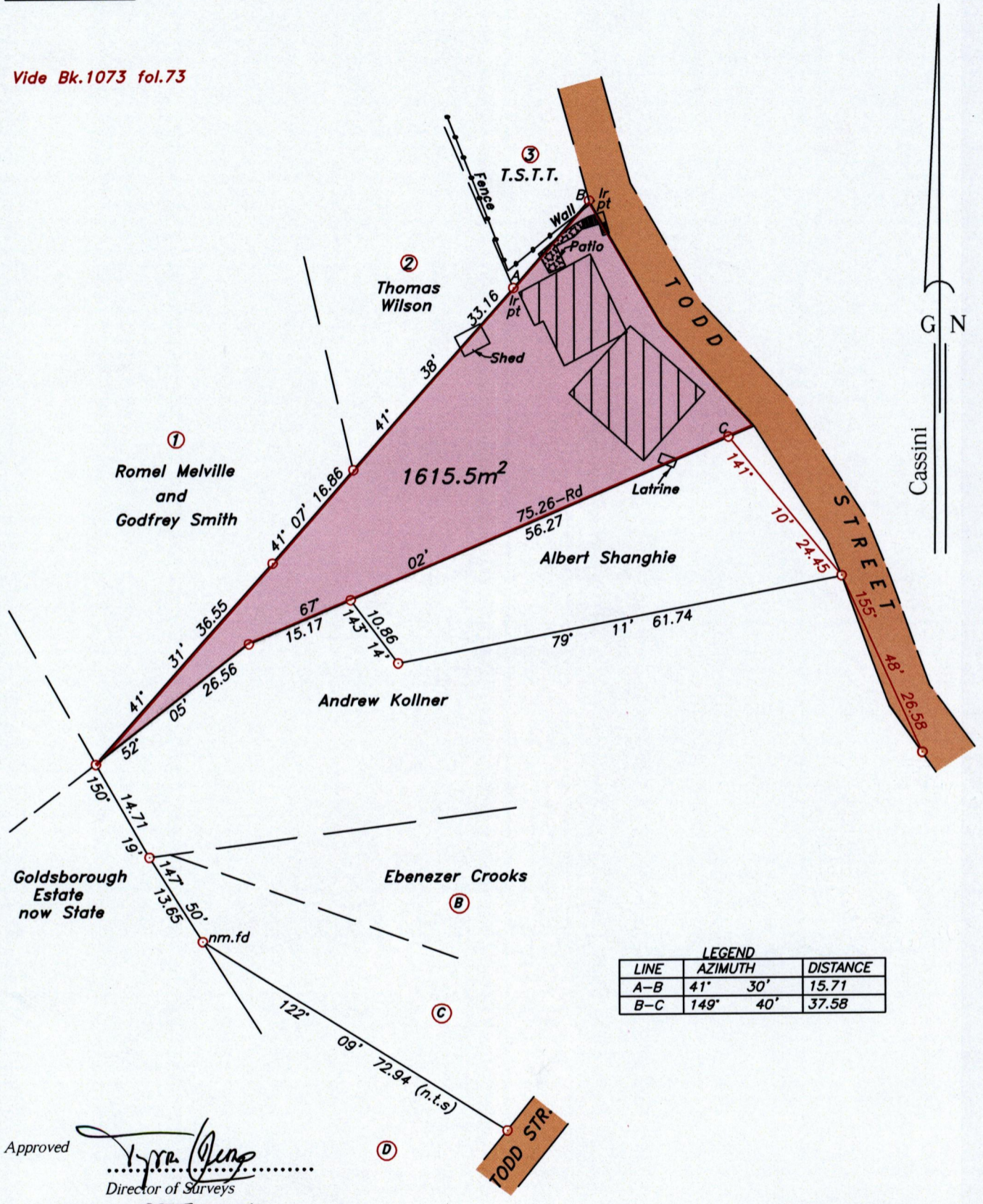


To be brought under the provisions of the REAL PROPERTY ORDINANCE

Cadastral Sheet I.19.B. Ward of Tobago Parish of St. Mary

U.P.R.N..... PEMBROKE

Vide Bk.1073 fol.73



LINE	AZIMUTH	DISTANCE
A-B	41° 30'	15.71
B-C	149° 40'	37.58

Approved [Signature] Director of Surveys 2007-02-06

Denotes iron found, except otherwise stated.

SCALE 1:750

Bearings are grid based on solar observations

Distances are in metres

PLAN of a parcel of land coloured pink in the Ward of Tobago Containing one thousand six hundred and fifteen point five square metres Surveyed by me, with due authority on 21st September 2005 for Wilbert Kent In accordance with Regulation 25 (1) of the Land Surveyors' Regulations 1998, I certify that this plan is correct.

Checked by... Entered .....

Lyndon Antoine 15th January 2007. Path: \\win\R\K039\WKENT.DWG

Trinidad & Tobago Land Surveyor..... 2007.

