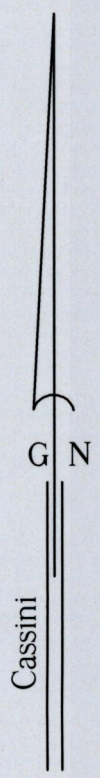
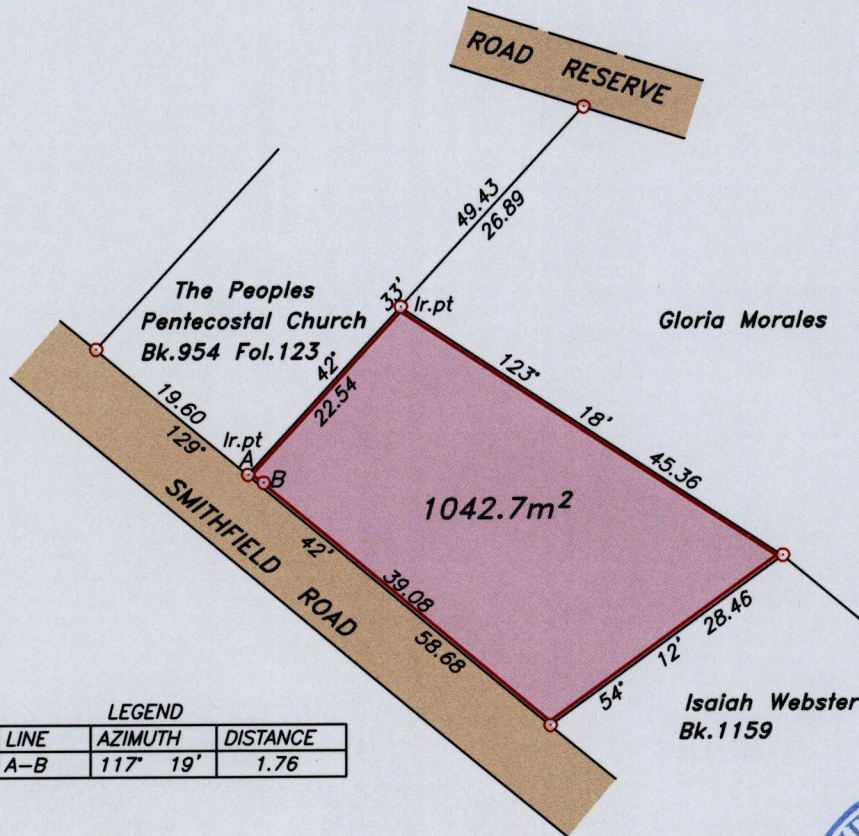


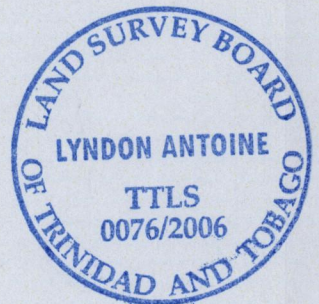
U.P.R.N.....  
To be brought under the provisions  
of the REAL PROPERTY ORDINANCE  
SCARBOROUGH

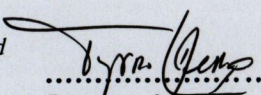
Cadastral Sheet *I.17.K*  $\frac{2G}{3/c/4}$   
Ward of *Tobago*  
Parish of *St. Andrew*



LEGEND

LINE	AZIMUTH	DISTANCE
A-B	117° 19'	1.76



Approved   
.....  
Director of Surveys  
2007-02-06

○ Denotes iron found, except otherwise stated.

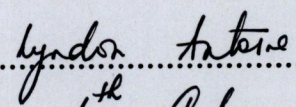
SCALE 1:750

Bearings are grid based on solar observations

Distances are in metres

PLAN of a parcel of land coloured *pink* in the Ward of *Tobago*  
Containing *one thousand and forty two point seven square metres*.  
Surveyed by me, with due authority on *27th June 2006* for *Isaiah Webster*  
In accordance with Regulation 25 (1) of the Land Surveyors' Regulations 1998, I certify that this plan is correct.

Checked by.....  
Entered.....

  
.....  
*6<sup>th</sup> July*

Trinidad & Tobago Land Surveyor.....2006.

path: \\aasl-server\06survey\w120\iwebster.dwg