

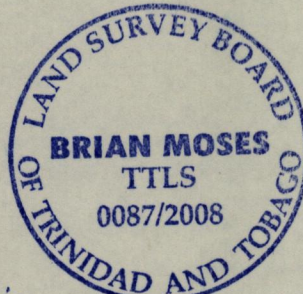
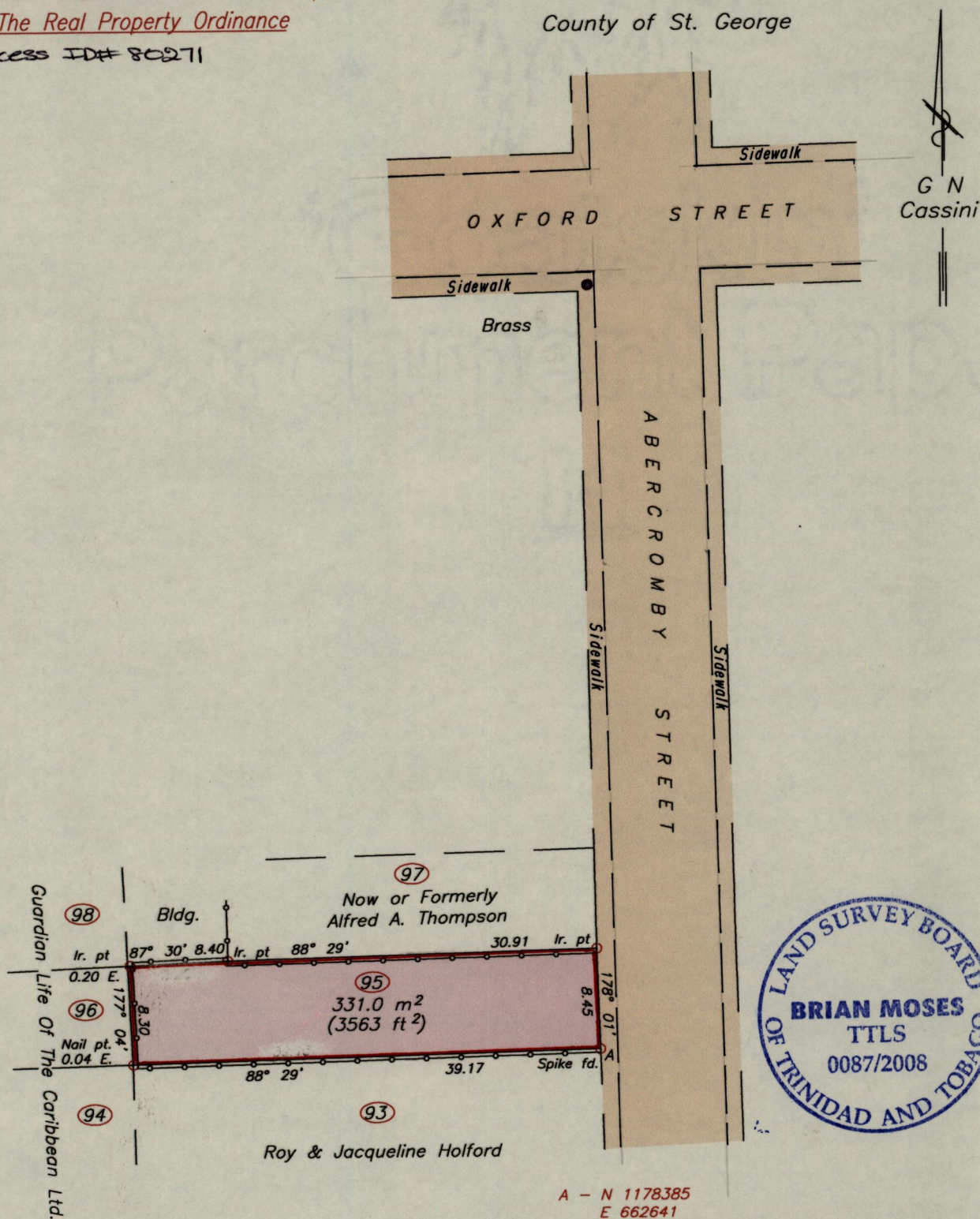
U.P.R.N.....

Cadastral Sheet A.20.J.  $\frac{13D}{4/d}$

To be brought under the provisions of The Real Property Ordinance

City of Port of Spain  
County of St. George

Process ID# 80271



A - N 1178385  
E 662641  
UTM Zone 20 Naparima Co-ordinates  
Derived From Hand-Held GPS (+/-5 m)  
A - Brass 358° 18' 140.52 (Not To Scale)

Approved *[Signature]*  
Director of Surveys  
2008/11/27

Wall

SCALE 1:500  
Distances are in METRES

Bearings are Cassini Grid based on Solar Observations

Plan of a Parcel of land coloured pink in the City of Port of Spain  
Containing three three one point zero square metres  
Surveyed by me, with due authority, on the 29th December, 2007 for Nelister Bellot  
In accordance with Regulation 25 (1) of the Land Surveyors' Regulations 1998,  
I certify that this Plan is correct.

Checked by *[Signature]* *[Signature]* T.T.L.S.  
Entered on ..... Trinidad & Tobago Land Surveyor *17th April* 2008