

Process ~~IT#~~ 80262
 TO BE BROUGHT UNDER THE PROVISIONS OF
 THE REAL PROPERTY ORDINANCE

U.P.I.N. No.

Vide
Bk 439:170
Bk 435:11
Plan K.D.16

"348 Cap-de-Ville Erin Road Buenos Ayres"

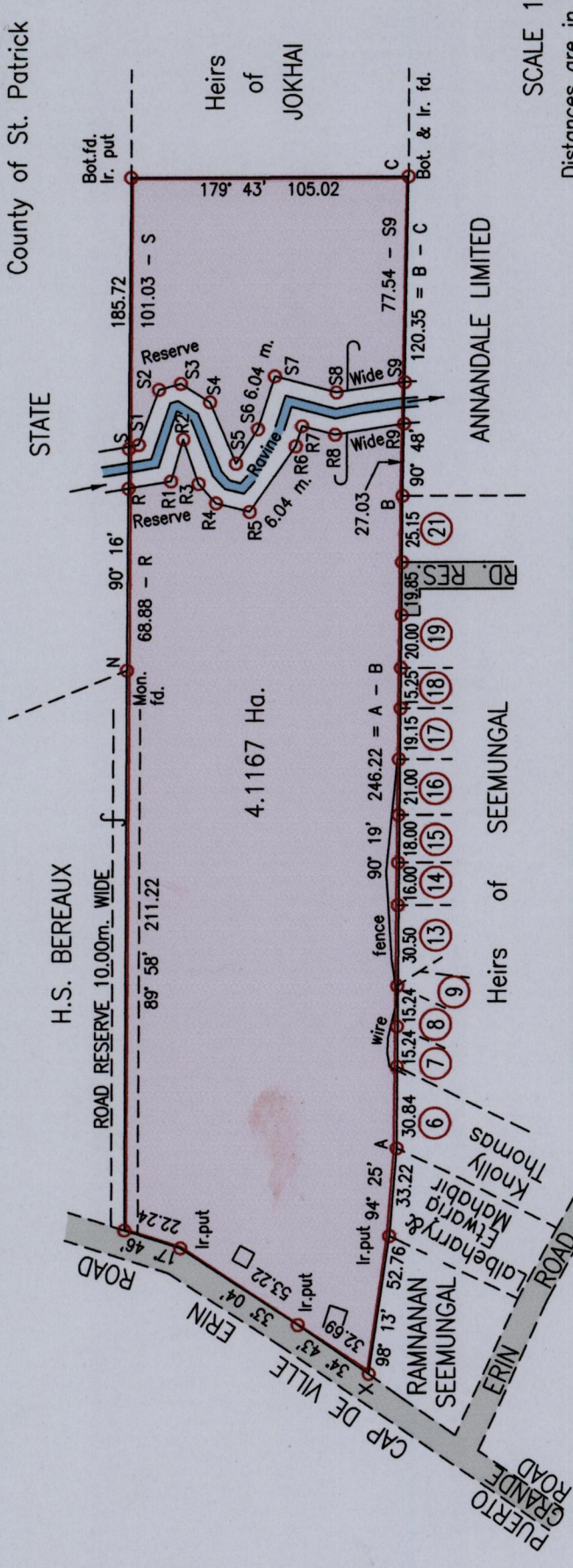
Cadastral Sheet Z2A / 4/c, F.19.P.

Ward of Erin

County of St. Patrick

Grid North
 Cassini

1385



SCALE 1:2500

Distances are in Metres

LINE	BEARING	DIST.
R - R1	170° 31'	16.26
R1 - R2	106° 09'	16.47
R2 - R3	250° 50'	17.78
R3 - R4	227° 49'	9.91
R4 - R5	194° 25'	13.08
R5 - R6	125° 13'	30.18
R6 - R7	107° 43'	7.97
R7 - R8	194° 51'	13.25
R8 - R9	171° 01'	26.17
R - S	90° 16'	15.81
S - S1	170° 31'	3.84
S1 - S2	110° 18'	22.19
S2 - S3	164° 54'	8.53
S3 - S4	212° 28'	13.03
S4 - S5	246° 56'	25.19
S5 - S6	122° 41'	15.38
S6 - S7	107° 43'	20.96
S7 - S8	194° 51'	24.14
S8 - S9	171° 40'	26.10
R9 - S9	90° 48'	15.78

E	644521
X	N 1116678

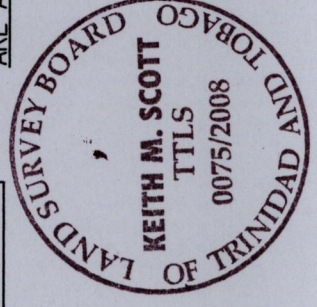
Reliability Error ± 2.0 m.

Coordinates are WGS84, UTM Zone 20 based on
 Garmin GPSmap 60CSx Handheld GPS Receiver

○ Denotes Iron Found unless otherwise stated

NOTE: IRONS AT R TO R9 AND IRONS AT S TO S9

ARE ALL IRONS PUT



Approved

 Director of Surveys
 2008/11/12

Bearings are Cassini Grid based on Solar Obs.

Plan of a Parcel of land coloured pink in the Ward of Erin

Containing four point one one six seven hectares

Surveyed by me, with due authority, on 7th October 2006 for Ivan Aguilera

In accordance with Regulation 25(1) of the Land Surveyors' Regulations 1998,

I certify that this plan is correct.

Checked by
 19/11/08

Entered on
 25th August 2008
 Trinidad & Tobago Land Surveyor

211