

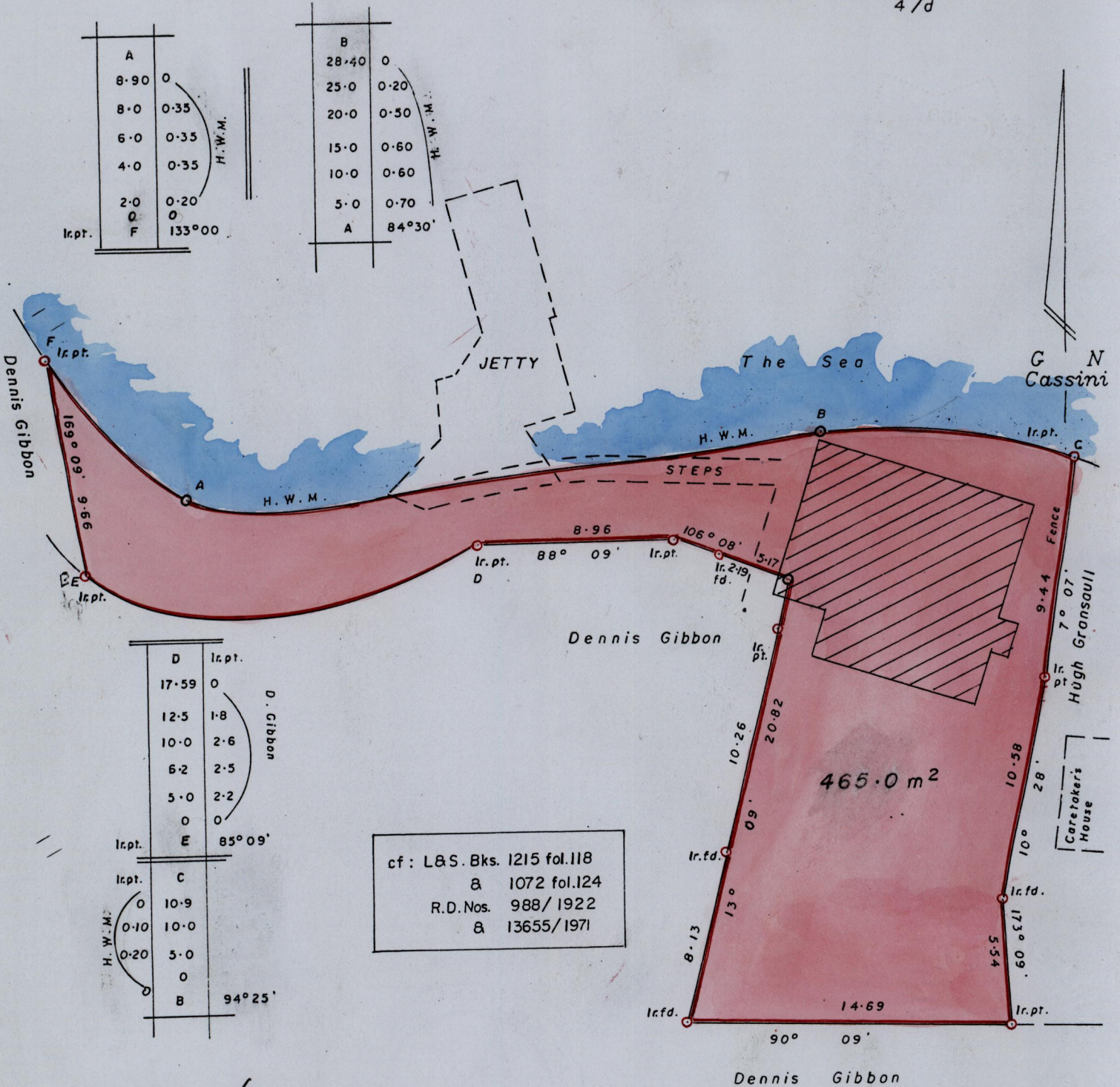
To be brought under the provisions of the Real Property Ordinance

Process ~~DPH~~ 80211

Ward of Diego Martin

County of St. George

Cadastral Sheet A.18. $\frac{12A8D}{4/d}$



A	8-90	0
	8-0	0-35
	6-0	0-35
	4-0	0-35
	2-0	0-20
	0	0
Ir.pt. F	0	133°00'

B	28-40	0
	25-0	0-20
	20-0	0-50
	15-0	0-60
	10-0	0-60
	5-0	0-70
A	0	84°30'

D	17-59	0
	12-5	1-8
	10-0	2-6
	6-2	2-5
	5-0	2-2
	0	0
Ir.pt. E	0	85°09'

Ir.pt. C	0	10-9
	0-10	10-0
	0-20	5-0
	0	0
B	0	94°25'

cf : L&S. Bks. 1215 fol.118
 & 1072 fol.124
 R.D.Nos. 988/1922
 & 13655/1971

Approved
[Signature]
 Director of Surveys
 2008-10-24

○ Indicates Traverse Stations.

Note: To obtain compass bearings subtract 9 minutes.

SCALE : 1 / 250

Distances are in metres

PLAN of a Parcel of land coloured pink in the Ward of Diego Martin
 Containing four hundred and sixty five point zero square metres

Surveyed by me with due authority in 24th April 2007 for Brian Hackshaw

In accordance with Reg 25(1) of the Land Surveyors' Regulations 1998 ,

I certify that this plan is correct.

Checked by *[Signature]* 14/9/08

Entered.....

Trinidad & Tobago Land Surveyor... 17th June 2008

