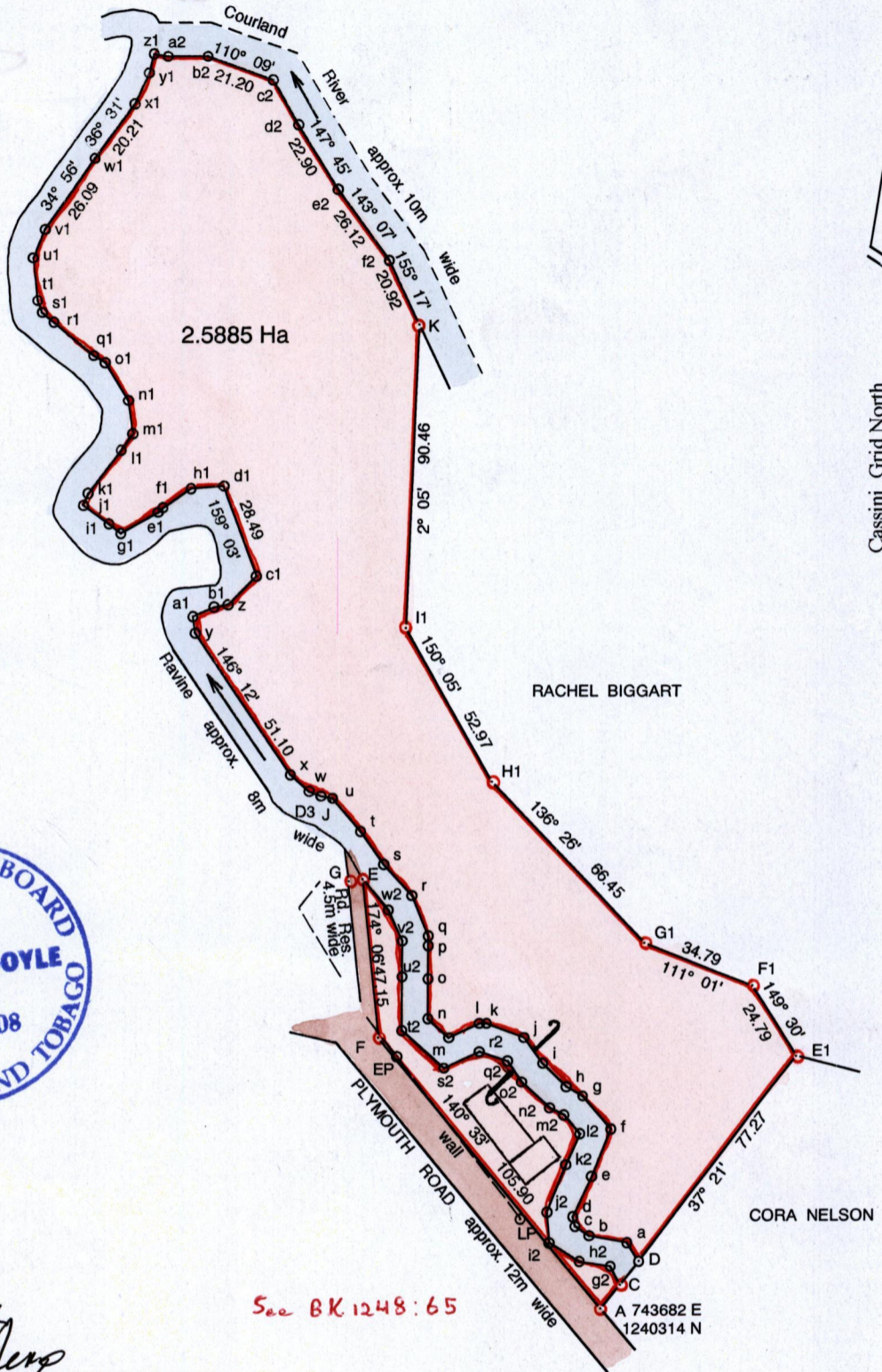


Process ID# 80177

To be brought under the Provisions of the Real Property Ordinance



Approved *[Signature]*  
 Director of Surveys  
 2008. 9.16

SCALE 1 : 2000

Distances are in metres

- Denotes Iron Found unless otherwise stated
- Denotes traverse station unless otherwise stated

Bearings are Cassini Grid based on Solar Observations

UTM coordinates obtained from Garmin Handheld GPS; accuracy 6m Naparima Datum

Vide: Bk. 1248 Fol. 65

PLAN of a Parcel of land coloured pink in the Ward of Tobago

Containing two point five eight eight five hectares

Surveyed by me, with due authority, on 13th June 2008 at the request of Rubina Adams

In accordance with regulation 25 (1) of the Land Surveyors' Regulations 1998,

I certify that this plan is correct.

Checked by *[Signature]*

Entered *[Signature]*  
13.3.2014

*[Signature]*  
Trinidad & Tobago Land Surveyor ..... 2008

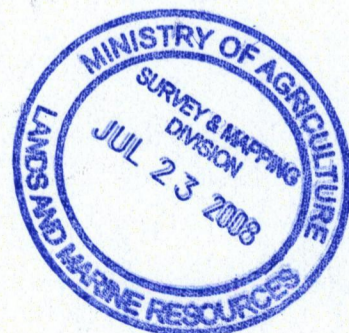
"A"

This is the Survey Plan annexed and marked "A" referred to in the declaration of RUBINA ADAMS, declared to before me this 21<sup>st</sup> day of July, 2008

*[Signature]*  
**CEWILLE PENNON**  
Commissioner of Affidavits  
Commissioner of Affidavits  
Tobago

Line	Brg.	Dist.
A - C	37° 20'	9.49
C - g2	329° 29'	6.32
g2 - h2	280° 56'	9.35
h2 - i2	302° 16'	10.24
i2 - j2	351° 06'	8.81
j2 - k2	23° 16'	15.55
k2 - l2	22° 56'	10.29
l2 - m2	318° 17'	7.10
m2 - n2	301° 40'	4.91
n2 - o2	311° 20'	11.67
o2 - q2	327° 57'	7.61
q2 - r2	287° 09'	8.72
r2 - s2	245° 59'	12.18
s2 - t2	311° 54'	17.04
u2 - v2	359° 42'	10.65
v2 - w2	335° 43'	9.96
w2 - E	320° 30'	12.20
D - a	329° 10'	6.66
a - b	280° 57'	11.44
b - c	302° 18'	5.09
c - d	351° 05'	2.88
d - e	23° 28'	13.34
e - f	22° 46'	15.30
f - g	318° 19'	13.32
g - h	301° 33'	5.42
h - i	311° 20'	9.81
i - j	327° 56'	9.42
j - k	289° 25'	12.49
k - l	274° 47'	2.27
l - m	245° 58'	10.01
m - n	311° 55'	8.24
n - o	0° 27'	12.25
o - p	1° 30'	9.71
p - q	353° 14'	2.71

Line	Brg.	Dist.
q - r	335° 45'	12.73
r - s	320° 21'	12.70
s - t	323° 50'	12.03
t - u	319° 10'	12.52
u - D3	285° 08'	3.76
D3 - w	292° 11'	3.69
w - x	308° 42'	7.85
y - a1	345° 51'	4.80
a1 - b1	65° 44'	7.38
b1 - z	80° 58'	3.85
z - c1	45° 48'	12.52
d1 - h1	265° 47'	10.01
h1 - f1	235° 21'	10.33
f1 - e1	230° 16'	1.77
e1 - g1	239° 20'	12.94
g1 - i1	307° 17'	4.58
i1 - j1	307° 40'	9.90
j1 - k1	21° 39'	3.87
k1 - l1	38° 30'	16.48
l1 - m1	34° 29'	5.59
m1 - n1	353° 13'	9.65
n1 - o1	326° 32'	13.61
o1 - q1	306° 31'	4.42
q1 - r1	308° 17'	15.19
r1 - s1	314° 51'	4.46
s1 - t1	338° 14'	3.74
t1 - u1	352° 56'	12.82
u1 - v1	23° 10'	8.75
x1 - y1	24° 00'	10.26
y1 - z1	11° 04'	5.65
z1 - a2	101° 12'	4.79
a2 - b2	88° 09'	11.88
c2 - d2	150° 38'	15.01
t2 - u2	00° 25'	15.81



1385/181