

1385

1880

Ward of Pointe - a - Pierre

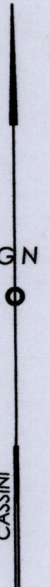
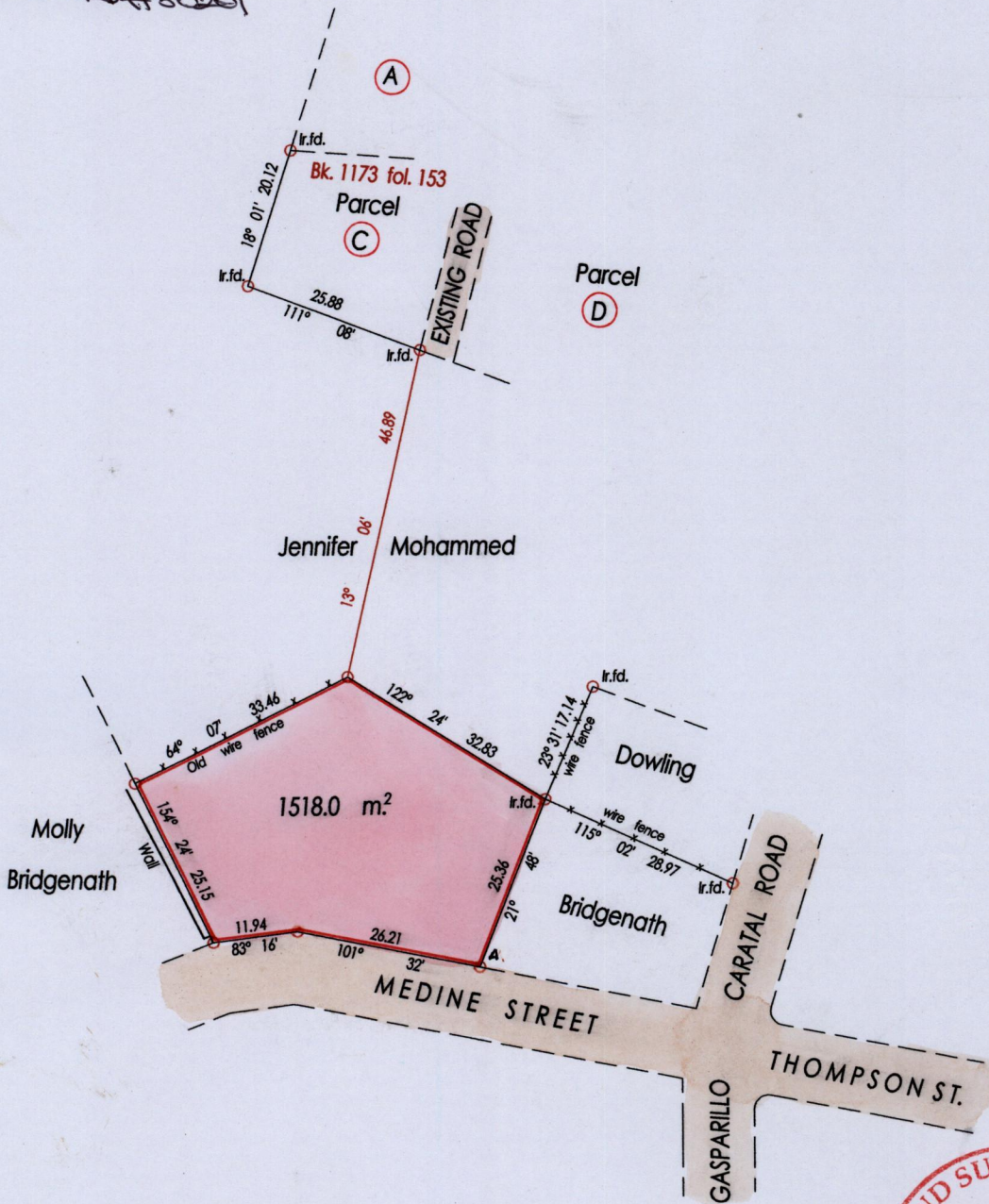
County of Victoria

Cadastral Sheet D. 22 I. 53 C.

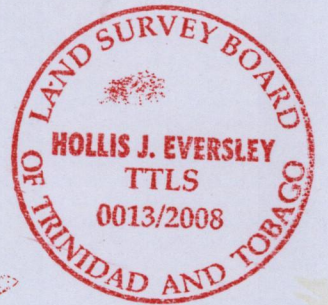
2/c

To be Brought under the Provisions of
The Real Property Ordinance

Access to Road



A = N. 1141798 E. 672603
U.T.M. ZONE 20 W.G.S. 84
Hand Held G.P.S.



○ Denotes Iron Put Except Stated Otherwise

SCALE 1 : 1000

Approved

[Signature]
Director of Surveys
2008.9.15

Bearings are Cassini Grid based on Solar Observations Distances are in Metres
 PLAN of a Parcel of land coloured pink in the Ward of Pointe - a - Pierre
 Containing one thousand five hundred and eighteen sq. metres
 Surveyed by me, with due authority in, 30th May 2008 for Nigel Castro
 In accordance with Regulation 25 (1) of the Land Surveyors' Regulations 1998,
 I certify that this plan is correct.

Entered on.....

Checked by *[Signature]* *[Signature]* 2008
 R-27/08/08 Trinidad & Tobago Land Surveyor.....2008