

1385

179

To be brought under the provisions of the Real Property Ordinance.

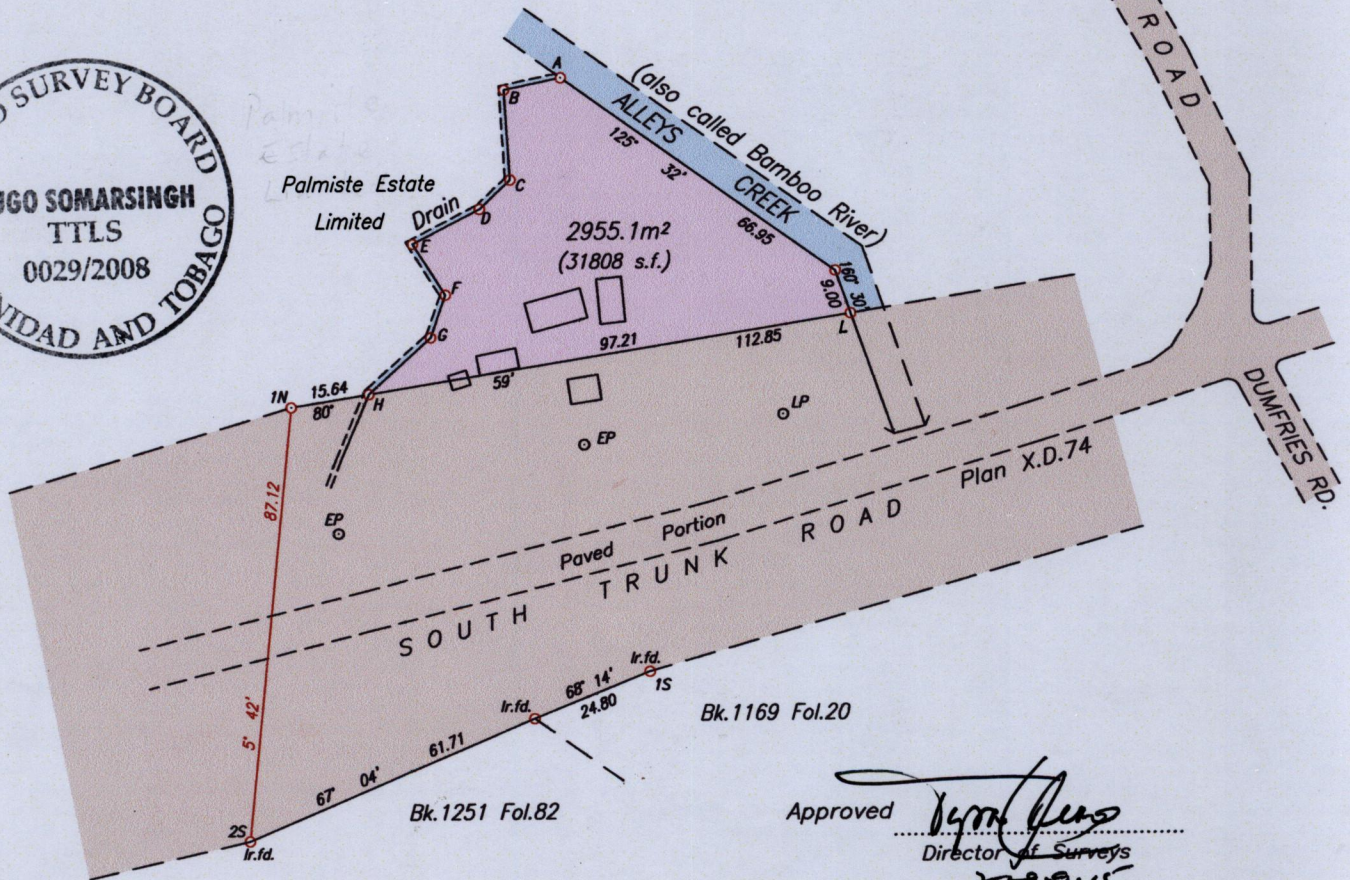
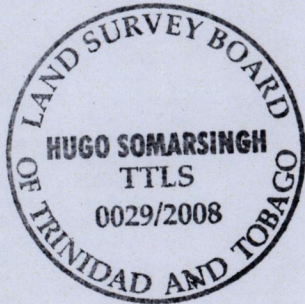
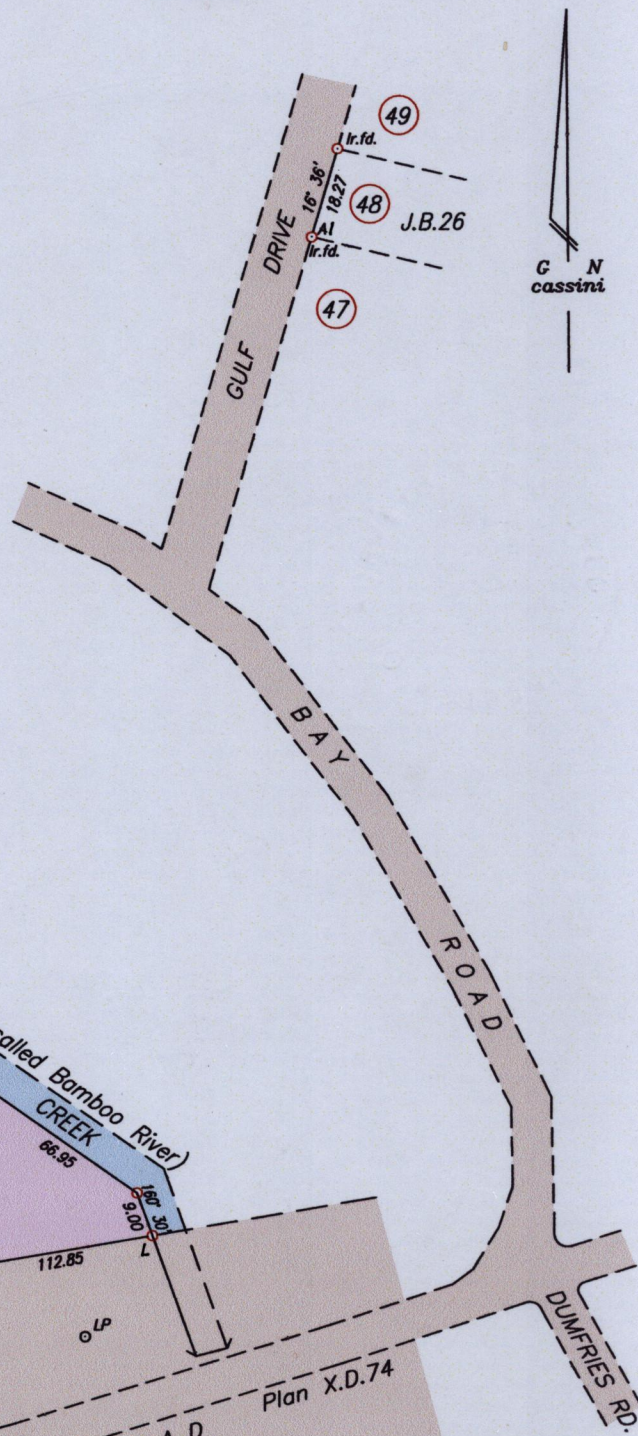
Cadastral Sheet G.3.M. 53E 4/c/13
Ward of Naparima
County of Victoria

Gulf View

process ID# 2000

H Ir.put N 1134090 Nap. 1955 Zone20
E 0666760 +/-5m

Station	Bearing	Distance	Station
A	258° 26'	11.55	B
B	176° 21'	17.98	C
C	226° 39'	8.42	D
D	242° 46'	15.04	E
E	147° 26'	12.05	F
F	199° 24'	8.94	G
G	230° 19'	15.37	H
H	203° 02'	15.29	J
J	173° 15'	8.15	K
L	9° 23'	201.00	AI
L	209° 30'	81.73	IS
H	192° 29'	28.50	EP



Approved *[Signature]*
Director of Surveys

2008-9-15

SCALE 1/1500

Distances are in metres

○ Denotes Ir.put unless otherwise stated
Bearings are Cassini Grid based on Solar Observations

PLAN of a Parcel of land coloured pink in the Ward of Naparima
Containing two thousand nine hundred and fifty five point one square metres
Surveyed by me with due authority on March 17th 2007 for Neil Daram
In accordance with Regulation 25 (1) of the Land Surveyors' Regulations 1998,
I certify that this plan is correct.

Checked by *[Signature]* / 20

Entered on

[Signature]
Trinidad & Tobago Land Surveyor2007