

TO BE BROUGHT UNDER THE PROVISIONS OF  
THE REAL PROPERTY ORDINANCE

U.P.I.N. No.

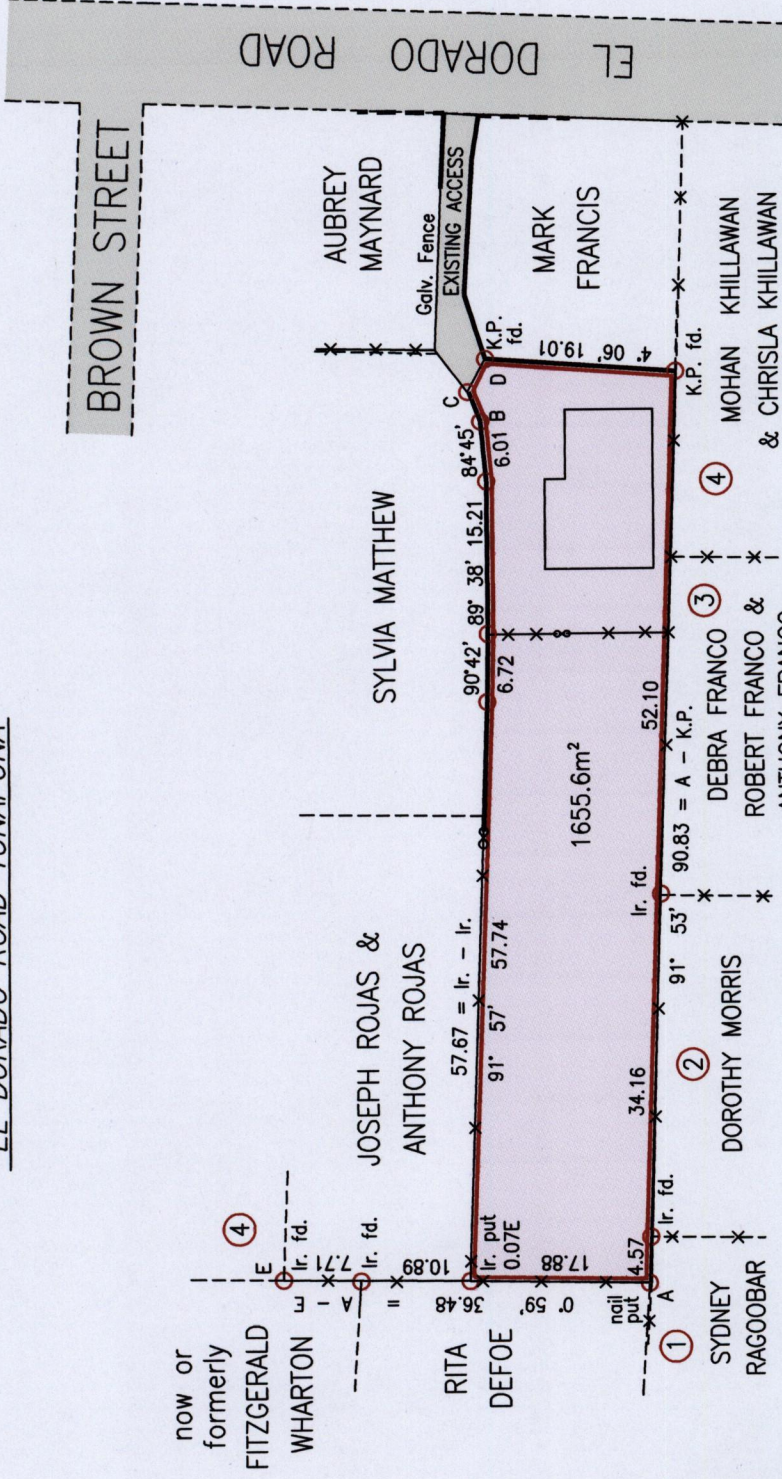
*Process 12/8 2008*

Cadastral Sheet  $\frac{24A}{1/b}$ , B.18.J.

Ward of Tacarigua

County of St. George

"EL DORADO ROAD TUNAPUNA"



Vide
Bk 857:182
Bk 989:146
Bk 1128:193
Plan M.A.2

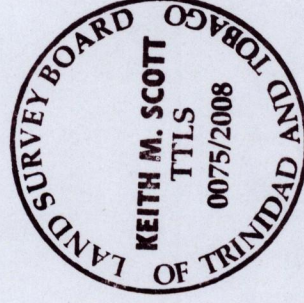
LINE	BEARING	DIST.
B - C	66° 34'	3.20
C - D	118° 38'	3.72

E	676895
A	N 1177876

Reliability Error  $\pm 2.0$  m.  
Coordinates are WGS84,  
UTM Zone 20 based on  
Garmin GPSmap 60CSx  
Handheld GPS Receiver

SCALE 1:750

Distances are in Metres  
Denotes Concrete Brick Wall.  
Denotes chain link wire fence



Approved *Y. M. Kemp*  
Director of Surveys  
2008.8.26

Bearings are Cassini Grid based on Solar Obs.

○ Denotes Iron Put unless otherwise stated

Plan of a Parcel of land coloured pink in the Ward of Tacarigua

Containing one thousand six hundred and fifty five point six square metres

Surveyed by me, with due authority, on 6th May 2008 for Patricia Layne

In accordance with Regulation 25(1) of the Land Surveyors' Regulations 1998,

I certify that this plan is correct.

Checked by *Heidi* 16/8/08

Entered on .....

Trinidad & Tobago Land Surveyor ..... 8<sup>th</sup> July ..... 2008

177

1335

Grid North  
Cassini