

process # 80065

To be brought under the Provisions of the

Real Property Ordinance

Vide Bk. 932 fol. 71

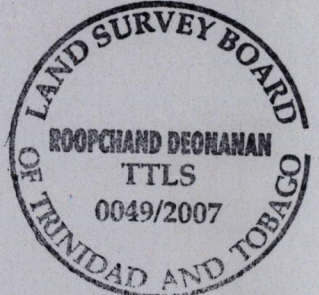
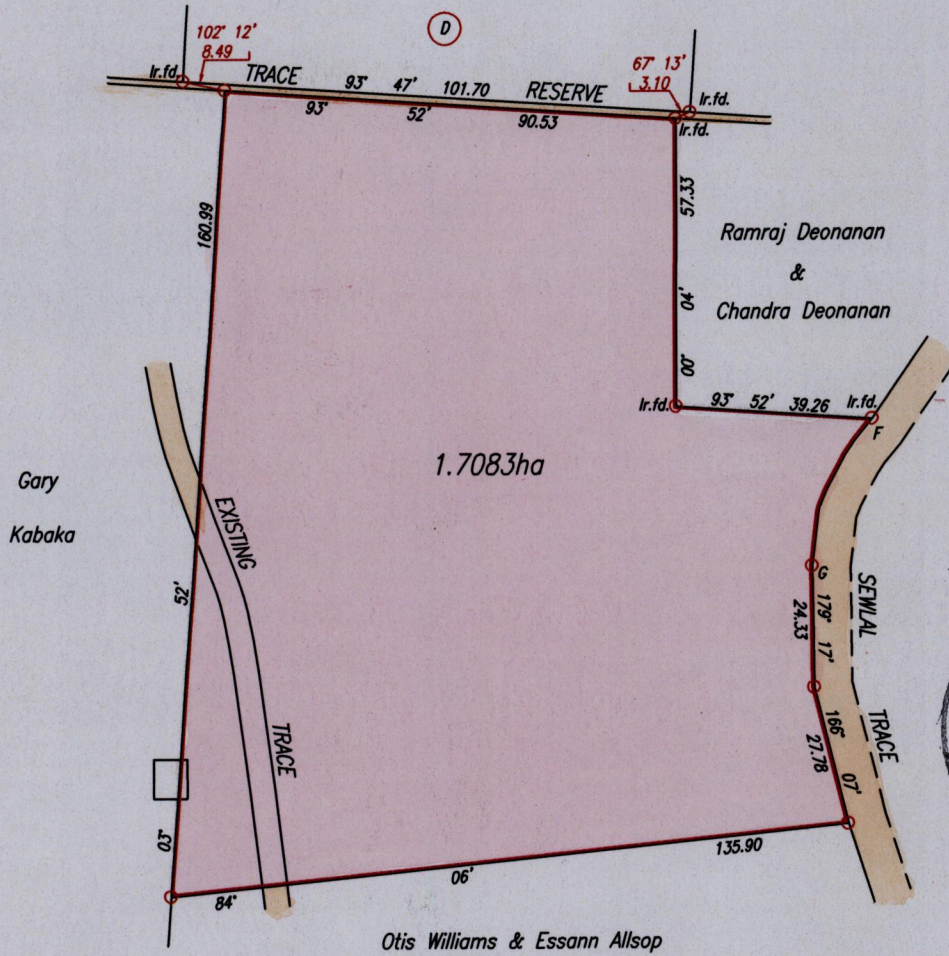
Vide Plan K.E. 16

Cadastral Sheet G.11.D. 63D

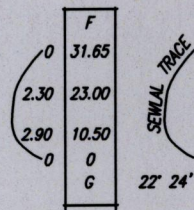
Ward of Siparia

County of St. Patrick.

Fyzabad



Ir.f.d. F 659062mE , 1126843mN  
U.T.M. 20 WGS 84 (+/- 5.0m)



Approved *[Signature]*  
Director of Surveys 2008.7.9

SCALE 1:1500

Distances are in Metres

Coordinates obtained from hand held G.P.S.

○ Denotes Iron put except otherwise stated.

Bearings are Cassini Grid based on Solar Observations.

PLAN of a Parcel of land coloured pink in the Ward of Siparia

Containing one point seven zero eight three hectares.

Surveyed by me, with due authority, on 3rd. December, 2007 for Gajadhar Samaroo Singh

In accordance with Regulation 25(1) of the Land Surveyors' Regulations 1998,

I certify that this plan is correct.

Checked by *[Signature]* 8/2/08 *[Signature]*

Entered . . . . . Trinidad & Tobago Land Surveyor . . . . . 14<sup>th</sup> December . . . . . 2007  
PATH = EV700 D:\Drawings07\Samaroo.dwg.