

1385

151

U.P.R.N No.....

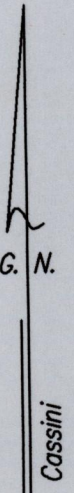
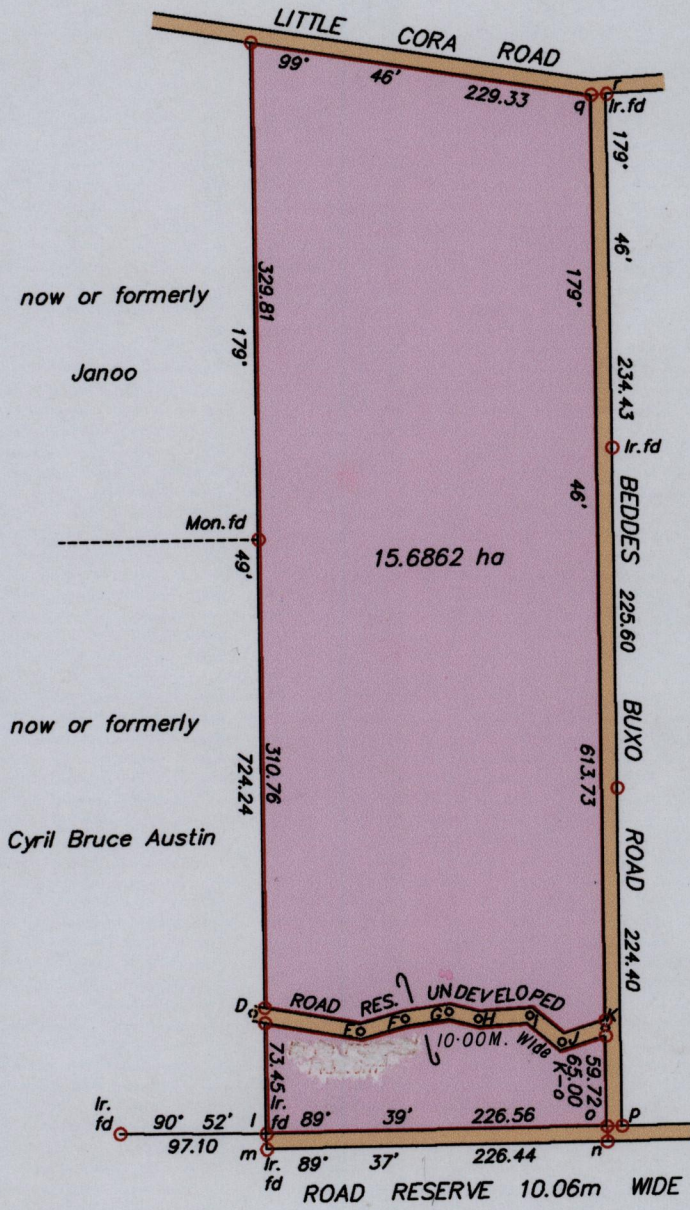
Cadastral Sheet (E.1.K) 25E
4/c

procession # 79991

Ward of Turure

To be brought under the provisions of the
Real Property Ordinance

County of St. Andrew

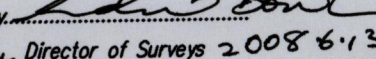


STA.	BEARING.	DIST.
D-E	100° 34'	72.72
E-F	74° 48'	30.86
F-G	82° 02'	29.59
G-H	104° 47'	20.07
H-I	86° 53'	34.32
I-J	130° 56'	27.86
J-K	72° 46'	30.09
I-m	179° 06'	10.20
o-n	179° 46'	10.06
o-p	89° 46'	10.06
q-r	87° 11'	10.21

SEE BK. 859 FOL.237
Survey Order # 31/53
E.G. 115

SCALE 1/5000

Distances are in metres

Approved by 
Director of Surveys 2008 6.13

Denotes Iron put unless otherwise stated

Bearings are Cassini Grid based on Solar Observations

Note to obtain compass bearings add/subtract minutes

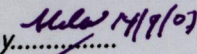
Plan of a Parcel of land coloured pink in the Ward of Turure

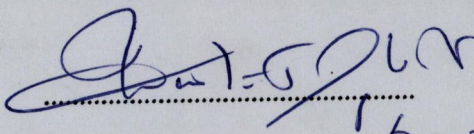
Containing fifteen point six eight six two hectares

Surveyed by me, with due authority, on 10th February 2007 and 4th April 2008 for Arthur Sam

In accordance with Regulation 25 (1) of the Land Surveyors' Regulations 1998,

I certify that this plan is correct.

Checked by  14/8/07


16-09-2007

Entered on..... Trinidad and Tobago Land Surveyor..... 2007

