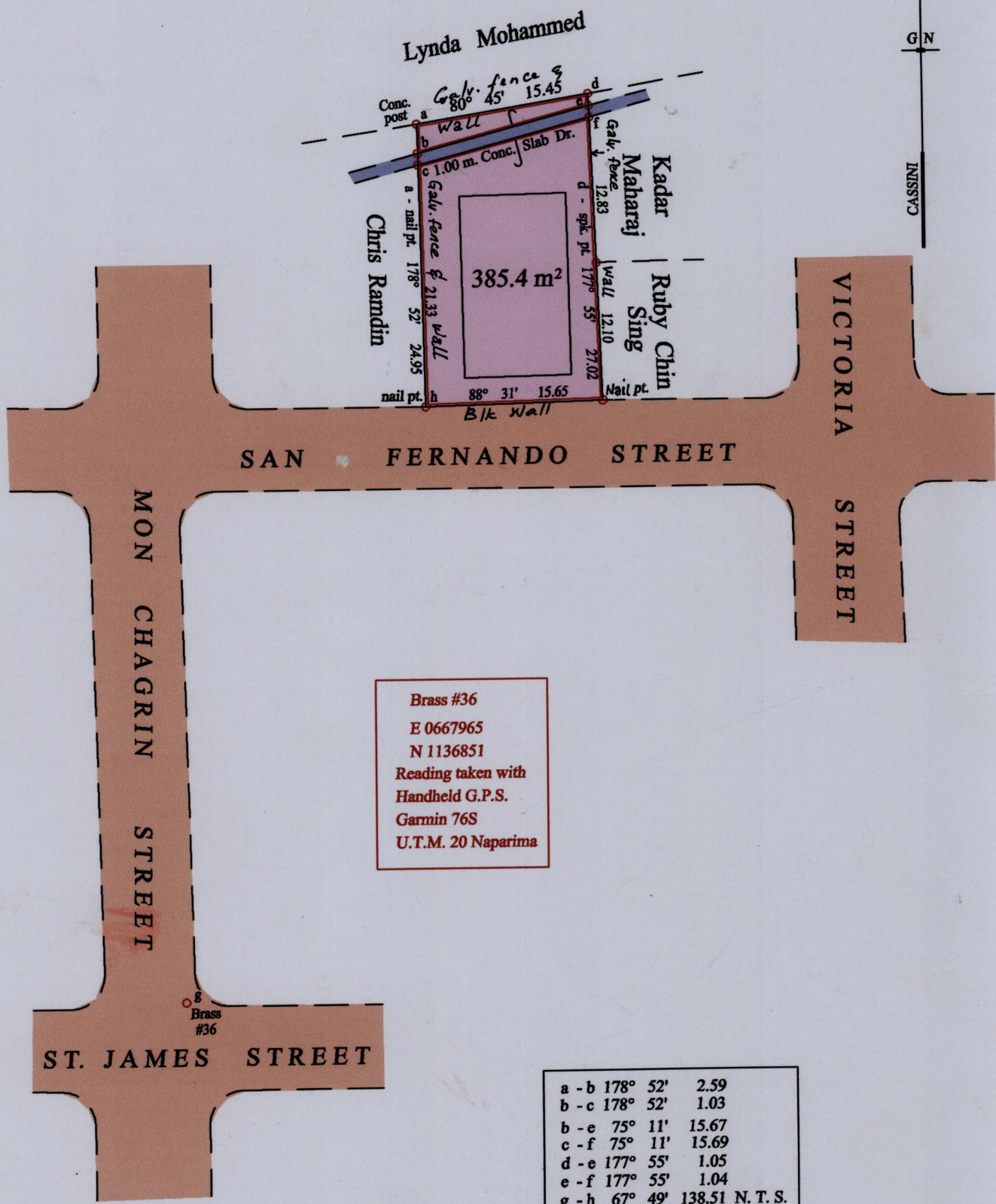


Process ID# 1980



Brass #36  
 E 0667965  
 N 1136851  
 Reading taken with  
 Handheld G.P.S.  
 Garmin 76S  
 U.T.M. 20 Naparima

a - b	178° 52'	2.59
b - c	178° 52'	1.03
b - e	75° 11'	15.67
c - f	75° 11'	15.69
d - e	177° 55'	1.05
e - f	177° 55'	1.04
g - h	67° 49'	138.51 N. T. S.

Approved Director of Surveys 2008.6.5

○ Denotes Iron put except stated otherwise, no mark put at stations c, b, e & f. SCALE : 1:500  
 Note: Bearings are cassini grid based on solar observations Distances are in metres  
 PLAN of a Parcel of land coloured pink in the City of San Fernando  
 Containing three hundred eighty five point four square metres  
 Surveyed by me, with due authority, on the 3rd. August 2007 for Jennifer Scott  
 In accordance with Regulation 25 (1) of the Land Surveyors' Regulations 1998,  
 I certify that this plan is correct.

Checked by 16.5.08  
 Entered on ..... Trinidad & Tobago Land Surveyor ..... 15.11.2007

