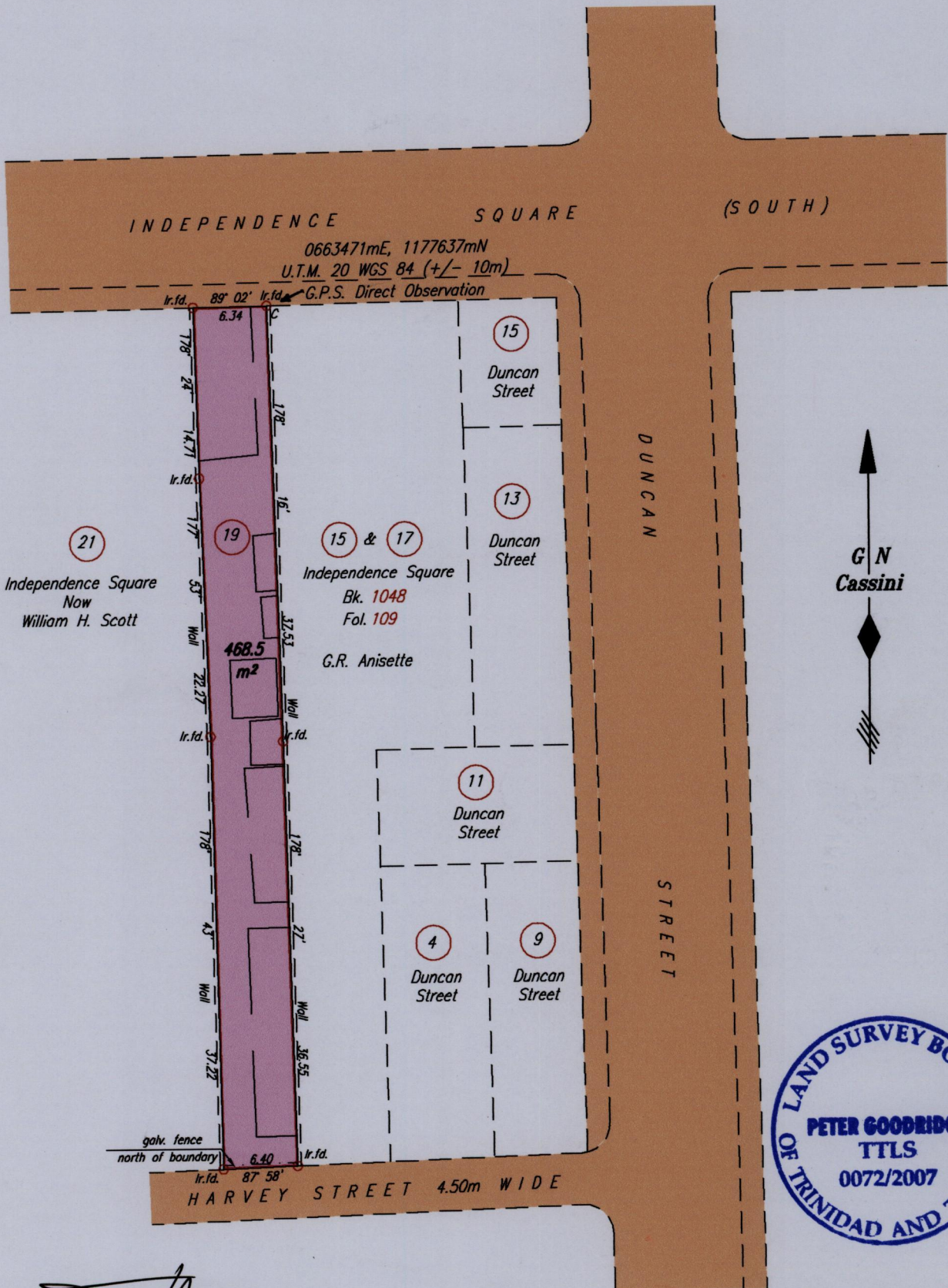


1385 1385

PROCESS ID# 7927

To be brought under the provisions of the Real Property Ordinance



Approved
[Signature]
 Director of Surveys
 2008-4-24

SCALE 1:500

Distances are in METRES

○ Denotes Iron put except where otherwise stated

Bearings are Cassini Grid based on Solar Observations

PLAN of a Parcel of land coloured pink in the City of Port-of-Spain

Containing four hundred and sixty eight point five square metres

Surveyed by me, with due authority, on the 10th December 2004 for Christine Foster

In accordance with Regulation 25 (1) of The Land Surveyors' Regulations 1998,

I certify that this plan is correct.

Checked by *[Signature]*

[Signature] TTLS
 6th August 2007

Entered on