

U.P.R.N.....
To be brought under the provisions
of the REAL PROPERTY ORDINANCE

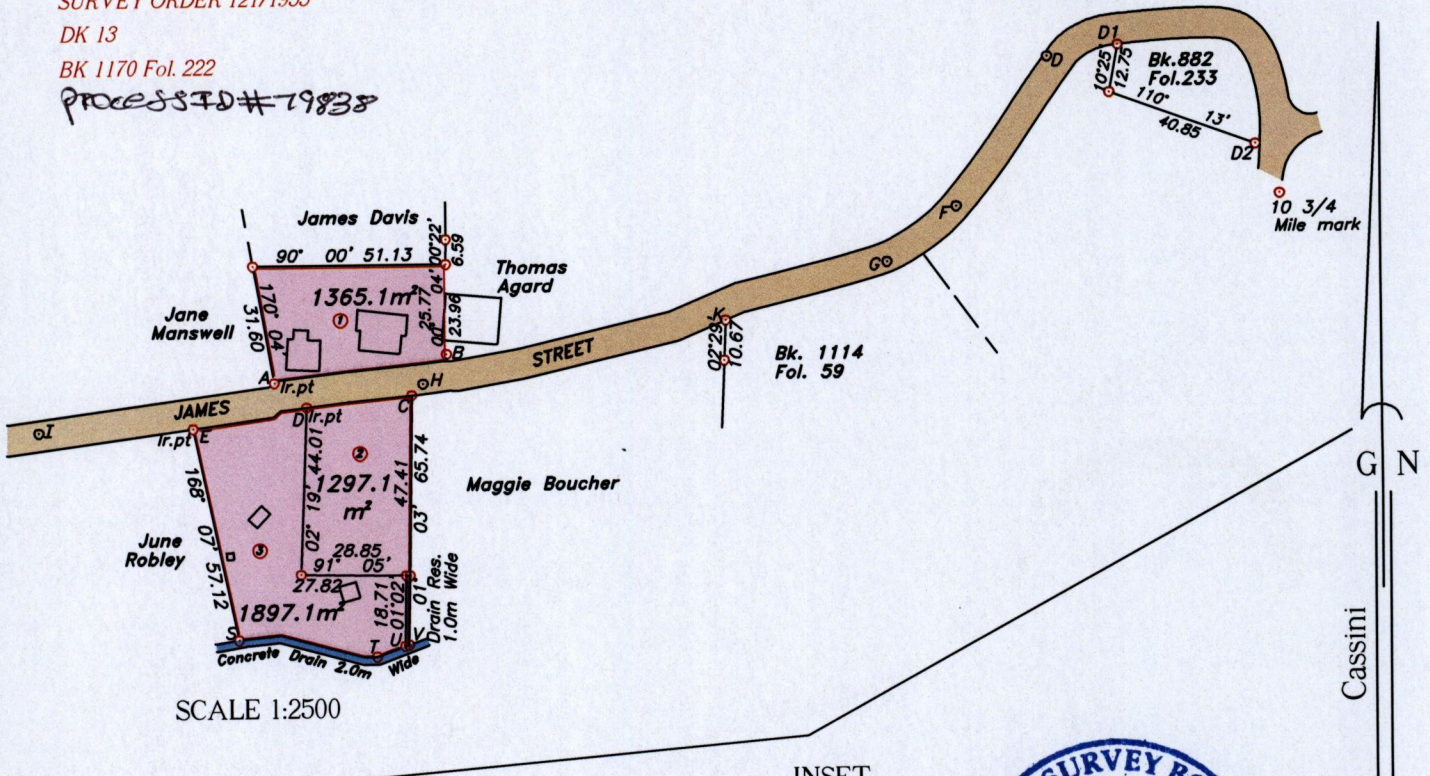
Cadastral Sheet 1.19.E
Ward of Tobago
Parish of St. Mary
GOOD WOOD

SURVEY ORDER 121/1955

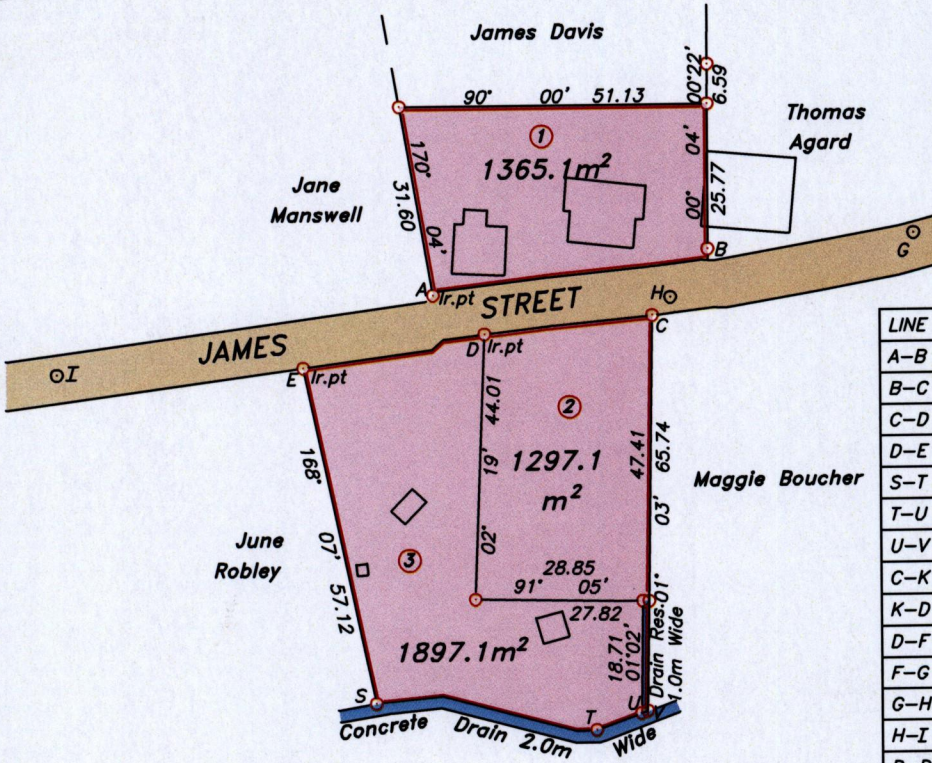
DK 13

BK 1170 Fol. 222

PROCESSED # 79838



INSET



LEGEND

LINE	AZIMUTH	DISTANCE
A-B	81° 05'	46.21
B-C	220° 37'	14.21
C-D	264° 06'	28.05
D-E	260° 01'	30.55
S-T	97° 23'	36.88
T-U	69° 54'	7.93
U-V	70° 12'	1.07
C-K	77° 14'	85.70
K-D	51° 18'	109.70
D-F	211° 50'	45.95
F-G	231° 44'	23.54
G-H	255° 56'	127.28
H-I	263° 19'	102.44
D-D1	80° 58'	18.89
D2-Mile Mark	154° 23'	14.47

Approved

Director of Surveys

2008-3-17

- Denotes iron found, except otherwise stated.
- ⊙ Denotes peg put.

Bearings are grid based on solar observations

Distances are in metres

SCALE 1:1250

PLAN of 3 parcels of land coloured pink in the Ward of Tobago

lot ① 1365.1m², lot ② 1297.1m², lot ③ 1897.1m²

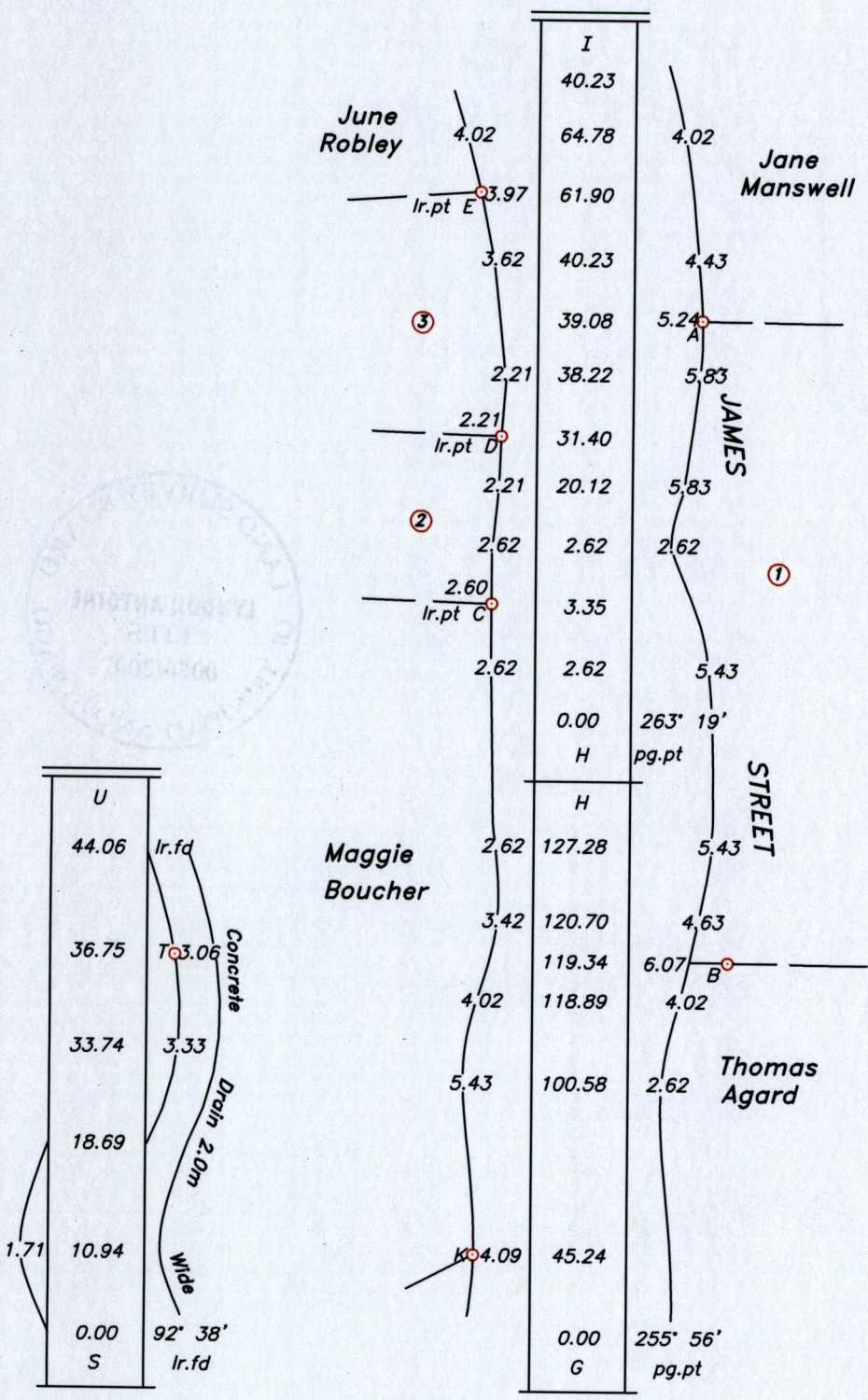
Surveyed by me, with due authority on 9th October 1997 & 26th March 2007 for Dianne Tobias

In accordance with Regulation 25 (1) of the Land Surveyors' Regulations 1998, I certify that this plan is correct.

Checked by.....
Entered

Lyndon Antoine
10th December

Trinidad & Tobago Land Surveyor.....2007.



MINISTRY OF AGRICULTURE
 LAND AND SURVEY
 DIVISION
 25 JAN 2008
 LANDS AND MARINE RESOURCES