

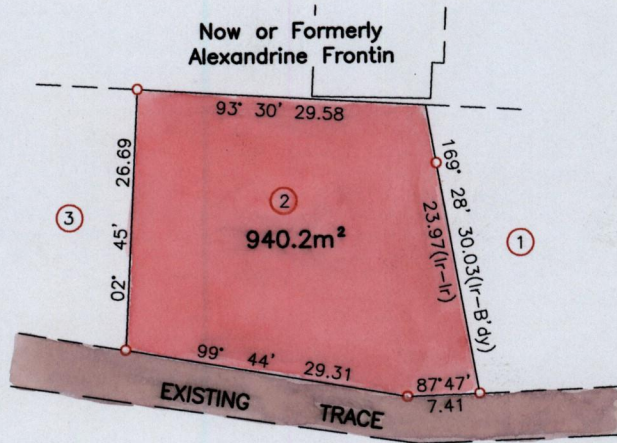
13834

99

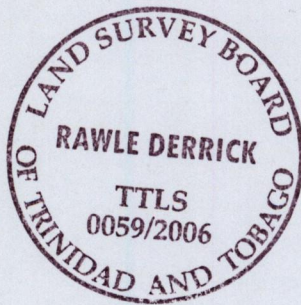
Cadastral Sheet H.10.A, 56E
Ward of Guayaguayare 4/d
County of Mayaro

Process SD#76901

ECCLES VILLAGE



Located
⑩



SCALE 1/750

Distances are in Metres

○ Denotes Iron put except otherwise stated

Bearings are Cassini Grid based on Solar Observations

Plan of a Parcel of land coloured pink in the Ward of Guayaguayare

Containing nine four zero point two square metres

Surveyed by me with due authority, in September 2006 for Llewelyn Warrick

In accordance with Regulation 25 (1) of the Land Surveyors' Regulations 1998,

I certify that this plan is correct.

Entered

..... Rawle Derrick

Trinidad & Tobago Land Surveyor September 20, 2006