

1334

49

R.P.O. Vol. 898 Fol. 199

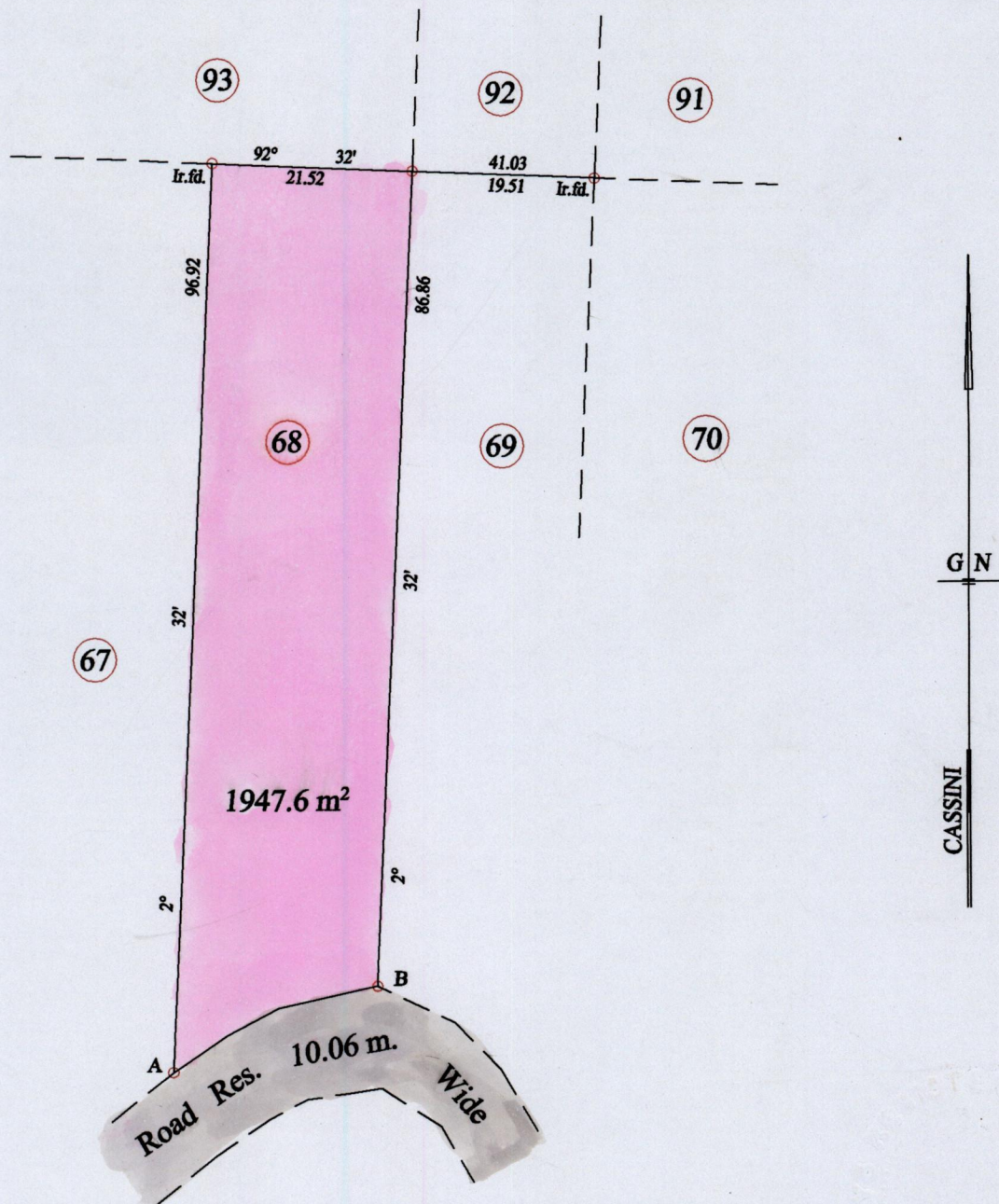
C.T. Vol. Fol.

Process SPH76946

Ward of Guayaguayare

County of Mayaro

Cadastral Sheet (H.15.I) 66.E.
4/b



Located @

A - B 67° 29' 23.76

Approved
Director of Surveys

Vide Plan K. D. 10

o Denotes Iron put except stated otherwise.

SCALE : 1:750

Note: Bearings are cassini grid based on solar observations Distances are in metres

PLAN of a Parcel of land coloured pink in the Ward of Guayaguayare
Containing one thousand nine hundred and forty seven point six square metres
Surveyed by me, with due authority, in October 2005 at the request of Mr. Bobcombe
In accordance with Regulation 25 (1) of the Land Surveyors' Regulations 1998,
I certify that this plan is correct.

Checked by *[Signature]*

Entered on Trinidad & Tobago Land Surveyor 19. 12. 2005

