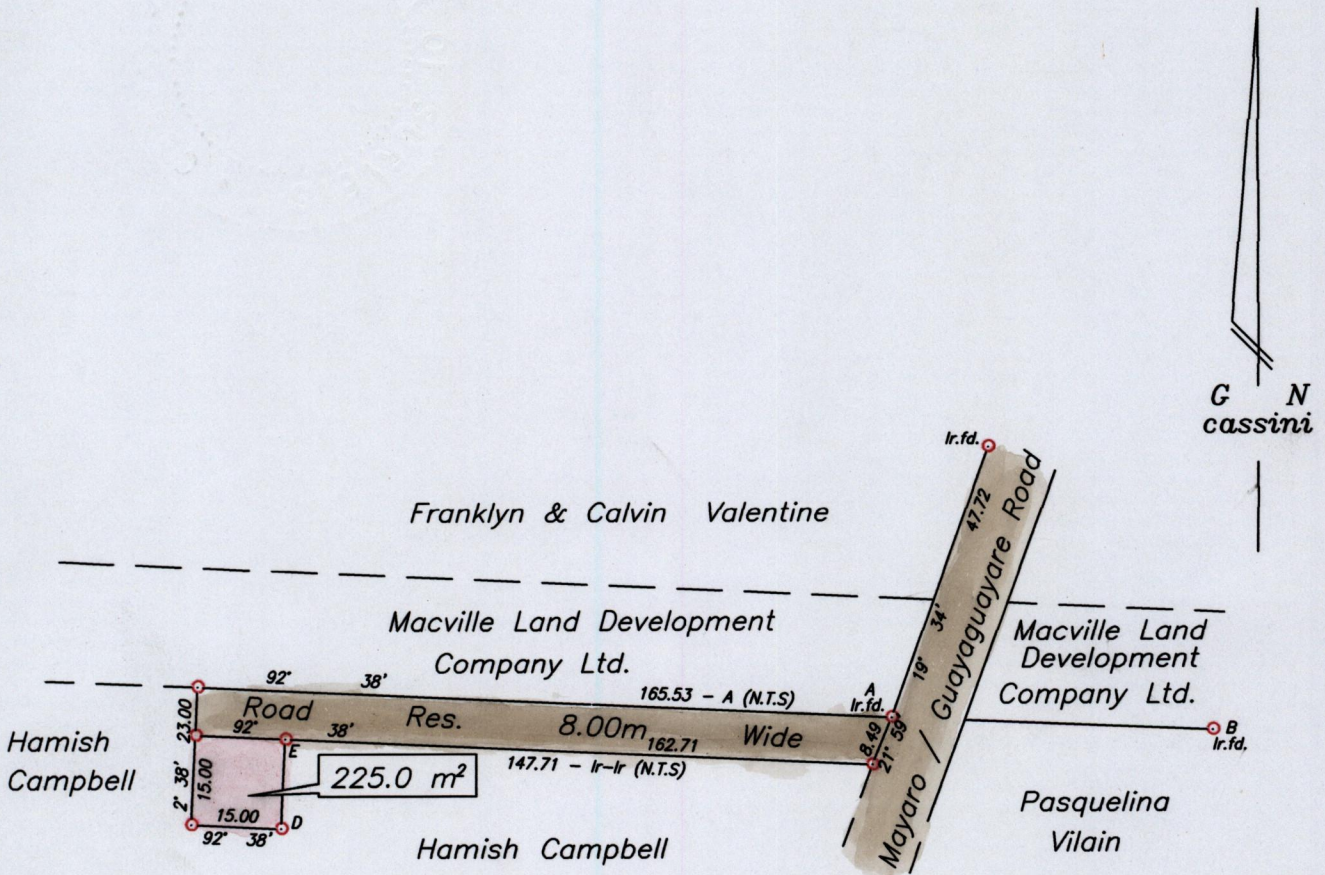


Process ID# 76941

Cadastral Sheet 66B
 2/c, 2/d
 Ward of Guayaguayare
 County of Mayaro



Station	Bearing	Distance	Station
A	92° 21'	77.39	B
D	2° 38'	15.00	E

Located
 (4)

○ Denotes Iron put unless otherwise stated
 Bearings are based on Solar Observations

SCALE 1/1250

Distances are in metres

PLAN of a Parcel of land coloured pink in the Ward of Guayaguayare
 Containing two hundred and twenty five point zero square metres
 Surveyed by me with due authority in Aug. 2005 for Site Acquisition Services Ltd.
 In accordance with Regulation 25 (1) of the Land Surveyors' Regulations 1998,
 I certify that this plan is correct.

Checked by.....

.....
 T.T.L.S

Entered.....

Trinidad & Tobago Land Surveyor 5th September 2005